



# SUMMIT LAKE

CHOICE NEIGHBORHOODS

**People Task Force**  
November 16, 2022

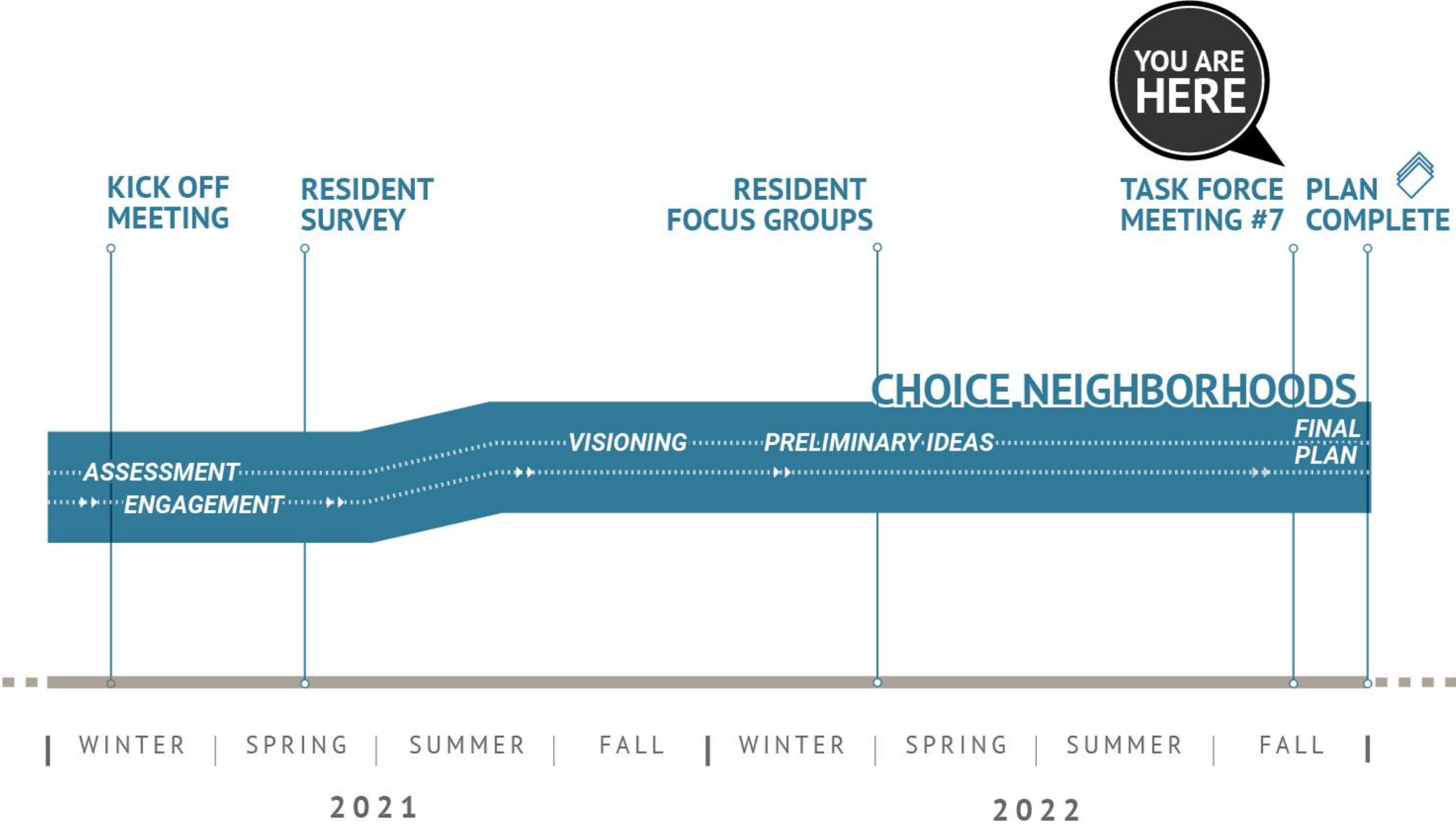


# Welcome!

## Today's Agenda

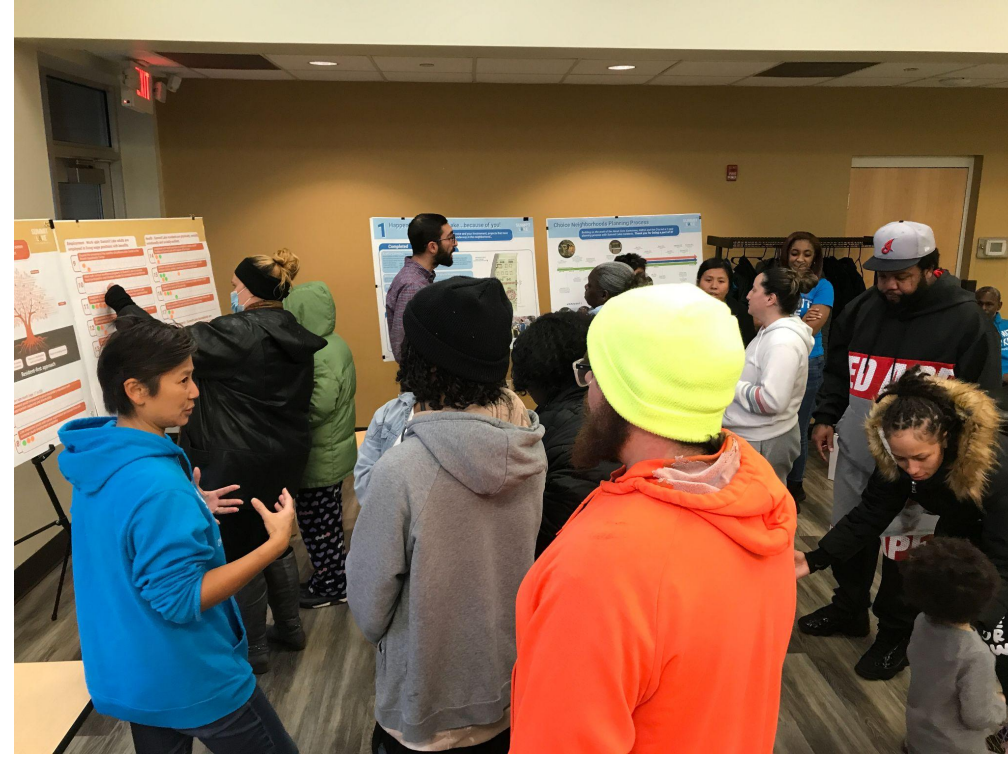
- **Choice Neighborhoods Workshop #6**
- **Final People Plan - Goals + Strategies**
- **Next steps**

# Schedule



# Choice Neighborhoods Workshop #6

We held our last workshop (round 6) on November 15 at the Reach Opportunity Center

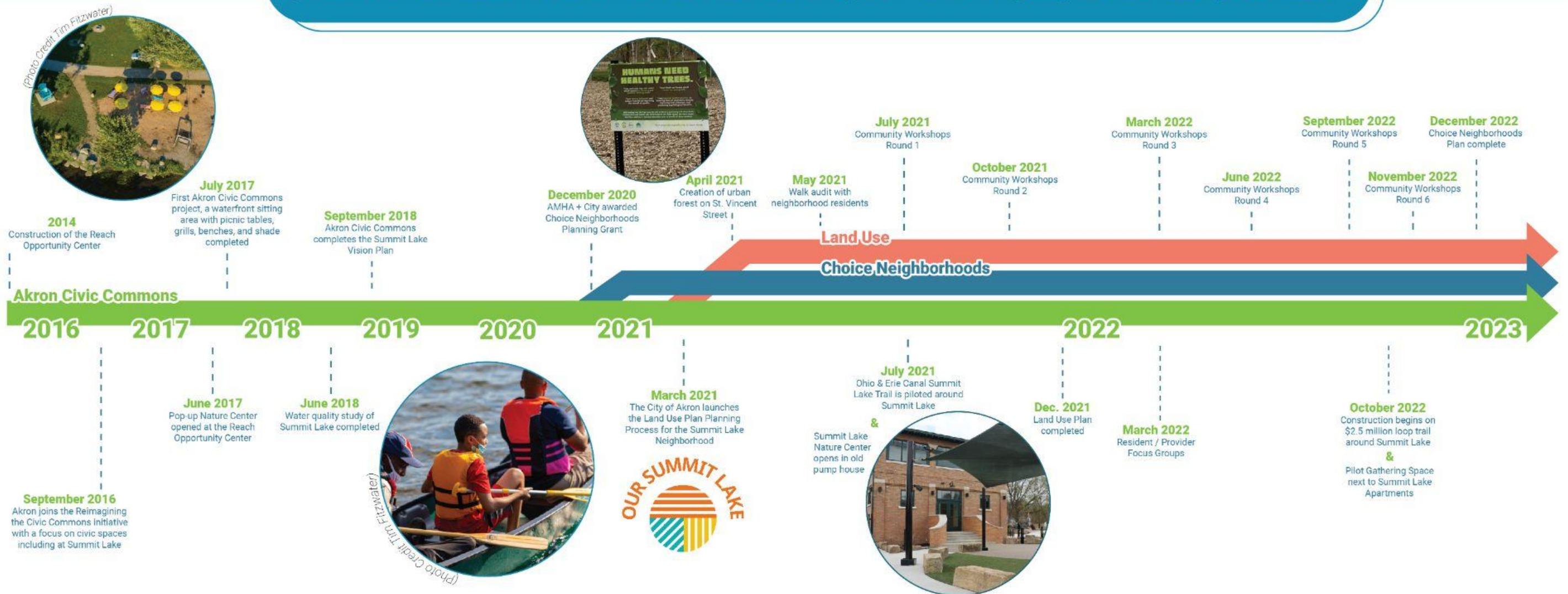


We reviewed the Choice Neighborhoods process in context with the Land Use and Civic Commons work.

# Choice Neighborhoods Planning Process

**SUMMIT LAKE**  
CHOICE NEIGHBORHOODS

*Building on the work of the Akron Civic Commons, AMHA and the City led a 2-year process with Summit Lake residents. Thank you for being a part of this process!*



We updated residents on what the City has been doing in Summit Lake.

# 1 Happenings in Summit Lake...because of you!

Because of your voice and your involvement, projects that have happened or are underway in the neighborhood...

## Completed

**Traffic Calming:** Speed tables were installed on Miller Avenue this past Spring and are being removed for the winter. Did you like the speed tables and do you want them back in the Spring? If yes, tell the City you want them back! **SCAN THIS CODE TO MAKE THE REQUEST:**



**Street Lights:** Broken street lights at the Community Center and along the Towpath Trail were fixed.

**Tree Planting:** Over 300 trees have been planted, making Summit Lake a greener neighborhood.

**Gas Line Improvement:** Gas pipeline replacement work with new sidewalks has been completed throughout the neighborhood.

## Underway

**Neighborhood Clean Up:** The Summit Lake CDC launched a community clean-up program. **GET INVOLVED!**



**Home Improvements:** The Akron Home Repair Program is beginning to work on home repairs. Sixteen homes in Summit Lake have applied for the program.

## Coming Soon

**Gathering Space:** In the next month, a new pilot community space along the lake near the Summit Lake Nature Center and Summit Lake Apartments will be open! You helped design the space in previous workshops, and the pilot will test different elements for the final build next year.

### Pilot Mid-block Greenway:

The City will be implementing a pilot greenway in Spring 2023 to make it easier for pedestrians to get across the neighborhood.

### Mannings Pond Pocket Park:

The City is working with residents near Mannings Pond to create a pocket park.

### North Shore Park:

The design for this space is underway and will be completed early next year. Construction of the park will start next year.

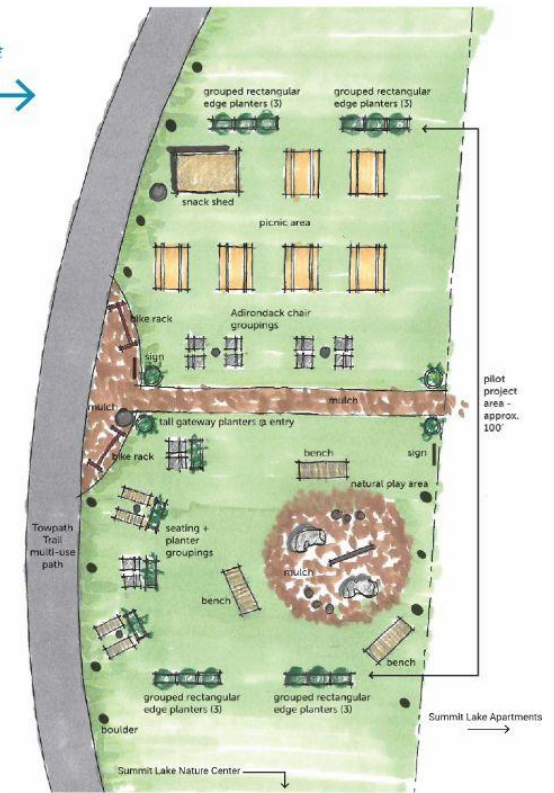
### Ohio & Erie Canal Summit Lake Trail:

Construction on the trail broke ground in October 2022 and is expected to be complete in June 2023.

### Princeton Street Bridge:

City-funded community-requested beautification improvements will be completed by 2024.

GATHERING SPACE PILOT DESIGN



OHIO & ERIE CANAL SUMMIT LAKE TRAIL GROUND BREAKING



# Early action activity - New gathering space

Pilot installation happening now!

With permanent build in 2023



We summarized the People Plan recommendations and asked residents to tell us their priorities.

# 2 People Spotlight

VISION FOR THE FUTURE:

Residents are proud to live in Summit Lake with its strong sense of community and neighbors who look out for one another.

## WHAT ARE YOUR TOP 5 PRIORITIES?

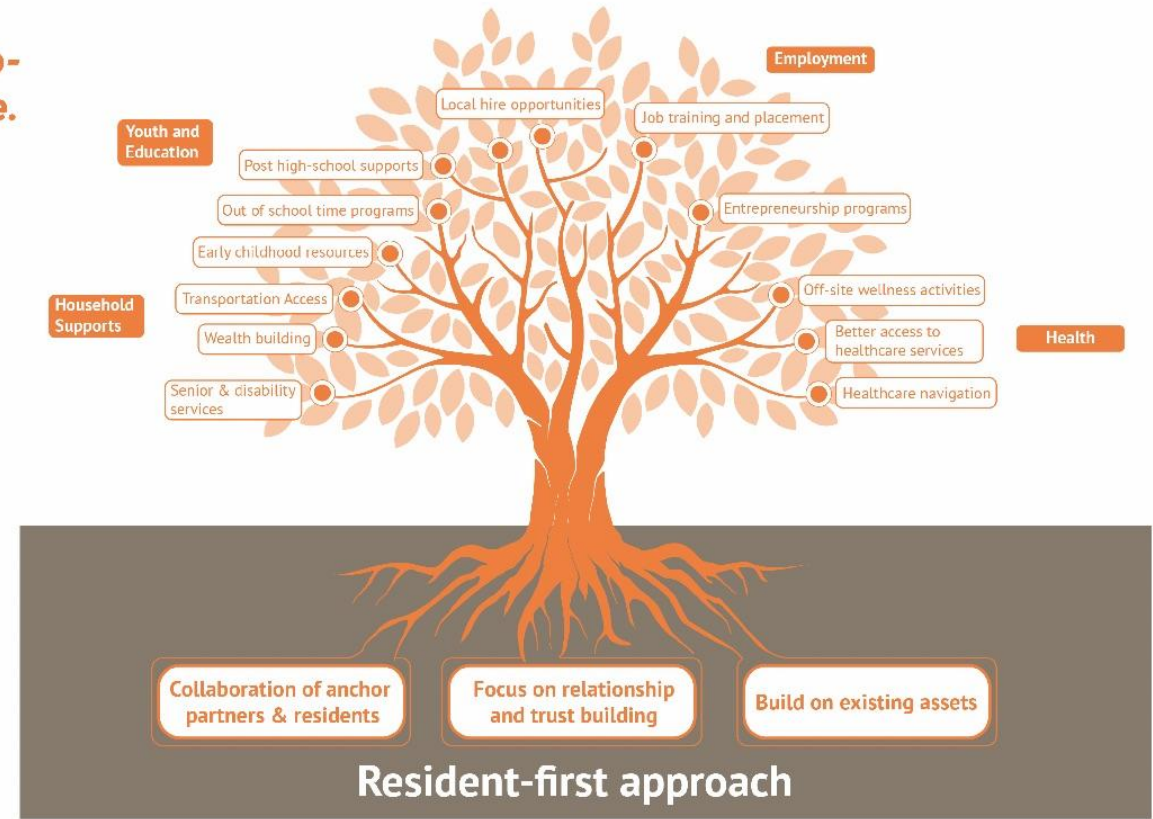
**Education :** Summit Lake youth have access to effective programs and services throughout their educational life course.

### Early childhood (birth to 5)

- 1 Expand the number of local high quality childcare options
- 2 Assist parents with enrolling in childcare programs and applying for childcare subsidies if eligible
- 3 Prioritize admission of local residents to existing early childhood care programs in Summit Lake

### School-age (age 5 to 17)

- 4 Form a teen/tween advisory group to inform out-of-school time program offerings and format
- 5 Leverage existing spaces within Summit Lake to host expanded out-of-school time offerings
- 6 Improve the reach of available transportation options for Summit Lake students



### Transition age youth (age 17 to 22)

- 7 Connect youth interested in post-secondary education with appropriate supports and mentorship
- 8 Link interested youth with career exploration and school-time and summer youth employment programs





# 2 People Spotlight

VISION FOR THE FUTURE: Residents are proud to live in Summit Lake with its strong sense of community and neighbors who look out for one another.

Apartment's ●●●●● Neighborhood/Other ●●●●●

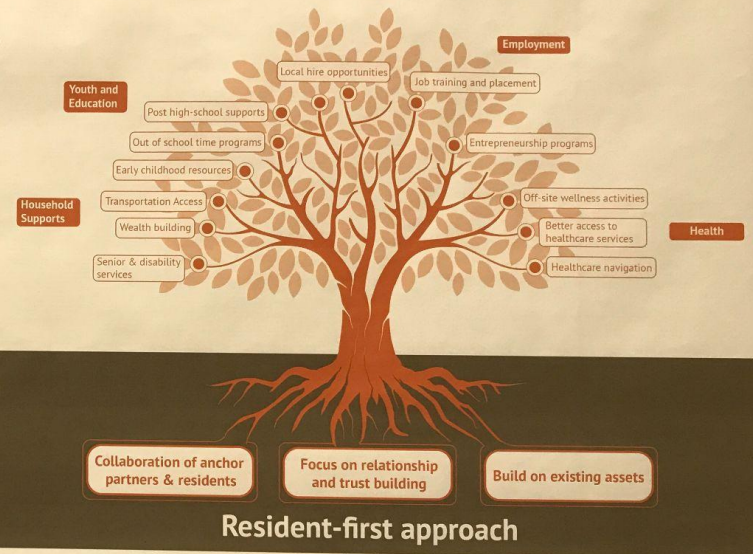


## WHAT ARE YOUR TOP 5 PRIORITIES?

**Education : Summit Lake youth have access to effective programs and services throughout their educational life course.**

- Early childhood (birth to 5)**
- Expand the number of local high quality childcare options
  - Assist parents with enrolling in childcare programs and applying for childcare subsidies if eligible
  - Prioritize admission of local residents to existing early childhood care programs in Summit Lake

- School-age (age 5 to 17)**
- Form a teen/tween advisory group to inform out-of-school time program offerings and format
  - Leverage existing spaces within Summit Lake to host expanded out-of-school time offerings
  - Improve the reach of available transportation options for Summit Lake students



- Transition age youth (age 17 to 22)**
- Connect youth interested in post-secondary education with appropriate supports and mentorship
  - Link interested youth with career exploration and school-time and summer youth employment programs

## Employment : Work-able Summit Lake adults are employed in living wage positions with benefits.

- Expand the presence of the satellite OhioMeansJobs Center at the Reach Opportunity Center
- Work with current workforce programs in Summit Lake to assess local participation and changes needed to increase local enrollment
- Establish a training and employment pipeline for Summit Lake residents focused on anticipated local employment opportunities
- Agreement to prioritize the hiring of local qualified residents for new development in Summit Lake
- Launch a grassroots small business/entrepreneur peer group to nurture and grow informal "side-hustles" into formal businesses

**ANYTHING MISSING?**  
Write it on a sticky note.

*Enter commission w/ residents to help know why they are coming...*

## Health : Summit Lake residents are physically, mentally, emotionally and socially resilient.

- Collaborate with health providers to establish satellite health facilities in Summit Lake with regular office hours
- Connect residents with or bring free/low-cost specialized health services (vision, dental, mammograms) to Summit Lake
- Expand the reach of the current Community Health Worker (CHW) program to serve all households
- Form a resident Community Wellness Committee that directs and helps plan events and activities that happen on-site

## Household supports : Summit Lake households are connected with resources that empower them to thrive.

- Continue working with local organizations to address transportation barriers to services and employment
- Offer wealth-building and financial management workshops and access to safe and affordable banking products and services
- Link seniors and residents with a disability to local resources that specialize in empowering these populations to live independently

We summarized the neighborhood recommendations and asked residents to tell us their priorities.

# 3 Neighborhood Spotlight

VISION FOR THE FUTURE:

Summit Lake is a connected community with quality housing, streets and public spaces that support active and healthy lifestyles as well as protect the natural environment.

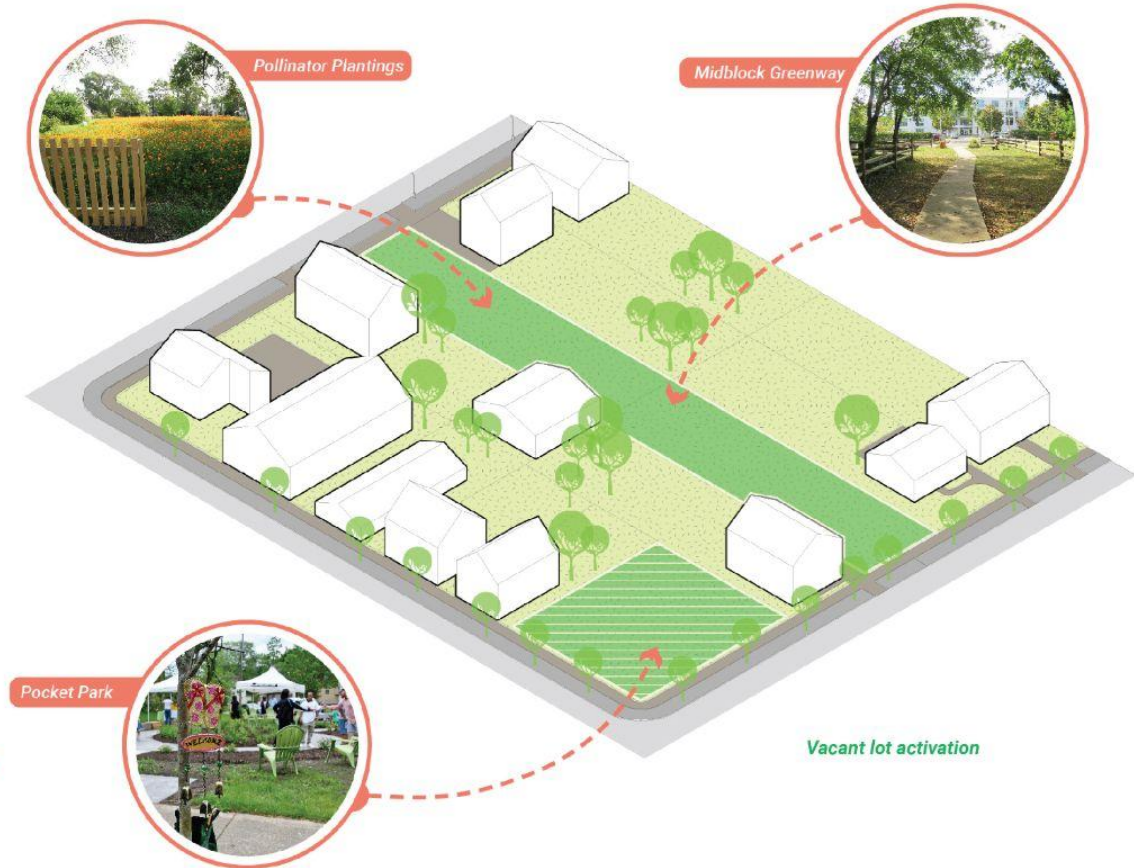
## WHAT ARE YOUR TOP 5 PRIORITIES?

### Tackle quality of life issues in the neighborhood

- 1** Grow the work and activity of the Summit Lake Community Development Corporation
- 2** Support the establishment and growth of small businesses
- 3** Target programs to address nuisance properties
- 4** Activate vacant lots with temporary and permanent uses

### Invest in parks and open spaces designed for the community

- 5** Activate existing parks with year-round programming and events
- 6** Develop new open space away from the lake





# 3 Neighborhood Spotlight

VISION FOR THE FUTURE:

Summit Lake is a connected community with quality housing, streets and public spaces that support active and healthy lifestyles as well as protect the natural environment.

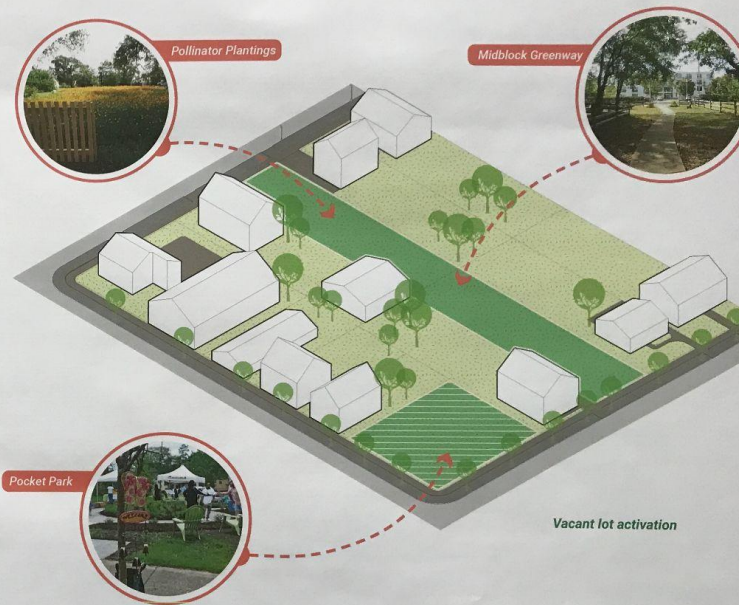
## WHAT ARE YOUR TOP 5 PRIORITIES?

### Tackle quality of life issues in the neighborhood

- 1 Grow the work and activity of the Summit Lake Community Development Corporation
- 2 Support the establishment and growth of small businesses
- 3 Target programs to address nuisance properties
- 4 Activate vacant lots with temporary and permanent uses

### Invest in parks and open spaces designed for the community

- 5 Activate existing parks with year-round programming and events
- 6 Develop new open space away from the lake



Home improvements

Window boxes

Facade Improvement

Porch improvements

Landscaping

Porch Lighting

### Improve and expand the neighborhood housing stock

- 7 Support existing homeowners with home improvements
- 8 Address the quality of existing rental housing stock
- 9 Adopt tools and policies that minimize resident displacement from Summit Lake
- 10 Activate vacant lots with new housing

Ideas for Lake Shore Boulevard improvements

New sidewalks

Green median

Stormwater curb extensions

Street parking

ADA curb ramps

Reach Opportunity Center

Painted crosswalks

Sidewalk painting

### Create safe passageways to neighborhood destinations

- 11 Improve Lake Shore Boulevard to be the front door to the neighborhood
- 12 Make neighborhood streets pedestrian- and bicycle-friendly

Rehab vacant homes

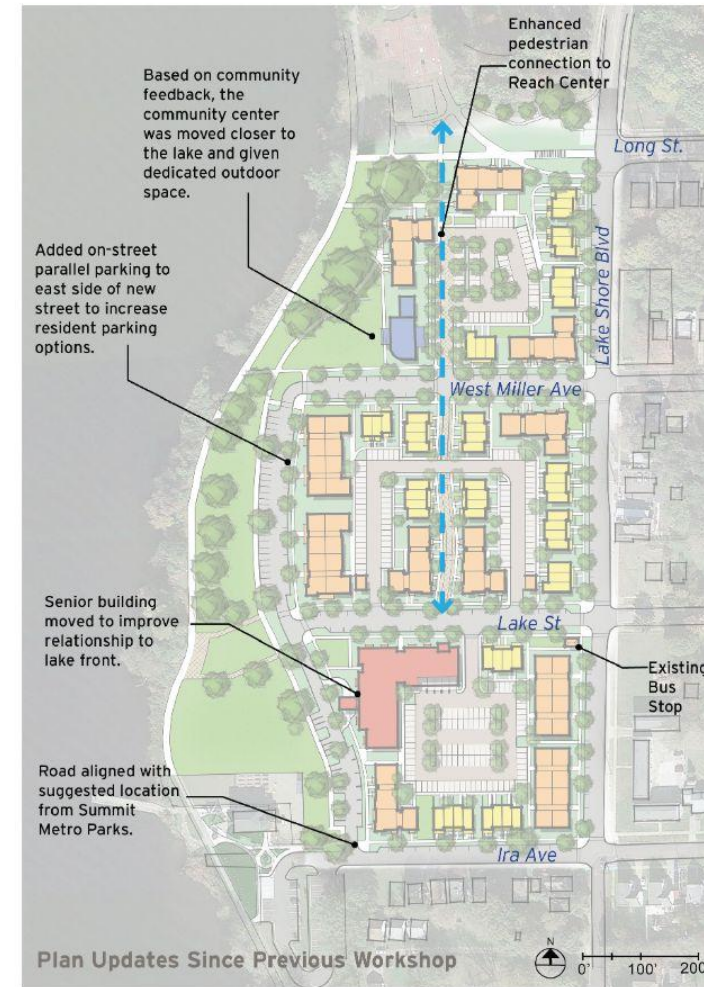
We presented the housing concept for the Summit Lake Apartments.

# 4 Housing Spotlight

VISION FOR THE FUTURE:

Summit Lake Apartments will be redeveloped as a mixed-income community that is integrated into the neighborhood.

## Draft Housing Concept Plan



- Approximately 300 units from one to four bedroom in a variety of building types, including townhomes, walk-up apartment buildings and a senior apartment building
- Keeps the street network that connects the site back to the community.
- Every street will have sidewalks and trees.
- Every intersection will include safe pedestrian crossings.
- All buildings will have doors that face the street to promote resident safety.
- Each residential building will have front and back yards that clearly identify what is private versus public outdoor space
- Residents will be able to park in off-street areas as well as on the street, with over 350 parking spaces across the site.
- A Community Center/event space for resident use is included.
- The site and buildings are designed to maximize accessibility for people with physical disabilities.



November 14th, 2022 | ©2022 Torti Gallas + Partners | 1923 Vermont Avenue, NW, Grimke School, 2nd Floor | Washington, DC 20001 | 301.588.4800



## Housing Type Examples

### Townhomes

- 2 to 3-story units
- Each apartment has a private entrance and porch
- Units can be designed to look like individual units with different fronts
- Can include no-step accessible units on the ground floor with a walk-up flat above



### Walk-Up Apartments

- 3-story building
- Apartments are one-level with units located above one another
- The entrance for each apartment is located off a shared stairway in the middle of the building

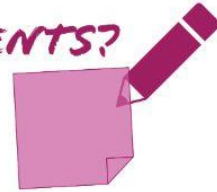


### Senior Apartments

- 3 to 4-story building
- Building will have a lobby plus elevator
- Residents of the building will share common spaces
- The entrance for each apartment is off a hallway accessed by the elevator



COMMENTS?



November 14th, 2022 ©2022 Torti Gallas + Partners | 1923 Vermont Avenue, NW, Grinnell School, 2nd Floor | Washington, DC 20001 | 301.586.4800





We gave residents a preview of next steps for 2023 and provided sign up sheets to get involved.

# 5 Get involved!

With the planning work wrapping up, our focus now turns to implementation and we need your help! Sign up to be a part of making the vision for Summit Lake a reality.

### IMMEDIATE NEXT STEP:

Transformation Plan due December 16, 2022



### HERE'S WHAT IS COMING UP IN 2023:

Finalize housing plan

Secure land in the neighborhood for new housing

Identify and secure funding and partner commitments

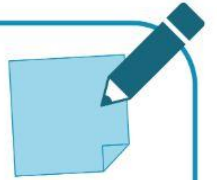
Develop relocation plan

Continue resident engagement

Apply for a Choice Neighborhoods Implementation grant

### QUESTIONS? COMMENTS?

Write it on a sticky note.



### SIGN UP AND STAY INVOLVED!

Add your name to the sign up sheet to stay involved and let us know what you are most interested in working on.



# People Plan - Goals + Strategies

## Overall People Goal:

AMHA and its People partners provide Summit Lake residents the opportunity to connect with the services and programs most important to them using a **resident-first approach**. Under a resident-first approach, Summit Lake **residents work side-by-side** with AMHA and its People Partners to **design, inform and assess** the services and programs available to best meet the community's needs and support households with achieving their personal outcomes.

# How we going to achieve the overall People goal

- **Establish and regularly convene a Summit Lake Anchor Partner Coalition that includes anchor partners and Summit Lake residents. “Anchor” partners are service organizations who:**
  - are open to **changing their approach to service delivery** including piloting new programs in Summit Lake
  - are ready to make a **long-term commitment** to consistent involvement in the community
  - understand that program **participation may take time to grow**
  - are willing to assess and modify their policies and practices to align with being a **trauma-informed and culturally competent** organization
  - are excited about working with AMHA to **chart a new path**

# How we going to achieve the overall People goal

- **Prioritize actions and activities that support relationship and trust building between residents and between residents and service partners, including:**
  - Dedicate a **full-time** AMHA Service Coordinator to Summit Lake
  - Execute **data sharing agreements** with service partners to streamline the collection and sharing of information to reduce resident service fatigue as well as assess impact of services provided
  - Expand the **Resident Ambassador program** and build their capacity to serve as resident liaisons with AMHA and do community building and outreach

# How we going to achieve the overall People goal

- **Capitalize on existing space assets within Summit Lake to offer services and programs that meet residents where they are, including:**
  - Reach Opportunity Center
  - Summit Lake Community Center
  - Summit Lake Nature Center
  - George Sisler Field
  - Community Room at Summit Lake Apartments

# People Plan - Sub Goals + Strategies

**Sub Goal 1 (Education):** Summit Lake youth have access to effective programs and services throughout their educational life course.

- **Early childhood (birth to 5)**
  - Expand the number of local high quality *childcare options* for *working, looking for work, and stay-at home parents*
  - Assist parents with enrolling in appropriate childcare programs and *applying for childcare subsidies* if eligible
  - \*\*\*Work with existing early childhood programs in Summit Lake to *prioritize admission of local residents* for available slots

Key partners: AMHA's Early Childhood Initiative, Community Action Akron Summit, Akron Area YMCA, Akron Public Schools, Ohio Means Jobs, Summit Education Initiative

# People Plan - Sub Goals + Strategies

## Sub Goal 1 (Education): continued

- **School-Age (5 to 17)**
  - \*\*\*Form a *teen/tween advisory group* to inform out-of-school time program offerings and form
  - Leverage *existing spaces within Summit Lake* to host expanded out-of-school time offerings
  - Collaborate with local organizations to maximize the *reach of available transportation options* for Summit Lake students

Key partners: Reach Opportunity Center, Akron Area YMCA, Students With A Goal, Summit Lake Community Center, Summit Lake Build Corps, Summit Lake Nature Center, Akron Public Schools, Summit Education Initiative

# People Plan - Sub Goals + Strategies

## Sub Goal 1 (Education): continued

- **Transition Age Youth (14 to 22)**
  - Connect youth interested in *post-secondary education* with appropriate supports and mentorship
  - \*\*\*Link interested youth with career exploration and school-time and summer *youth employment programs*

Key partners: AMHA JobsPlus Program, OhioMeansJobs, Akron Public Schools, Stark State College, Summit Lake Build Corps



# People Plan - Sub Goals + Strategies

**Sub Goal 2 (Employment):** Work-able Summit Lake adults are employed in living wage positions with benefits.

- Expand the *satellite OhioMeansJobs Center* at the Reach Opportunity Center
- Work with current workforce programs in Summit Lake to *assess local participation* and changes needed to increase local enrollment
- \*\*\*Establish a *training and employment pipeline* for Summit Lake residents focused on anticipated local employment opportunities like the redevelopment of Summit Lake Apartments, construction of the North Shore, and future new housing in the neighborhood

# People Plan - Sub Goals + Strategies

## Sub Goal 2 (Employment): continued

- Execute a community benefits agreement with the organizations carrying out new development activity in Summit Lake with commitments to *prioritizing the hiring of local qualified residents*
- Launch a grassroots *small business/entrepreneur peer group* to nurture and grow “side-hustles” into formal businesses

Key partners: AMHA JobsPlus Program, OhioMeansJobs, Project LEARN, Goodwill Akron, The Michaels Organization, Bounce, Akron-Summit County Public Library

# People Plan - Sub Goals + Strategies

**Sub Goal 3 (Health):** Summit Lake residents are physically, mentally, emotionally and socially resilient.

- Establish a *satellite health facility* in Summit Lake
- \*\*\*Connect residents with or bring free/low-cost specialized health services (*vision, dental, mammograms*) to Summit Lake
- Expand the reach of the current *Community Health Worker* (CHW) program to serve all households
- Form a *resident Community Wellness Committee* that directs and helps plan events and activities that happen on-site

Key partners: AMHA Resident Services Department, Cleveland Clinic/Akron General Hospital, Akron Children's Hospital, Minority Behavioral Health Group, Portage Path Behavioral Health, Summit County Public Health, Summit MetroParks

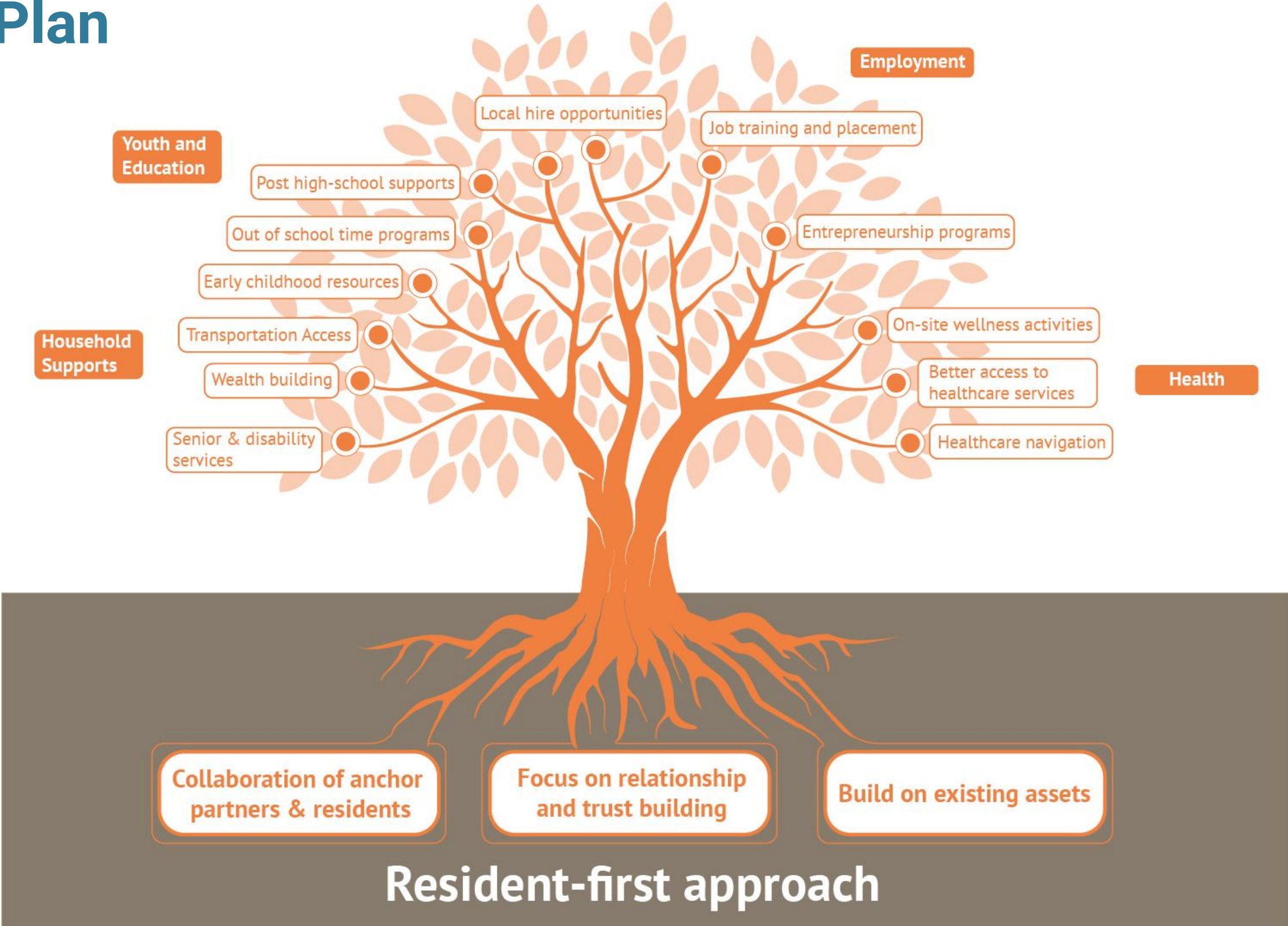
# People Plan - Sub Goals + Strategies

**Sub Goal 4 (Household Supports):** Summit Lake households are connected with resources that empower them to thrive.

- \*\*\*Continue working with local organizations to *address transportation barriers* to service and employment
- Offer *wealth-building and financial management* workshops including access to safe and affordable banking products
- Link *seniors and residents with a disability* to local resources that specialize in empowering these populations to live independently

Key partners: AMHA Resident Services Department, Goodwill Akron, Akron Public Schools, United Way of Summit & Medina, Direction Home

# People Plan



# Next Steps

- **Final Transformation Plan - due December 16**
- **Move toward implementation in 2023**
  - Convene the Anchor Partner Coalition and establish shared goals and timelines, organizational commitments and data sharing agreements
  - Recruit and engage Summit Lake residents for the Anchor Partner Coalition, Resident Ambassador program, teen/tween advisory group and Community Wellness Committee
  - Commit to implementing one activity within each sub area during the year
  - Apply for Choice Neighborhoods Implementation funding

