

SUMMIT LAKE

CHOICE NEIGHBORHOODS

People Task Force

May 19, 2021



Image courtesy of Tim Fitzwater



DANIEL HORRIGAN, MAYOR



Welcome!

Today's Agenda

- Welcome and Introductions
- Assessment of Neighborhood Conditions
- Summit Lake Apartments Resident Survey
- Neighborhood Survey
- Service Partner Interviews
- Resident interviews
- Next Steps

Choice Activities to Date

- Assessment of neighborhood conditions in April
- Launch of People’s History of Summit Lake
- Launch of Summit Lake Apartments survey - Neighborhood survey coming soon
- Interviews with residents and service providers

A PEOPLE'S HISTORY OF SUMMIT LAKE

The City of Akron is embarking on a resident-led process to determine how to use **city-owned vacant land** in Summit Lake. At the same time, the Akron Metropolitan Housing Authority and the City are beginning a resident-led planning process that looks at **the whole neighborhood** and **the needs of neighborhood residents** by identifying areas for improvement and investment, like housing, businesses, parks, streets, services, and safety.

These plans are a chance for you to write your own story for the future but we also want to hear your stories about Summit Lake yesterday and today. We need **YOU** to create a **personal history of the neighborhood**.

Let's go back in time together to visit _____'s
 _____ [your name]
 Summit Lake. Here's something to get you started or feel free to turn
 the card over and share whatever you want.

THE PAST

"I remember back in _____ [year]

 was _____ [adjective/description]
 _____ [activity]
 _____ [place/street intersection]
 that time is _____

SUMMIT LAKE CHOICE NEIGHBORHOODS **SUMMIT LAKE APARTMENTS RESIDENT SURVEY**

INTRODUCTION


The Akron Metropolitan Housing Authority (AMHA) and the City of Akron are starting a process to find out what improvements residents want for Summit Lake and the Apartments. We need your help to get started. We want to hear what changes YOU would like to see.

Please complete this survey. The survey should take no longer than 20 to 30 minutes to complete. As a thank you for your time, you will receive a \$10 Walmart and a \$10 Visa gift card courtesy of Akron Civic Commons and AMHA.

It is your choice to complete in this survey. **Your answers are confidential and individual answers will not be shared with AMHA or the City – they will only receive a summary of the answers received. Your answers or decision to complete the survey will NOT impact your housing at Summit Lake Apartments.**

If you have any questions about this survey, please call (330) 252-9263 or send an email to ChoiceNeighborhoods@AkronHousing.org. AMHA and the City will also be holding virtual and in-person meetings and workshops, so please attend and get involved!

Thank you for your time today.



Map of Summit Lake Neighborhood

Legend:

- Choice Neighborhoods Study Area
- Summit Lake Apartments
- Lake/Water Front
- Parks/Open Space
- Existing Traps/Trail
- Proposed Summit Lake Trail
- Railroad

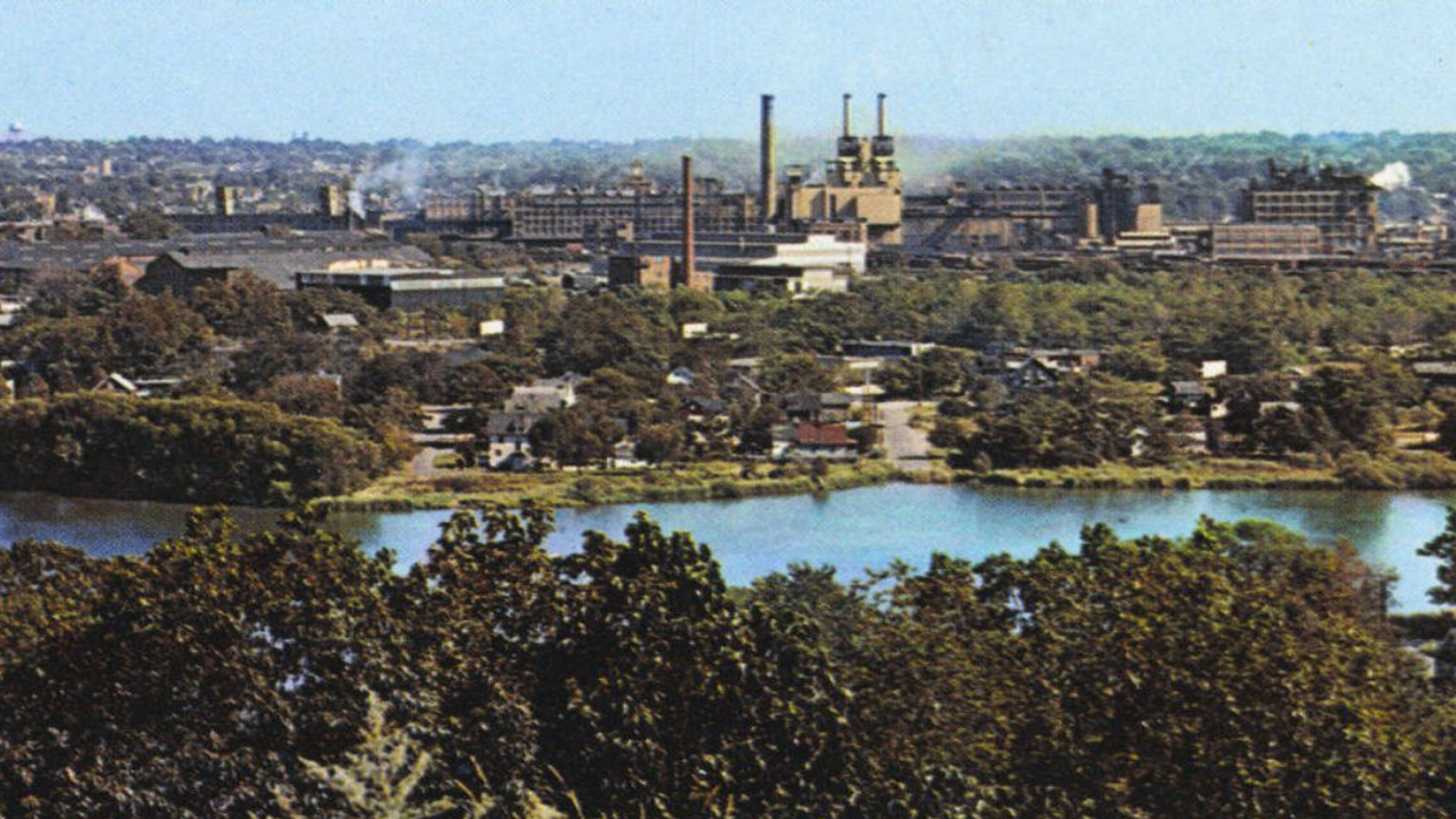
AMHA AKRON CIVIC COMMONS

Summit Lake today is an asset but it wasn't always

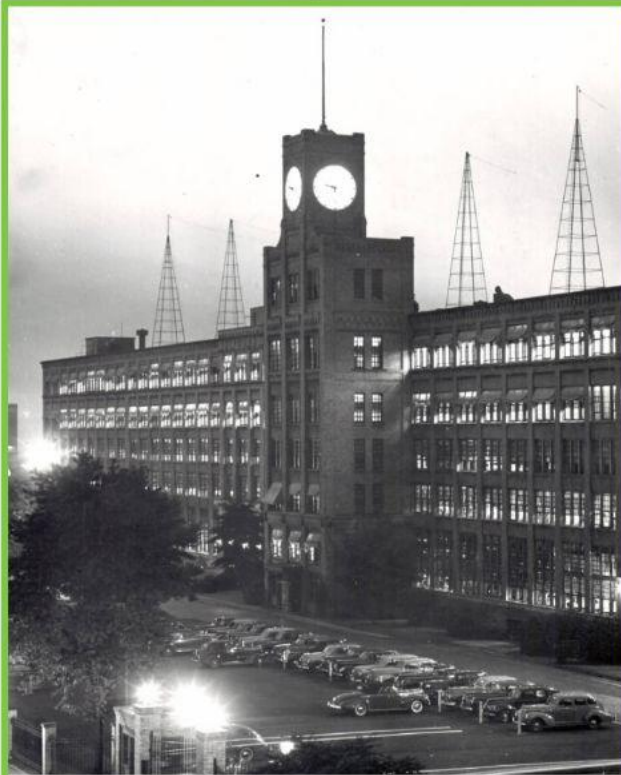




SUMMIT LAKE.



Industry brought growth but also pollution to Summit Lake



EARLY 1900s

The Big Four rubber and tire companies brought jobs and growth to the area.

They drew water from Summit Lake for industrial use, but also dumped effluent into the lake.



1917-1958

Summit Beach Park was Akron's "Million Dollar Playground", and featured the country's largest funhouse as well as its largest mosaic pool. The amusement park attracted huge numbers of pleasure-seekers in its hey day.

But while they frolicked on the shores, the lake waters were considered unsafe and remained so until a 2017 assessment found the water to be safe for recreational activities.



Over time, the loss of industry, highway construction and urban renewal contributed to the neighborhood's decline



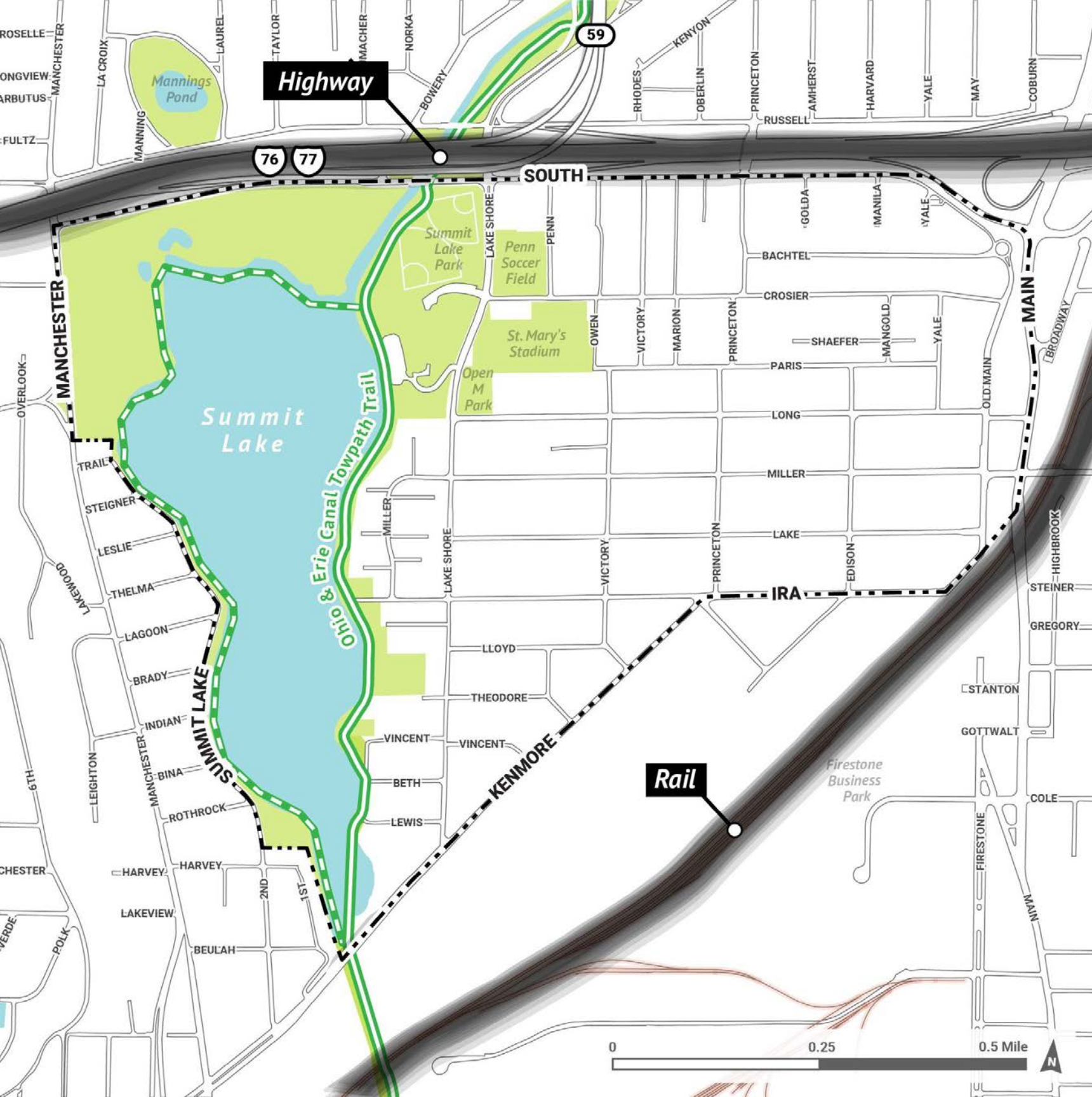
1960s

Highway construction split the Summit Lake neighborhood in two and displaced hundreds of households. The highway also cut the southern portion of Summit Lake off from the rest of the city.









1970s

The Big Four companies began closing down or relocating plants, resulting in mass job loss for Summit Lake residents.



The neighborhood is isolated from the rest of the city

Neighborhood Barriers

-  Choice Study Area
-  Lake/River/Pond
-  Parks/Open Space
-  Existing Towpath Trail
-  Proposed Summit Lake Trail
-  Railroad

But it's also a tight-knit community

We are filling out our understanding of the neighborhood through

interviews

&

personal histories

"IT'S A SAFE PLACE. THAT'S GONE FROM A LOT OF NEIGHBORHOODS - KIDS BEING ABLE TO GO TO YOUR NEIGHBORS FOR HELP."

"IT'S SMALL ENOUGH HERE, I KNOW WHO THE KIDS BELONG TO, I DO LIKE THAT."

"WHEN I MOVED HERE, THIS WAS A NEIGHBORHOOD, STREETS WERE FILLED WITH HOMES, CHILDREN, SCHOOLS, NOW WE JUST SEE BUSES, EVERYTHING IS OUTSIDE."

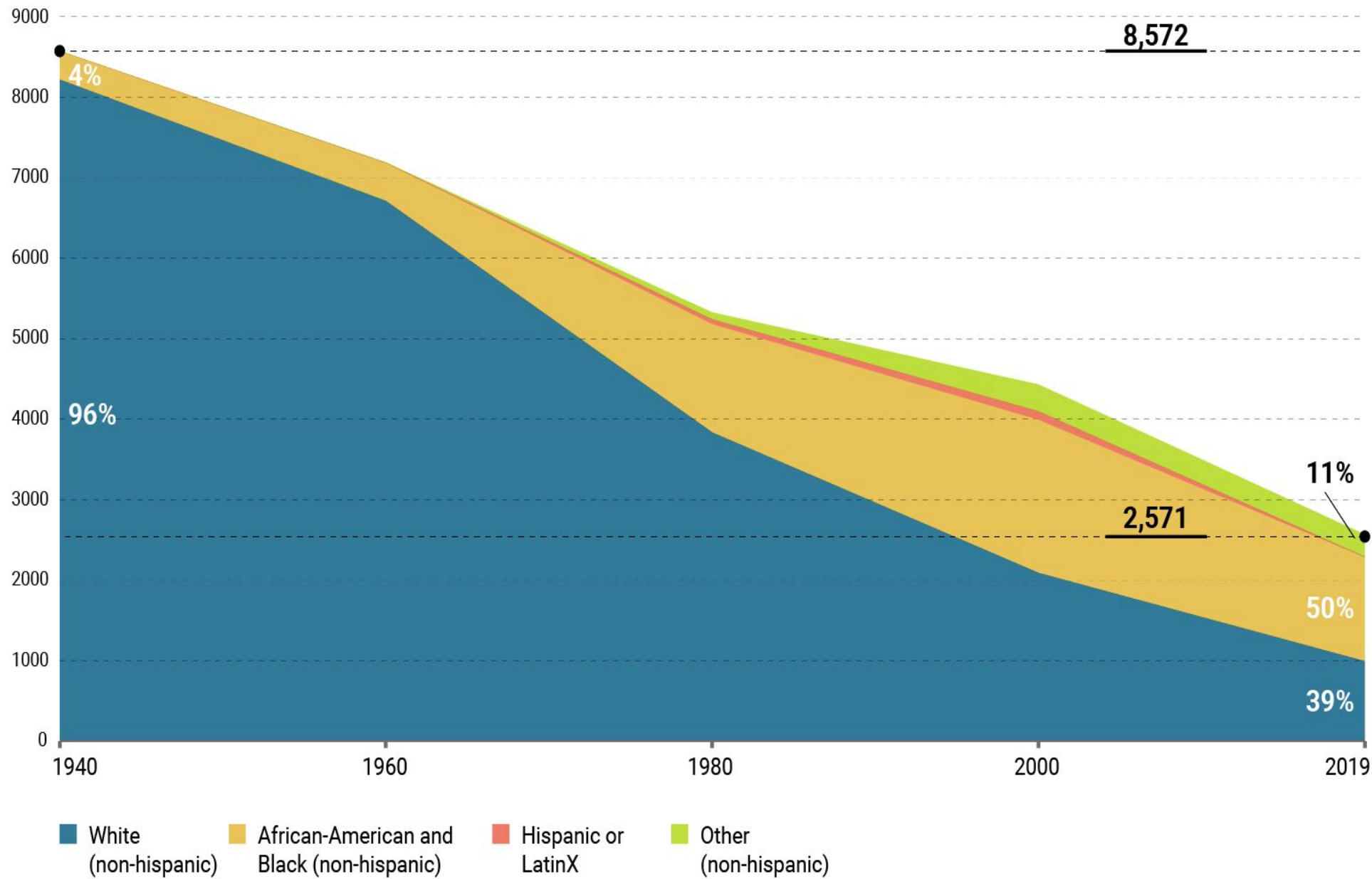
"I USED TO PUT MY BABY IN A STROLLER AND BRING THEM TO LINCOLN - ALL MY KIDS WENT THERE. THEY HAD A POOL... I WANT THAT FOR THE NEXT GENERATION - YOU CAN WALK TO THAT SCHOOL AND GET TO YOUR CHILD."

THE PAST

"I remember back in 19, the Summit Lake Neighborhood
[year]
was Fun & Educational. We used to
[adjective/description]
Swim and learn ~~it~~ at
[activity]
Lincoln Elementary. My fondest memory from
[place/street intersection]
that time is every other Friday we
[description]
went swimming.

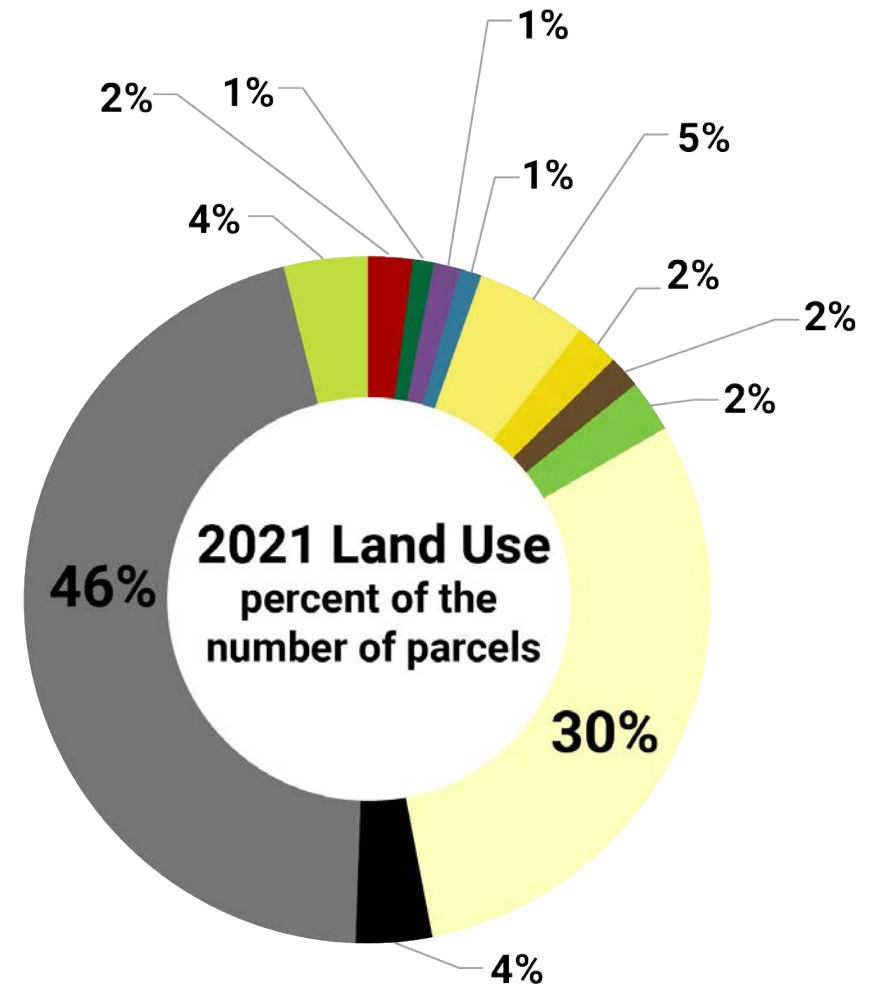
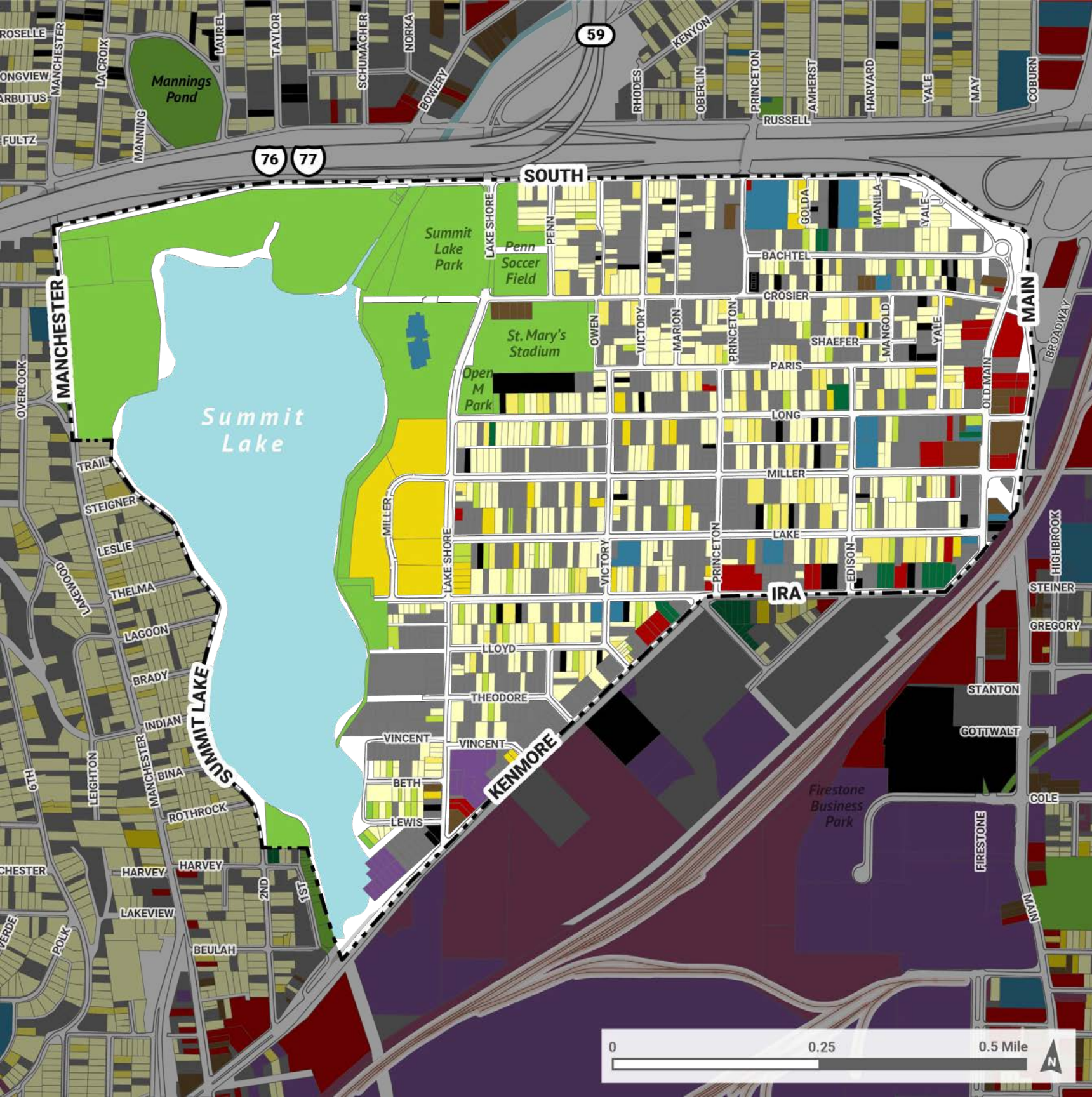
THE PAST

"I remember back in 2009, the Summit Lake Neighborhood
[year]
was very active. We used to
[adjective/description]
ride bikes around in
[activity]
whole neighborhood. My fondest memory from
[place/street intersection]
that time is going to play in the
[description]
woods besides the trail,
playing outside kitchen and house.

















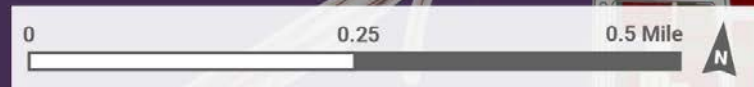
Since 1940, Summit Lake has lost **70%** of its population compared to Akron's decrease of **19%**

Source : Social Explorer, (U.S. Census, American Community Survey 5-year estimates, 2019)



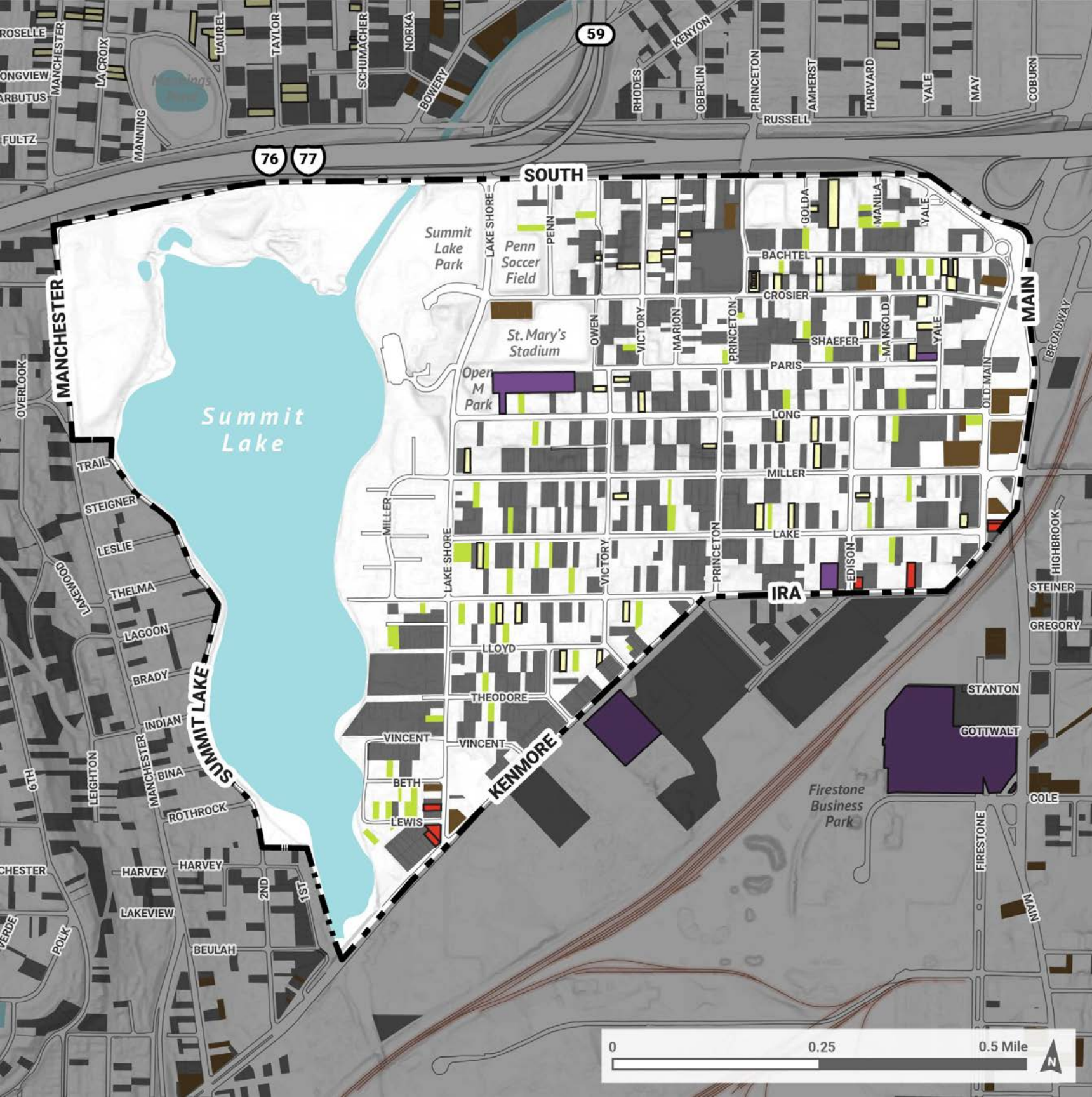
2021 Land Use

-  Choice Study Area
-  Single Family Residential
-  Multi Family (3 units or less)
-  Multi Family (4 units or more)
-  Commercial
-  Industrial
-  Institutional
-  Parks and Open Space
-  Community Garden
-  Side Yard
-  Utility
-  Parking
-  Vacant Land
-  Vacant Building





46% of the land is vacant



There are 83 acres of vacant land [63 football fields] & 54 vacant buildings in the Study Area [44 are residential]

2021 Vacancy

-  Choice Study Area
-  Vacant Residential Building
-  Vacant Commercial Building
-  Vacant Industrial Building
-  Vacant Land
-  Parking Lot
-  Side Yard

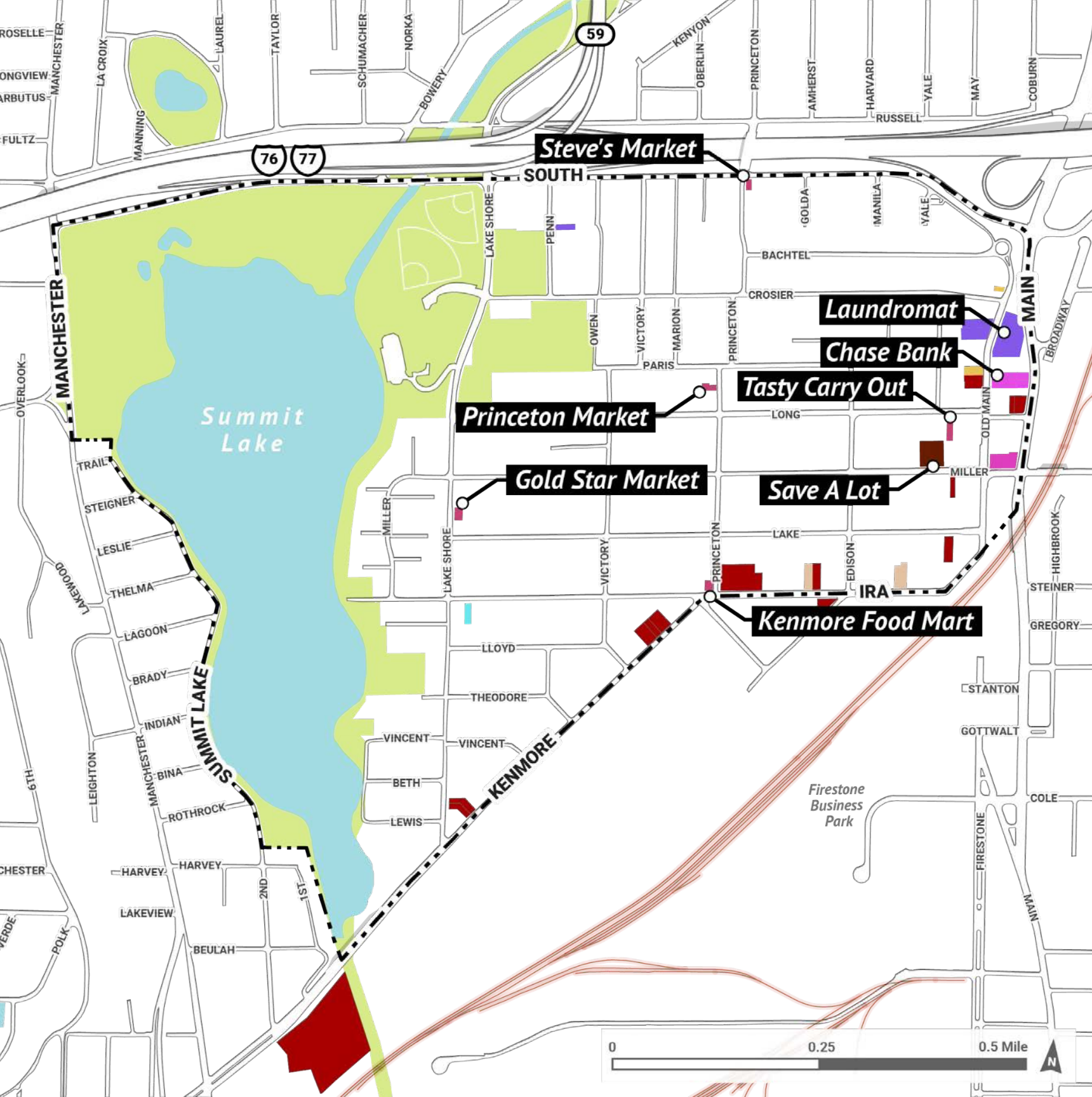
"THERE USED TO BE A PHARMACY
WHERE SAVE-A-LOT IS, A MEAT
MARKET ON MAIN, CLEANERS ON
OLD MAIN, BANKS, LOTS OF THINGS
THAT WERE ONCE HERE...."

**U DRIVE IT
AUTO SALES**
18 W. MILLER AV. AKRON, OH.
HOURS: MON. 11am: to 1:pm
330.701.1704 

**ShowCase Furniture
STORE**
NEW & USED 330-328-0530


Services are limited in the neighborhood

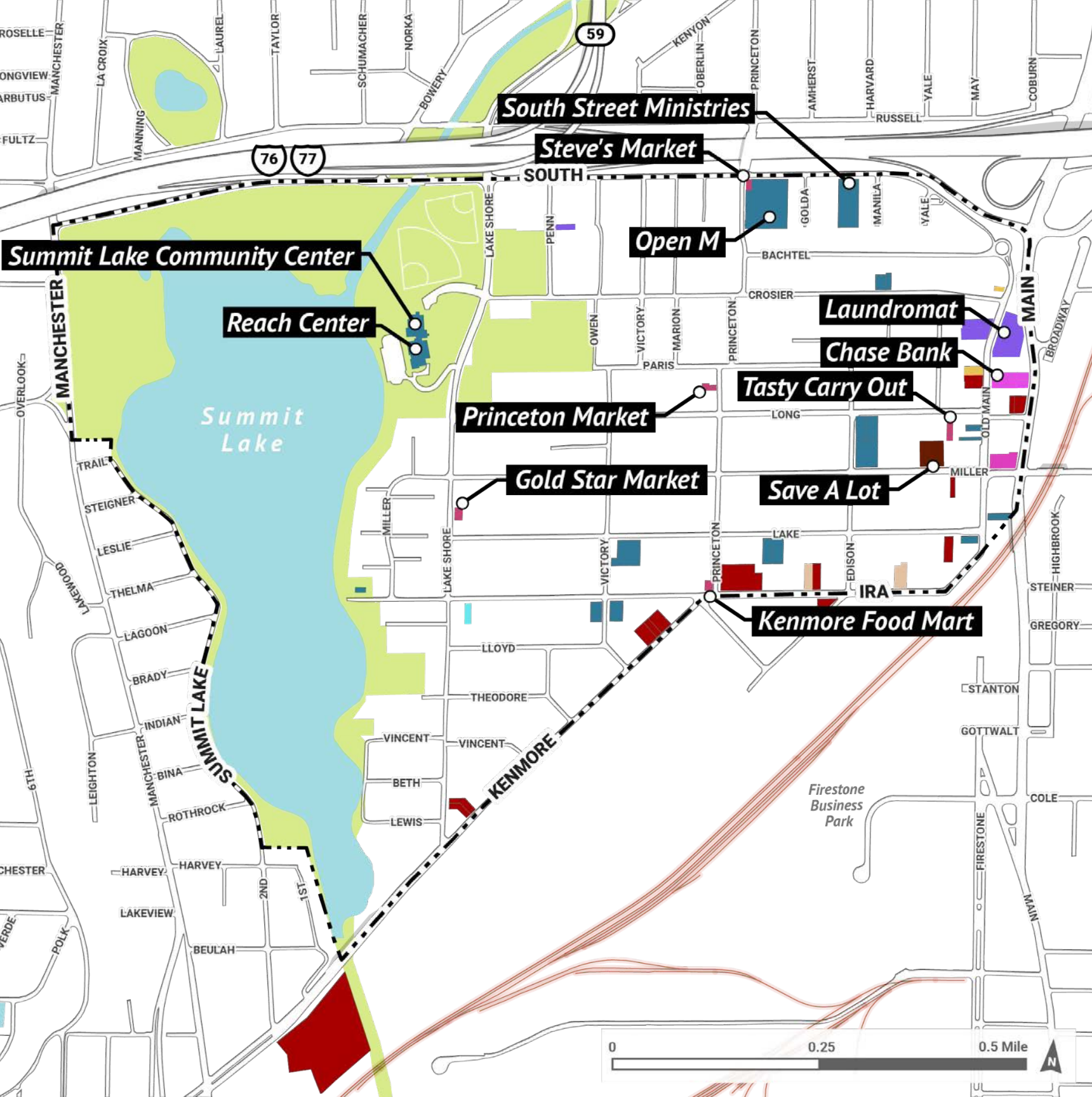









The area is home to just one supermarket and five corner stores.

2021 Commercial Services

-  Choice Study Area
-  Bar
-  Bank
-  Auto-related
-  Childcare
-  Convenience Store
-  Supermarket
-  Services
-  Other Commercial



2021 Commercial Services

-  Choice Study Area
-  Bar
-  Bank
-  Auto-related
-  Childcare
-  Convenience Store
-  Supermarket
-  Services
-  Other Commercial

& Institutional Services

-  Social Services/Religious

Houses in the neighborhood are old and large, making them difficult and costly to maintain



26%

Overall good condition



57%

Requires minor repairs



16%

Requires major repairs



1%

Appears unsafe



Limited neighborhood access

Lakefront

Summit Lake Apartments

Most of the neighborhood is disconnected from the lake.

Lake Access

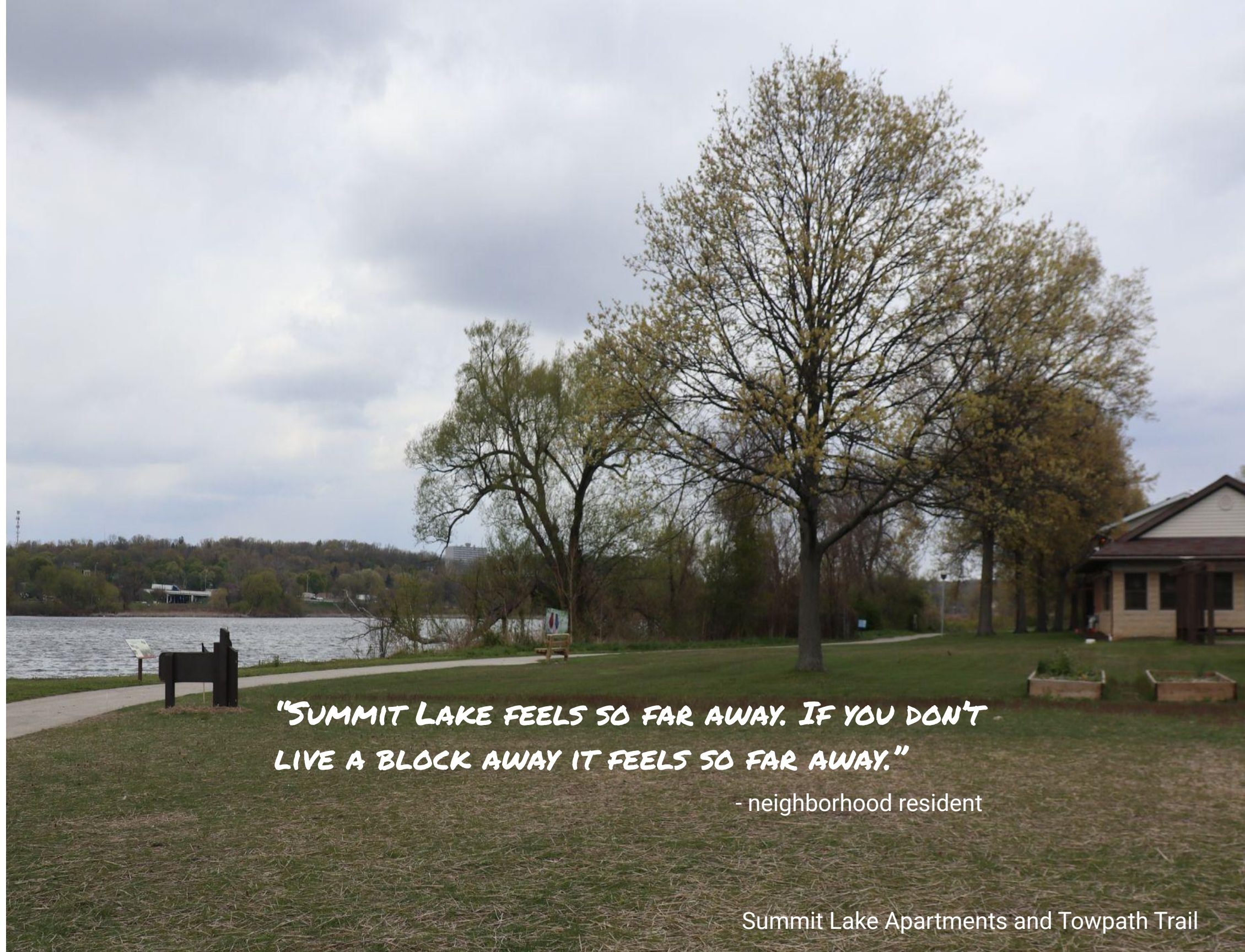
- < Lake Access Points
- Lake/River/Pond
- Parks/Open Space
- ▬ Existing Towpath Trail
- ▬ Proposed Summit Lake Trail
- Railroad

**On the west
side, streets
continue to
the lake**



Summit Lake Boulevard

**On the east
side, the
street grid
ends at Lake
Shore Blvd**



*"SUMMIT LAKE FEELS SO FAR AWAY. IF YOU DON'T
LIVE A BLOCK AWAY IT FEELS SO FAR AWAY."*

- neighborhood resident

Most sidewalks are in need of repair

"A LOT OF THE COMMUNITY WALKS IN THE STREETS, THE SIDEWALKS ARE TERRIBLE."



Positive developments are happening



Summit Lake Apartments Resident Survey

- **Final survey tool** - thank you for your feedback
- **Launched May 7th** - 26+ surveys to date
- **Goal** - 146 surveys (~65% response rate)
- **Multiple ways to take it** - on-line, hard copy, in-person
- **Incentives** - \$10 Walmart + \$10 cash, \$50 gift card raffle for first 50 to complete
- **Targeted outreach** - mail, events, survey parties, door-to-door
- **Close of survey** - end of June if possible, end of July if needed
- **Interest among task force members to assist?**

Neighborhood Survey

- **Final survey tool** - based on resident survey
- **Launch** - by May 27th
- **Goal** - 200 surveys
- **Multiple ways to take it** - on-line, hard copy, in-person
- **Incentives** - \$25 Visa card raffle every two weeks
- **Outreach** - social media, events, mail, neighborhood partners
- **Close of survey** - end of July if possible, end of August if needed

Partner Interviews

16 interviews with service partners to date

Key themes:

- Challenge of resident participation & engagement
- COVID + stimulus payment impacts across the board
- State and Local policy decisions have very real impact on resident lives (ex. access to Medicaid, building inspections, pro-landlord)
- Need for systems change - collective impact model
- Open to doing something different

Resident Interviews

- **First round - today through Friday**
- **Sit downs with Summit Lake Apartments residents**
- **Attending Salvation Army hot lunch at Summit Lake Community Center**
- **Walking the neighborhood with South Street Ministries and Summit Lake BuildCorps**
- **Friday Community Camp Fire program**

Choice Next Steps

- More interviews
- Completion of Summit Lake Apartments resident and Summit Lake neighborhood surveys
- Collection and analysis of additional community indicators
- Community workshop this summer

Questions?



Thank you!

