



SUMMIT LAKE

CHOICE NEIGHBORHOODS

Neighborhood/Housing Task Force

November 17, 2022

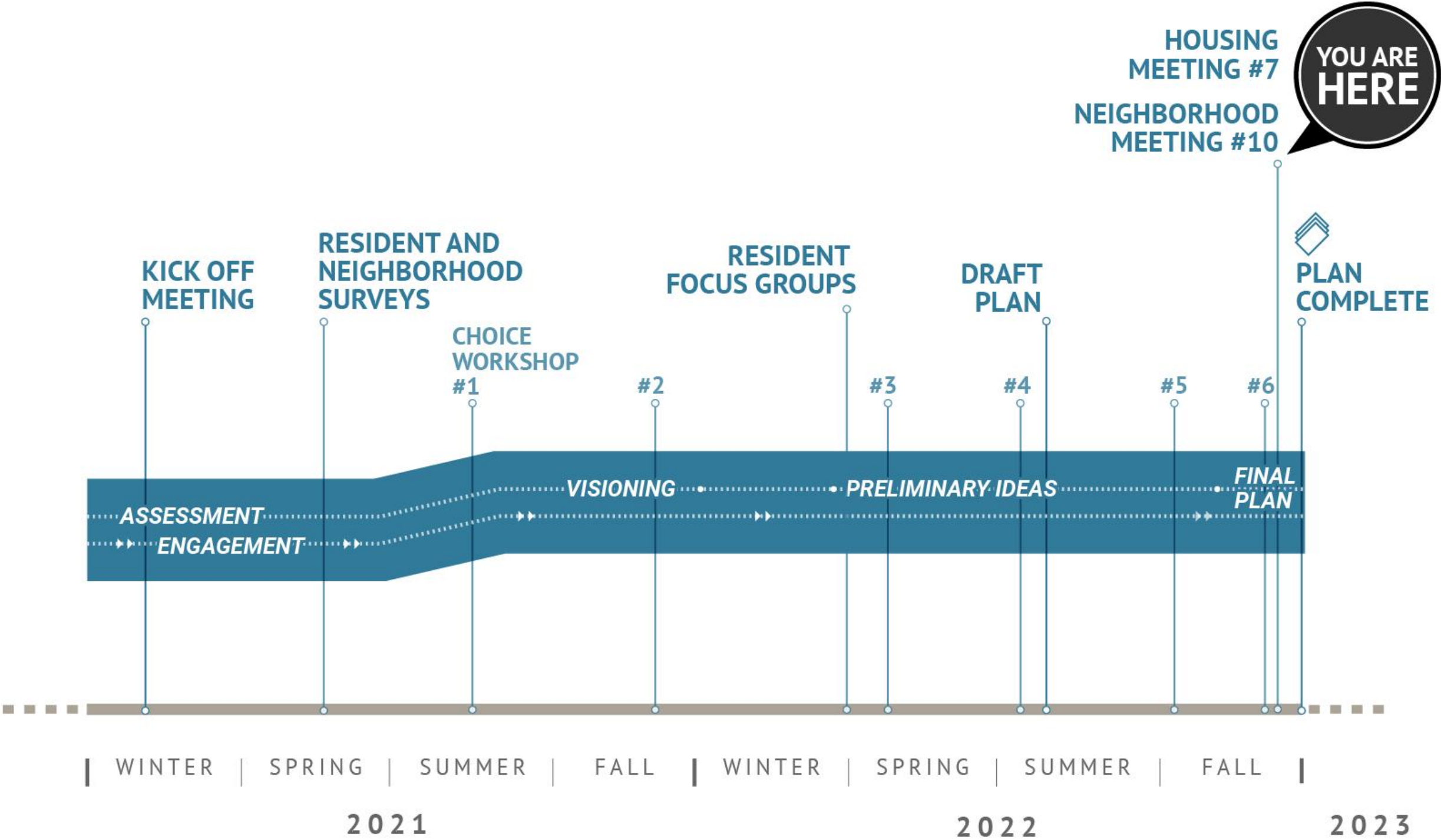


Welcome!

Today's Agenda

- Choice Neighborhoods Update
 - Workshops #6
 - Early Action Activity - New Gathering Space
 - Housing Plan
- Next steps

Schedule



Choice Neighborhoods Update

We held our last workshop (round 6) on November 15 at the Reach Opportunity Center

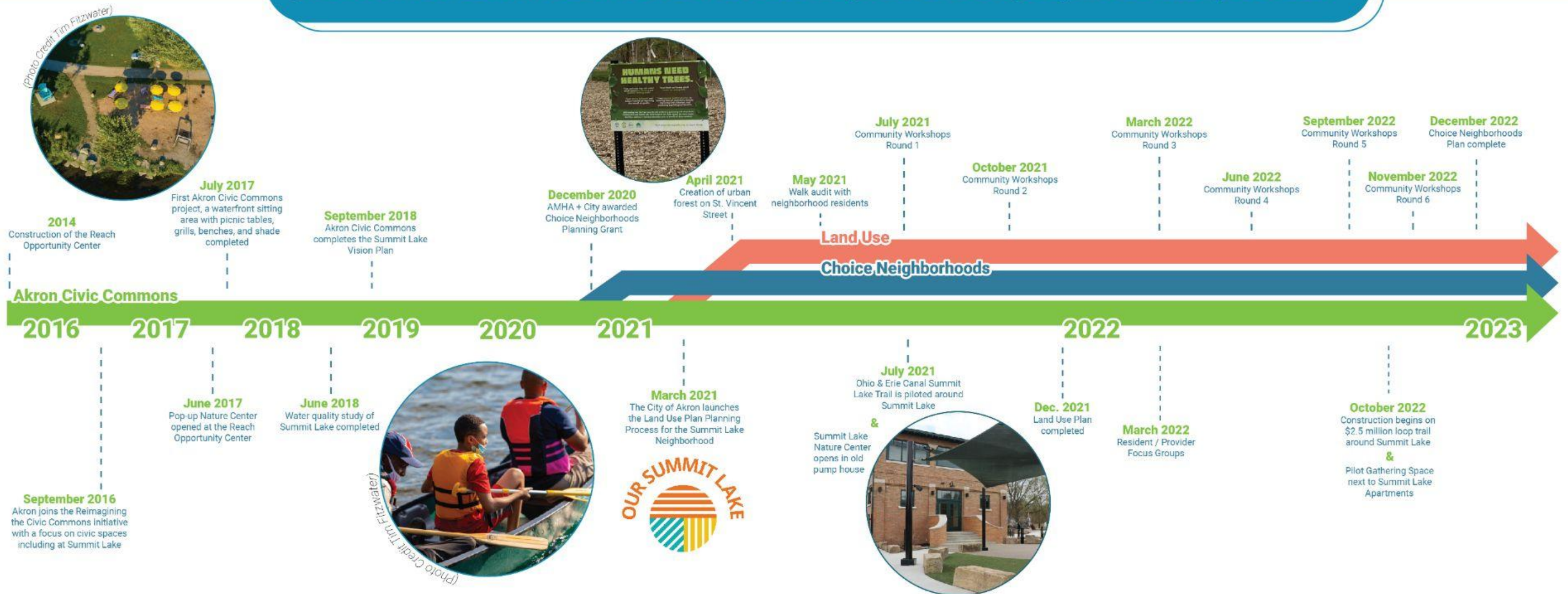


We reviewed the Choice Neighborhoods process in context with the Land Use and Civic Commons work.

Choice Neighborhoods Planning Process

SUMMIT LAKE
CHOICE NEIGHBORHOODS

Building on the work of the Akron Civic Commons, AMHA and the City led a 2-year process with Summit Lake residents. Thank you for being a part of this process!



We updated residents on what the City has been doing in Summit Lake.

1 Happenings in Summit Lake...because of you!

Because of your voice and your involvement, projects that have happened or are underway in the neighborhood...

Completed

Traffic Calming: Speed tables were installed on Miller Avenue this past Spring and are being removed for the winter. Did you like the speed tables and do you want them back in the Spring? If yes, tell the City you want them back!

SCAN THIS CODE TO MAKE THE REQUEST:



Street Lights: Broken street lights at the Community Center and along the Towpath Trail were fixed.

Tree Planting: Over 300 trees have been planted, making Summit Lake a greener neighborhood.

Gas Line Improvement: Gas pipeline replacement work with new sidewalks has been completed throughout the neighborhood.

Underway

Neighborhood Clean Up: The Summit Lake CDC launched a community clean-up program.

GET INVOLVED!



Home Improvements: The Akron Home Repair Program is beginning to work on home repairs. Sixteen homes in Summit Lake have applied for the program.

Coming Soon

Gathering Space: In the next month, a new pilot community space along the lake near the Summit Lake Nature Center and Summit Lake Apartments will be open! You helped design the space in previous workshops, and the pilot will test different elements for the final build next year.

Pilot Mid-block Greenway:

The City will be implementing a pilot greenway in Spring 2023 to make it easier for pedestrians to get across the neighborhood.

Mannings Pond Pocket Park:

The City is working with residents near Mannings Pond to create a pocket park.

North Shore Park:

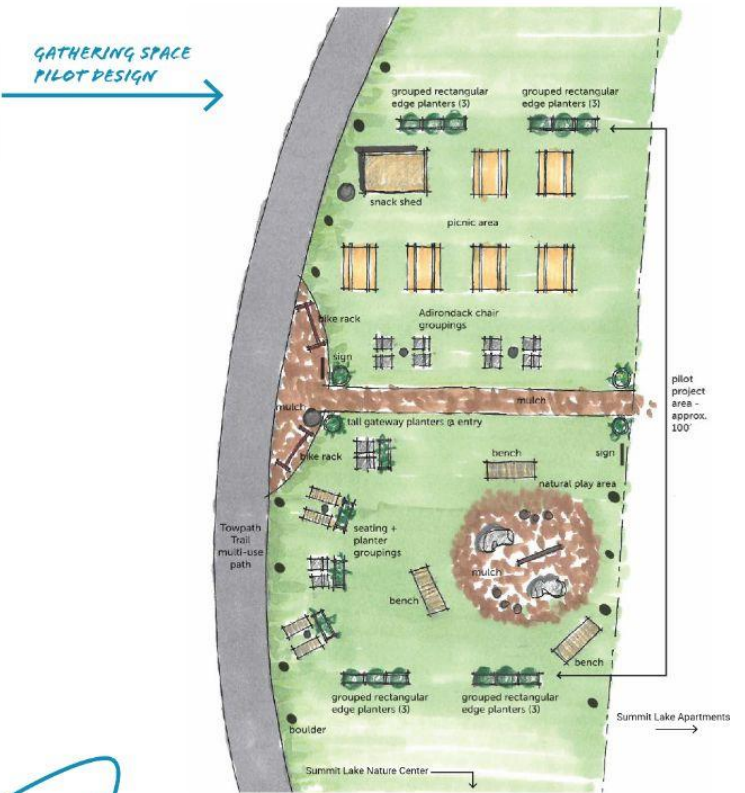
The design for this space is underway and will be completed early next year. Construction of the park will start next year.

Ohio & Erie Canal Summit Lake Trail:

Construction on the trail broke ground in October 2022 and is expected to be complete in June 2023.

Princeton Street Bridge:

City-funded community-requested beautification improvements will be completed by 2024.



Early action activity - New gathering space

Pilot installation happening now!

With permanent build in 2023



We summarized the People Plan recommendations and asked residents to tell us their priorities.

2 People Spotlight

VISION FOR THE FUTURE:

Residents are proud to live in Summit Lake with its strong sense of community and neighbors who look out for one another.

WHAT ARE YOUR TOP 5 PRIORITIES?

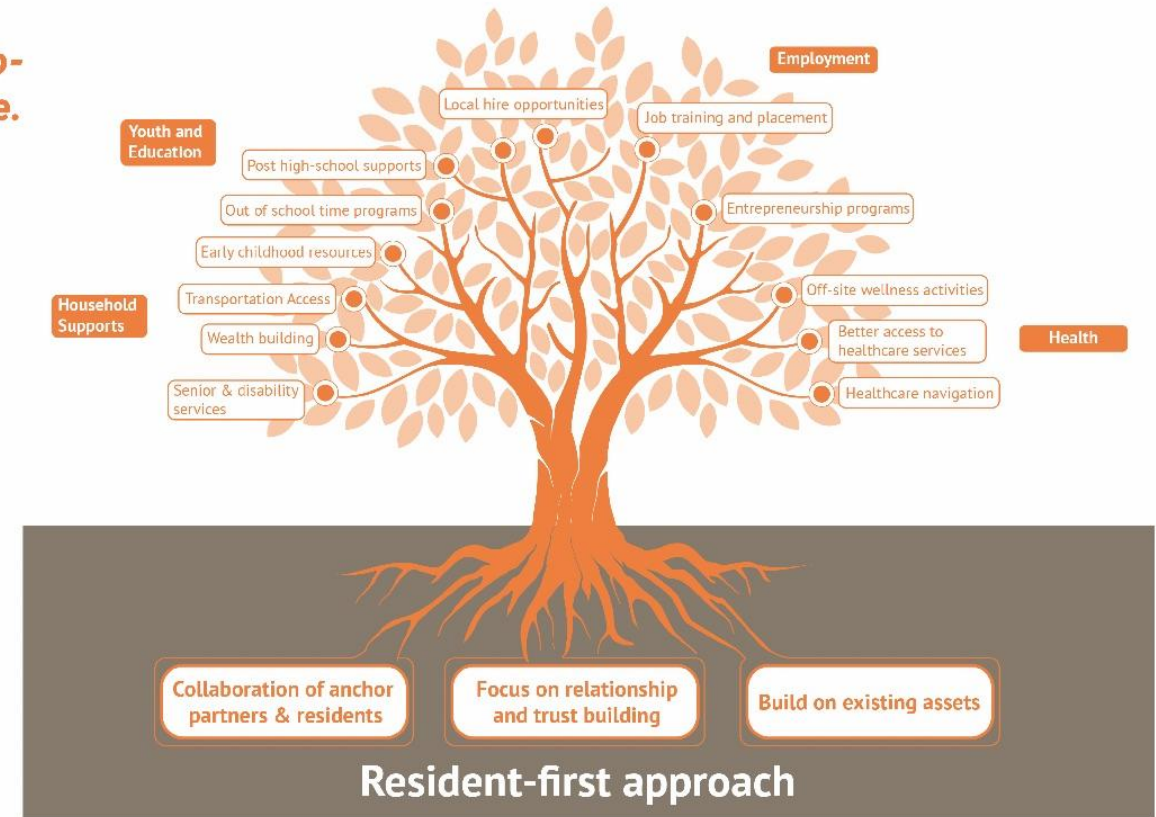
Education : Summit Lake youth have access to effective programs and services throughout their educational life course.

Early childhood (birth to 5)

- 1 Expand the number of local high quality childcare options
- 2 Assist parents with enrolling in childcare programs and applying for childcare subsidies if eligible
- 3 Prioritize admission of local residents to existing early childhood care programs in Summit Lake

School-age (age 5 to 17)

- 4 Form a teen/tween advisory group to inform out-of-school time program offerings and format
- 5 Leverage existing spaces within Summit Lake to host expanded out-of-school time offerings
- 6 Improve the reach of available transportation options for Summit Lake students



Transition age youth (age 17 to 22)

- 7 Connect youth interested in post-secondary education with appropriate supports and mentorship
- 8 Link interested youth with career exploration and school-time and summer youth employment programs

2 People Spotlight

VISION FOR THE FUTURE: Residents are proud to live in Summit Lake with its strong sense of community and neighbors who look out for one another.

Apartment's ●●●●● Neighborhood/Other ●●●●●

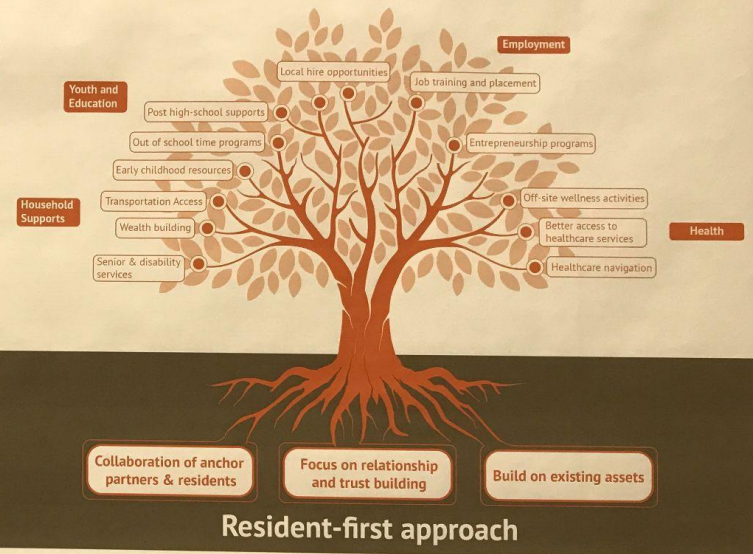


WHAT ARE YOUR TOP 5 PRIORITIES?

Education : Summit Lake youth have access to effective programs and services throughout their educational life course.

- Early childhood (birth to 5)**
- Expand the number of local high quality childcare options
 - Assist parents with enrolling in childcare programs and applying for childcare subsidies if eligible
 - Prioritize admission of local residents to existing early childhood care programs in Summit Lake

- School-age (age 5 to 17)**
- Form a teen/tween advisory group to inform out-of-school time program offerings and format
 - Leverage existing spaces within Summit Lake to host expanded out-of-school time offerings
 - Improve the reach of available transportation options for Summit Lake students



- Transition age youth (age 17 to 22)**
- Connect youth interested in post-secondary education with appropriate supports and mentorship
 - Link interested youth with career exploration and school-time and summer youth employment programs

Employment : Work-able Summit Lake adults are employed in living wage positions with benefits.

- Expand the presence of the satellite OhioMeansJobs Center at the Reach Opportunity Center
- Work with current workforce programs in Summit Lake to assess local participation and changes needed to increase local enrollment
- Establish a training and employment pipeline for Summit Lake residents focused on anticipated local employment opportunities
- Agreement to prioritize the hiring of local qualified residents for new development in Summit Lake
- Launch a grassroots small business/entrepreneur peer group to nurture and grow informal "side-hustles" into formal businesses

ANYTHING MISSING?
Write it on a sticky note.

Enter commission w/ residents to help know why they are coming...

Health : Summit Lake residents are physically, mentally, emotionally and socially resilient.

- Collaborate with health providers to establish satellite health facilities in Summit Lake with regular office hours
- Connect residents with or bring free/low-cost specialized health services (vision, dental, mammograms) to Summit Lake
- Expand the reach of the current Community Health Worker (CHW) program to serve all households
- Form a resident Community Wellness Committee that directs and helps plan events and activities that happen on-site

Household supports : Summit Lake households are connected with resources that empower them to thrive.

- Continue working with local organizations to address transportation barriers to services and employment
- Offer wealth-building and financial management workshops and access to safe and affordable banking products and services
- Link seniors and residents with a disability to local resources that specialize in empowering these populations to live independently

We summarized the neighborhood recommendations and asked residents to tell us their priorities.

3 Neighborhood Spotlight

VISION FOR THE FUTURE:

Summit Lake is a connected community with quality housing, streets and public spaces that support active and healthy lifestyles as well as protect the natural environment.

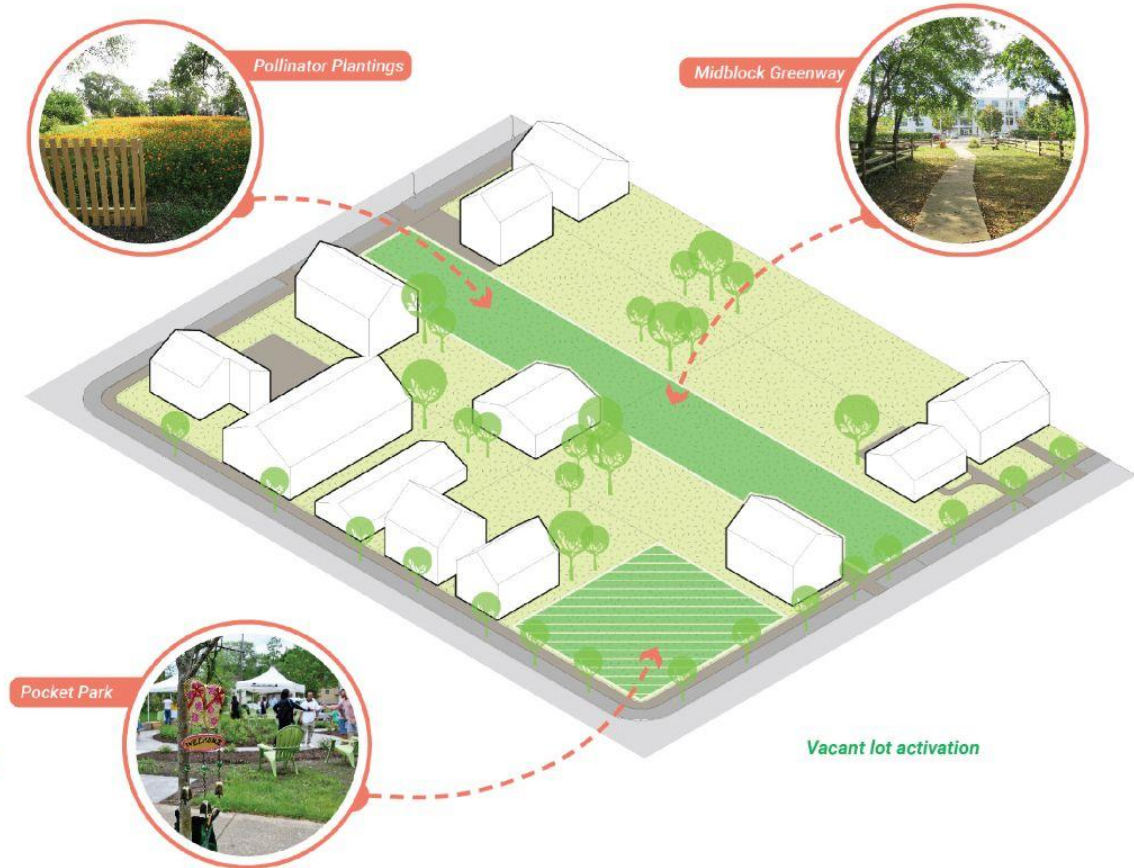
WHAT ARE YOUR TOP 5 PRIORITIES?

Tackle quality of life issues in the neighborhood

- 1** Grow the work and activity of the Summit Lake Community Development Corporation
- 2** Support the establishment and growth of small businesses
- 3** Target programs to address nuisance properties
- 4** Activate vacant lots with temporary and permanent uses

Invest in parks and open spaces designed for the community

- 5** Activate existing parks with year-round programming and events
- 6** Develop new open space away from the lake



3 Neighborhood Spotlight

VISION FOR THE FUTURE:

Summit Lake is a connected community with quality housing, streets and public spaces that support active and healthy lifestyles as well as protect the natural environment.

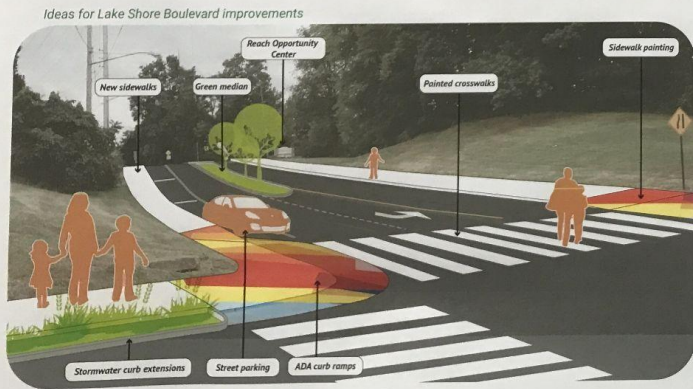
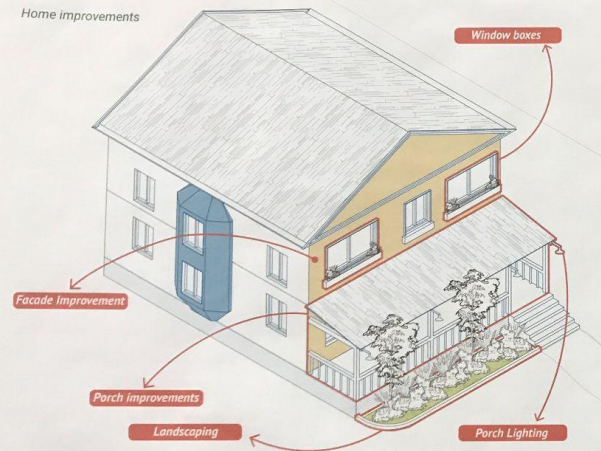
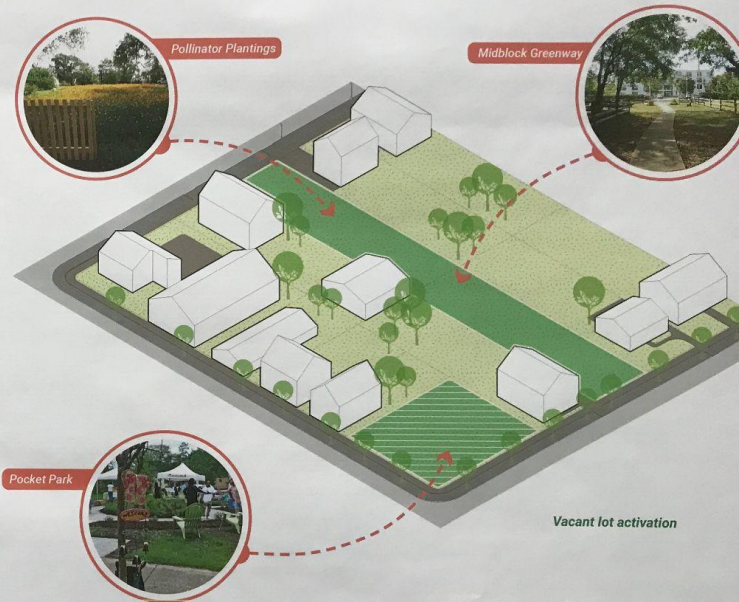
WHAT ARE YOUR TOP 5 PRIORITIES?

Tackle quality of life issues in the neighborhood

- 1 Grow the work and activity of the Summit Lake Community Development Corporation
- 2 Support the establishment and growth of small businesses
- 3 Target programs to address nuisance properties
- 4 Activate vacant lots with temporary and permanent uses

Invest in parks and open spaces designed for the community

- 5 Activate existing parks with year-round programming and events
- 6 Develop new open space away from the lake



Improve and expand the neighborhood housing stock

- 7 Support existing homeowners with home improvements
- 8 Address the quality of existing rental housing stock
- 9 Adopt tools and policies that minimize resident displacement from Summit Lake
- 10 Activate vacant lots with new housing

Rehab vacant homes

Create safe passageways to neighborhood destinations

- 11 Improve Lake Shore Boulevard to be the front door to the neighborhood
- 12 Make neighborhood streets pedestrian- and bicycle-friendly

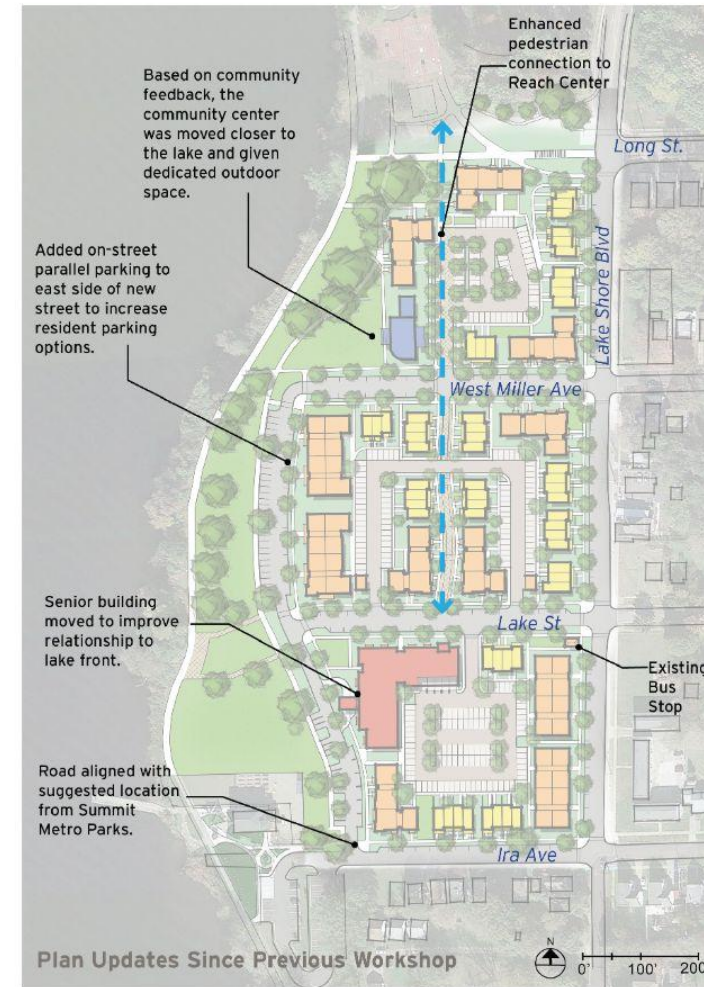
We presented the housing concept for the Summit Lake Apartments.

4 Housing Spotlight

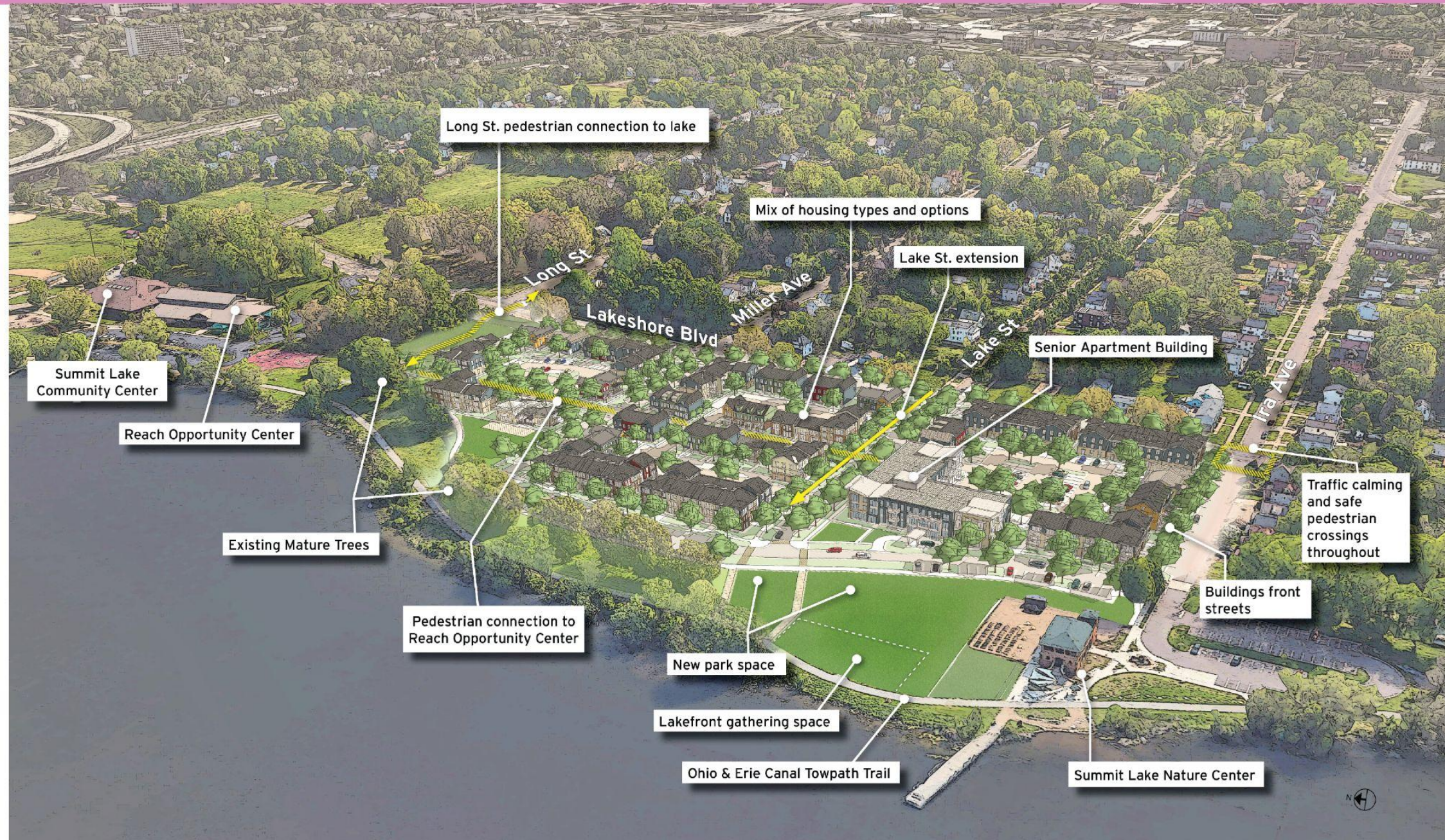
VISION FOR THE FUTURE:

Summit Lake Apartments will be redeveloped as a mixed-income community that is integrated into the neighborhood.

Draft Housing Concept Plan



- Approximately 300 units from one to four bedroom in a variety of building types, including townhomes, walk-up apartment buildings and a senior apartment building
- Keeps the street network that connects the site back to the community.
- Every street will have sidewalks and trees.
- Every intersection will include safe pedestrian crossings.
- All buildings will have doors that face the street to promote resident safety.
- Each residential building will have front and back yards that clearly identify what is private versus public outdoor space
- Residents will be able to park in off-street areas as well as on the street, with over 350 parking spaces across the site.
- A Community Center/event space for resident use is included.
- The site and buildings are designed to maximize accessibility for people with physical disabilities.



November 14th, 2022 | ©2022 Torti Gallas + Partners | 1923 Vermont Avenue, NW, Grimke School, 2nd Floor | Washington, DC 20001 | 301.588.4800



Housing Type Examples

Townhomes

- 2 to 3-story units
- Each apartment has a private entrance and porch
- Units can be designed to look like individual units with different fronts
- Can include no-step accessible units on the ground floor with a walk-up flat above



Walk-Up Apartments

- 3-story building
- Apartments are one-level with units located above one another
- The entrance for each apartment is located off a shared stairway in the middle of the building

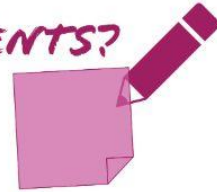


Senior Apartments

- 3 to 4-story building
- Building will have a lobby plus elevator
- Residents of the building will share common spaces
- The entrance for each apartment is off a hallway accessed by the elevator



COMMENTS?



November 14th, 2022 ©2022 Torti Gallas + Partners | 1923 Vermont Avenue, NW, Grinnell School, 2nd Floor | Washington, DC 20001 | 301.586.4800



5 Get involved!

We gave residents a preview of next steps for 2023 and provided sign up sheets to get involved.

With the planning work wrapping up, our focus now turns to implementation and we need your help! Sign up to be a part of making the vision for Summit Lake a reality.

IMMEDIATE NEXT STEP:

Transformation Plan due December 16, 2022



HERE'S WHAT IS COMING UP IN 2023:

Finalize housing plan

Secure land in the neighborhood for new housing

Identify and secure funding and partner commitments

Develop relocation plan

Continue resident engagement

Apply for a Choice Neighborhoods Implementation grant

QUESTIONS? COMMENTS?

Write it on a sticky note.



SIGN UP AND STAY INVOLVED!

Add your name to the sign up sheet to stay involved and let us know what you are most interested in working on.



Housing Plan - On-Site & Off-Site

Overall housing program goals

	# of units
Existing public housing units @ Summit Lake Apartments	239
Total proposed new housing units	479
PH replacement units (one-for-one replacement requirement)	239
Non-public housing units - other affordable units	144
Non-public housing units - market-rate (unrestricted) units	96

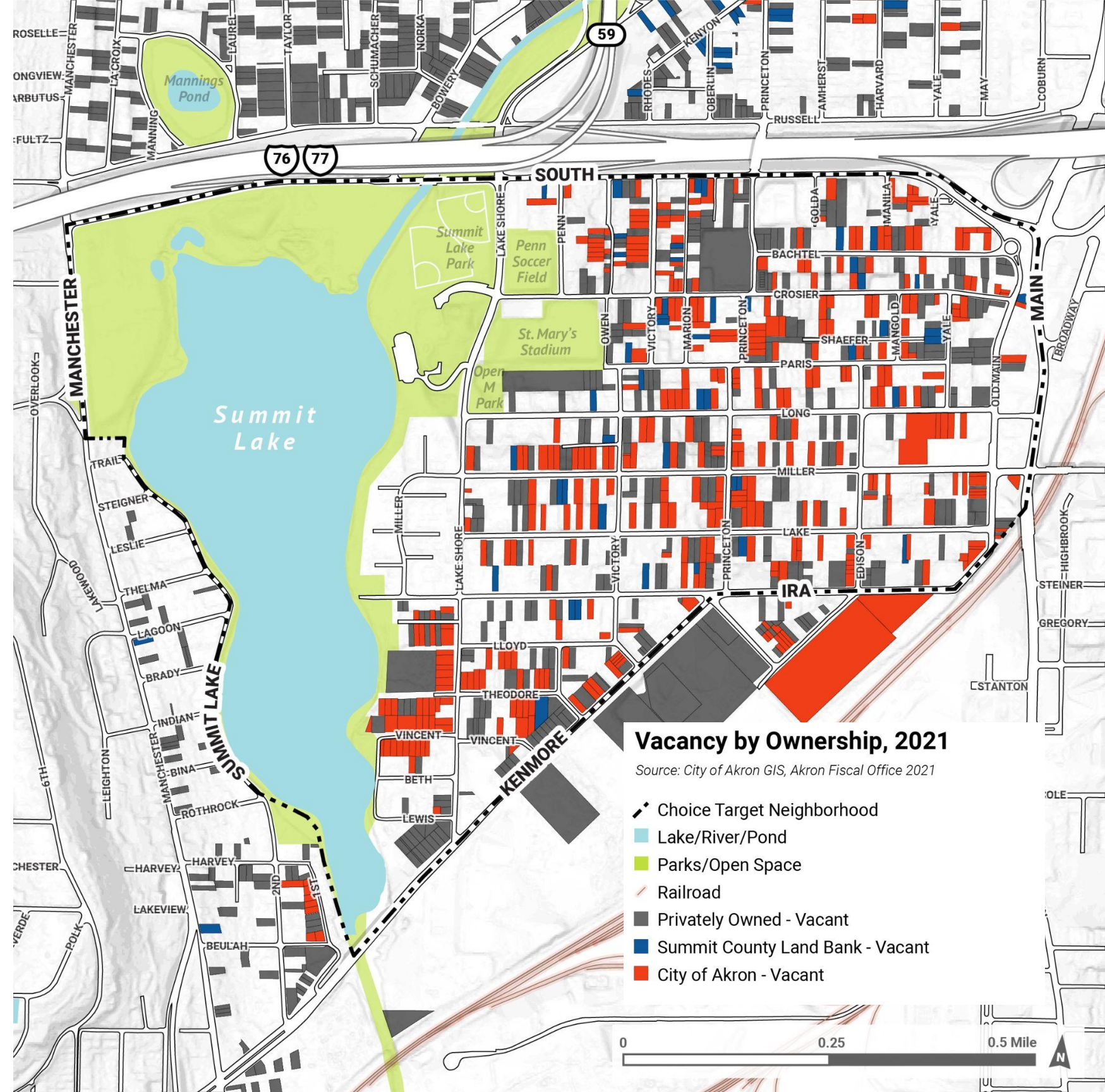
- Maximizes the points available for unit count and income affordability mix under the Choice Neighborhoods Implementation Grant
- PH replacement and non- PH replacement units will be mixed together by location and within a building(s)
- Some new units will be built off-site in the neighborhood (not on current Summit Lake Apartments footprint)

On-site at the Summit Lake Apartments

approximately 300 units

Off-site in the neighborhood

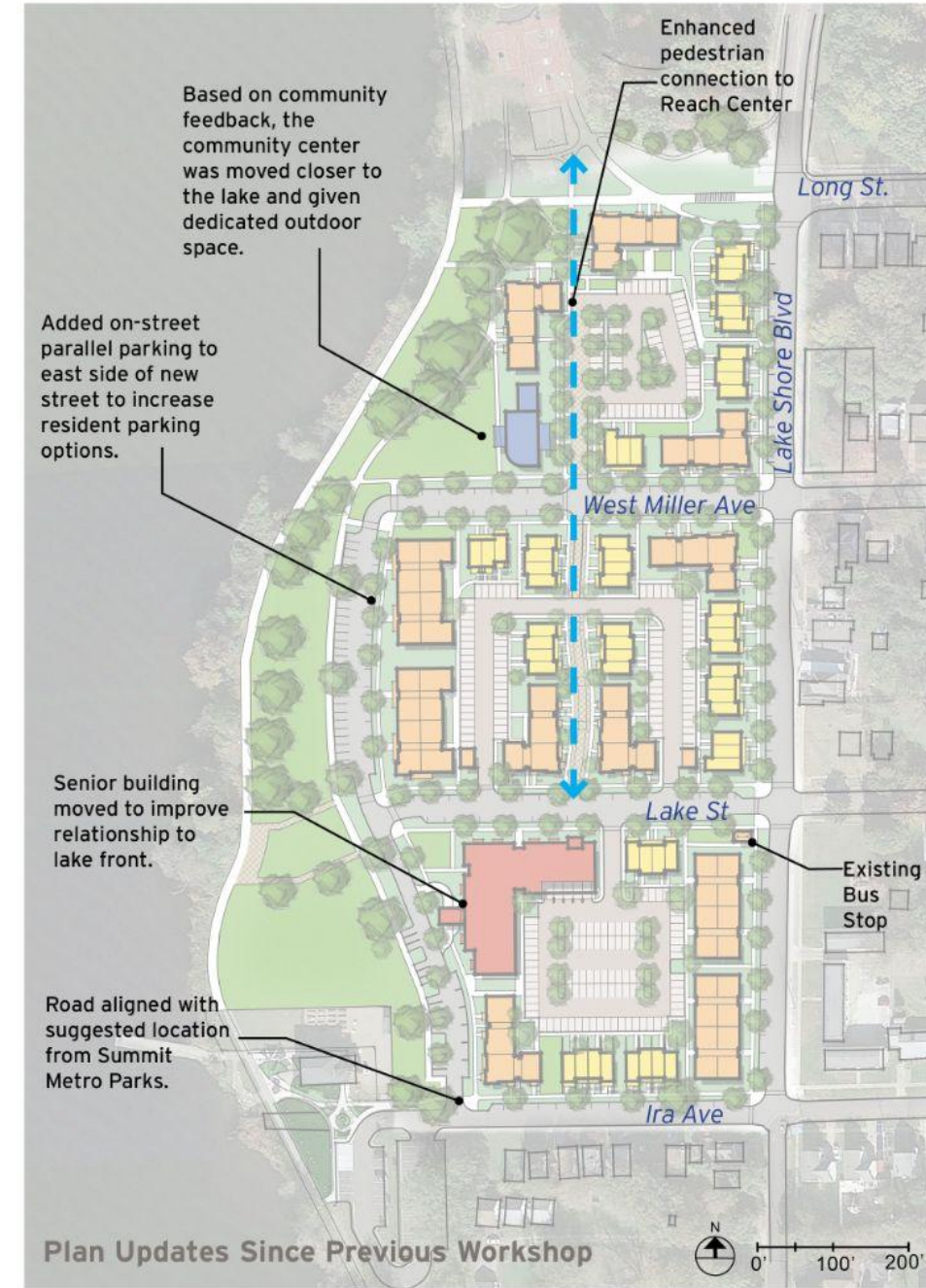
approximately 179 units needed



Draft Housing Concept Plan

Design Ideas

- This plan is comprised of approximately 300 one to four bedroom units found in a variety of building types, including townhomes, walk-up apartment buildings and a senior apartment building.
- Keeps the street network that connects the site back to the community.
- Every street will have sidewalks and trees.
- Every intersection will include safe pedestrian crossings.
- All buildings will have doors that face the street to promote resident safety.
- Each residential building will have front and back yards that clearly define what is private versus public outdoor space.
- Residents will be able to park in off-street areas as well as on the street, with over 350 parking spaces across the site.
- A Community Center/event space for resident use is included.
- The site and buildings are designed to maximize accessibility for people with physical disabilities.





Summit Lake Community Center

Reach Opportunity Center

Existing Mature Trees

Pedestrian connection to Reach Opportunity Center

Long St. pedestrian connection to lake

Mix of housing types and options

Lake St. extension

Senior Apartment Building

Traffic calming and safe pedestrian crossings throughout

Buildings front streets

New park space

Lakefront gathering space

Ohio & Erie Canal Towpath Trail

Summit Lake Nature Center

Housing Type Examples

Townhomes

- 2 to 3-story units
- Each apartment has a private entrance and porch
- Units can be designed to look like individual units with different fronts
- Can include no-step accessible units on the ground floor with a walk-up flat above



Walk-Up Apartments

- 3-story building
- Apartments are one-level with units located above one another
- The entrance for each apartment is located off a shared stairway in the middle of the building



Senior Apartments

- 3 to 4- story building
- Building will have a lobby plus elevator
- Residents of the building will share common spaces
- The entrance for each apartment is off a hallway accessed by the elevator



November 14th, 2022 | ©2022 Torti Gallas + Partners | 1923 Vermont Avenue, NW, Grimke School, 2nd Floor | Washington, DC 20001 | 301.588.4800

Next Steps

- **Final Transformation Plan - due December 16**
 - **Finalize Housing Plan - on-site + off-site**
 - **Identify lead partners for each Neighborhood Plan strategy**
 - **Pinpoint anchor partners for the People Plan**
 - **Decide on the implementation structure - how do we work together to make the plan a reality?**
- **Pursue implementation funding in 2023**

