

SUMMIT LAKE

CHOICE NEIGHBORHOODS



Joint Land Use / Neighborhood Task Force

May 20, 2021



DANIEL HARRIGAN, MAYOR

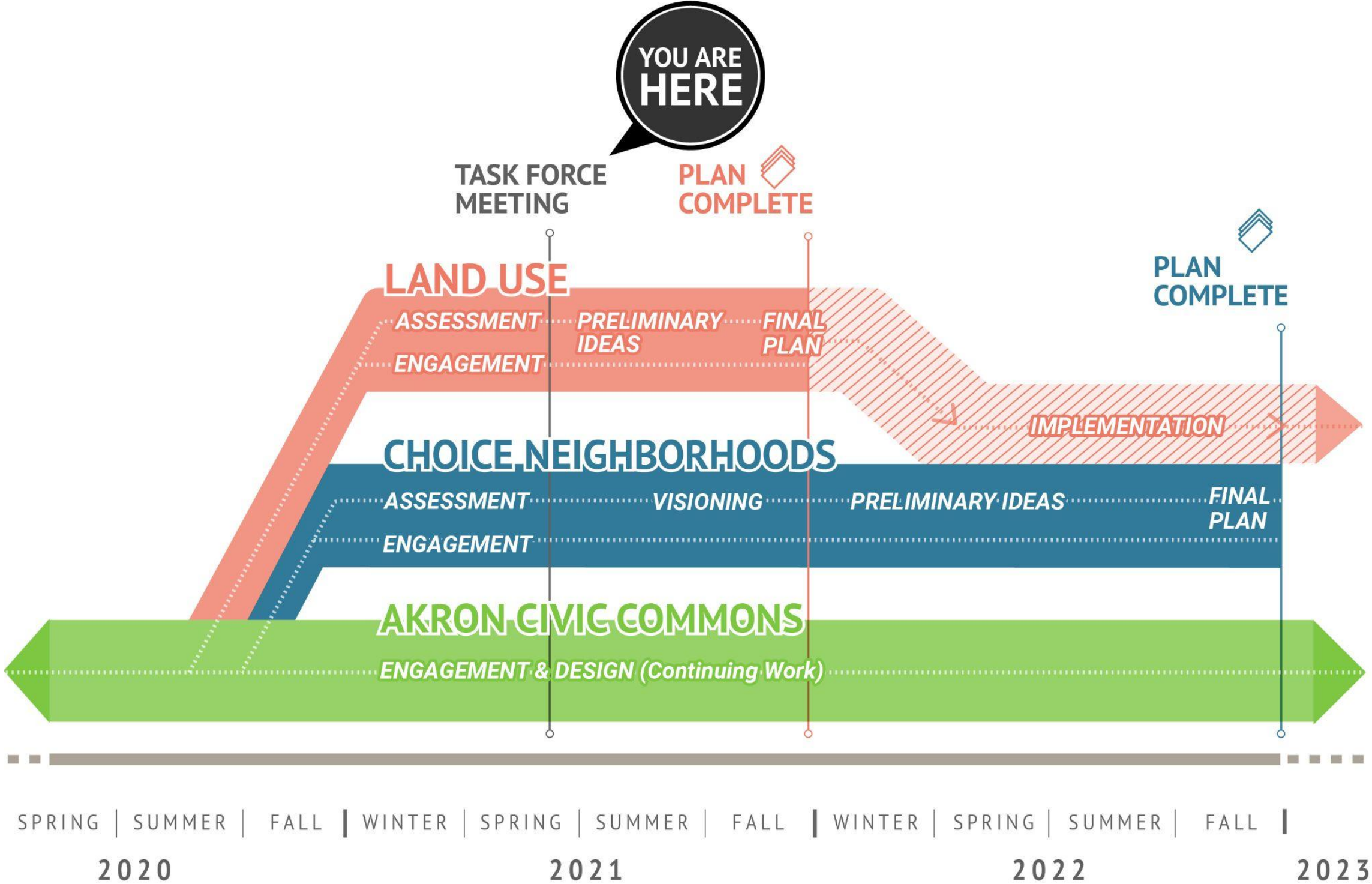
A scenic view of a lake with a wooden pier extending into the water under a clear blue sky. The pier is made of dark wood and has a metal railing. The water is calm and reflects the sky and the surrounding greenery. In the background, there are trees and a few buildings on a hill.

Welcome!

Today's Agenda

- Choice Neighborhoods update
- Akron Civic Commons update
- Land Use Plan update

Schedule



Choice Activities to Date

- Field survey in April
- Launch of Summit Lake Apartments survey - Neighborhood survey coming soon
- Launch of People’s History of Summit Lake
- Interviews with residents and service providers

A PEOPLE'S HISTORY OF SUMMIT LAKE

The City of Akron is embarking on a resident-led process to determine how to use **city-owned vacant land** in Summit Lake. At the same time, the Akron Metropolitan Housing Authority and the City are beginning a resident-led planning process that looks at **the whole neighborhood** and **the needs of neighborhood residents** by identifying areas for improvement and investment, like housing, businesses, parks, streets, services, and safety.

These plans are a chance for you to write your own story for the future but we also want to hear your stories about Summit Lake yesterday and today. We need **YOU** to create a **personal history of the neighborhood**.

Let's go back in time together to visit _____'s
 _____ [your name]
 Summit Lake. Here's something to get you started or feel free to turn
 the card over and share whatever you want.

THE PAST

"I remember back in _____ [year]
 _____ [adjective/description]
 _____ [activity]
 _____ [place/street intersection]
 that time is _____

SUMMIT LAKE CHOICE NEIGHBORHOODS **SUMMIT LAKE APARTMENTS RESIDENT SURVEY**

INTRODUCTION


The Akron Metropolitan Housing Authority (AMHA) and the City of Akron are starting a process to find out what improvements residents want for Summit Lake and the Apartments. We need your help to get started. We want to hear what changes YOU would like to see.

Please complete this survey. The survey should take no longer than 20 to 30 minutes to complete. As a thank you for your time, you will receive a \$10 Walmart and a \$10 Visa gift card courtesy of Akron Civic Commons and AMHA.

It is your choice to complete in this survey. **Your answers are confidential and individual answers will not be shared with AMHA or the City – they will only receive a summary of the answers received. Your answers or decision to complete the survey will NOT impact your housing at Summit Lake Apartments.**

If you have any questions about this survey, please call (330) 252-9263 or send an email to ChoiceNeighborhoods@AkronHousing.org. AMHA and the City will also be holding virtual and in-person meetings and workshops, so please attend and get involved!

Thank you for your time today.



Map of Summit Lake Neighborhood

Legend:

- Choice Neighborhoods Study Area
- Summit Lake Apartments
- Lake/Water Pond
- Parks/Open Space
- Existing Traps/Foot
- Proposed Summit Lake Trail
- Railroad

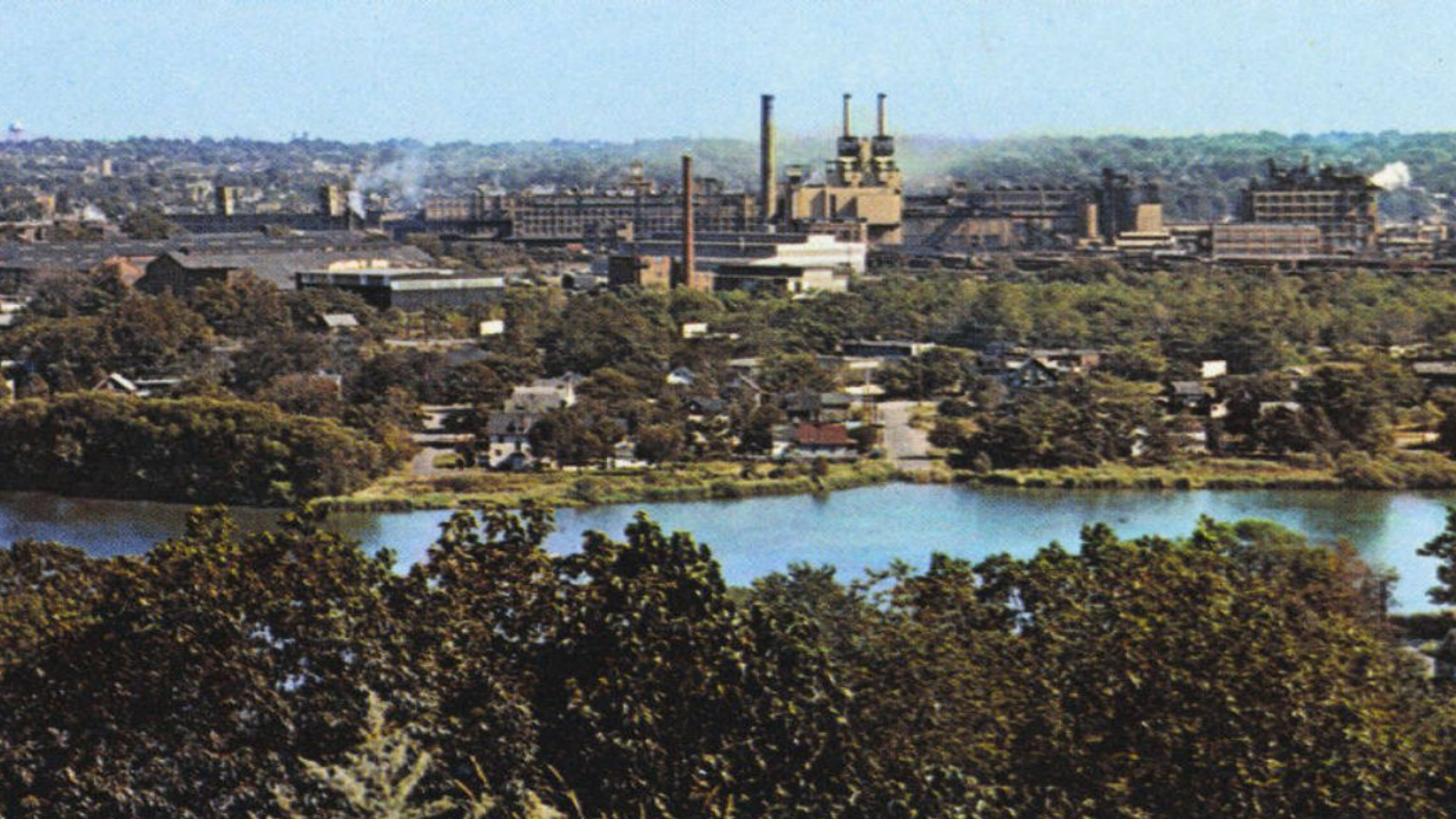
AMHA, HOUSING AUTHORITY, AKRON CIVIC COMMONS

Summit Lake today is an asset but it wasn't always

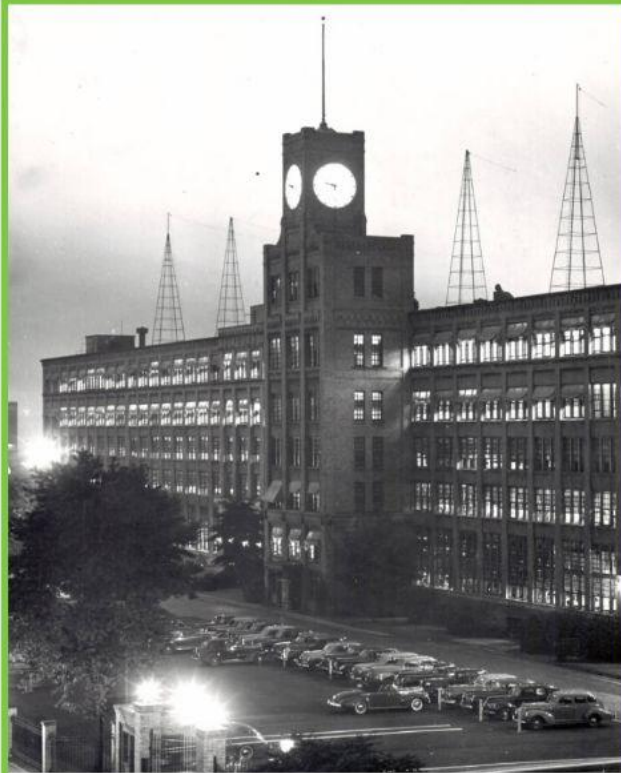




SUMMIT LAKE.



Industry brought growth but also pollution to Summit Lake



EARLY 1900s

The Big Four rubber and tire companies brought jobs and growth to the area.

They drew water from Summit Lake for industrial use, but also dumped effluent into the lake.



Aerial view of Summit Beach Park, circa 1920s.

1917-1958

Summit Beach Park was Akron's "Million Dollar Playground", and featured the country's largest funhouse as well as its largest mosaic pool. The amusement park attracted huge numbers of pleasure-seekers in its hey day.

But while they frolicked on the shores, the lake waters were considered unsafe and remained so until a 2017 assessment found the water to be safe for recreational activities.



Over time, the loss of industry, highway construction and urban renewal contributed to the neighborhood's decline



1949



1988

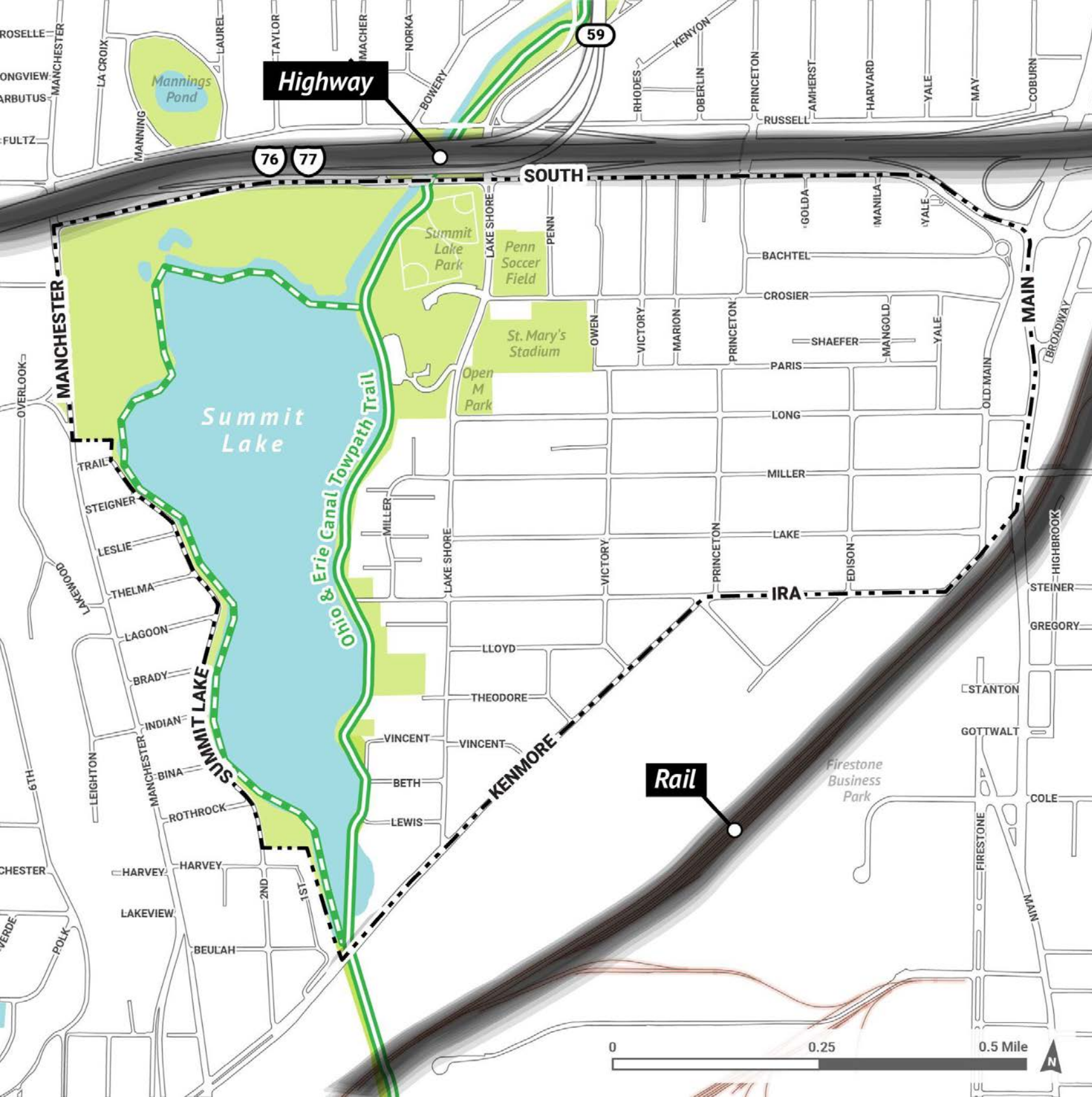
1960s

Highway construction split the Summit Lake neighborhood in two and displaced hundreds of households. The highway also cut the southern portion of Summit Lake off from the rest of the city.



1970s

The Big Four companies began closing down or relocating plants, resulting in mass job loss for Summit Lake residents.



Today, the neighborhood is isolated from the rest of the city

Neighborhood Barriers

- Choice Study Area
- Lake/River/Pond
- Parks/Open Space
- Existing Towpath Trail
- Proposed Summit Lake Trail
- Railroad

But Summit Lake is also a tight-knit community

We are filling out our understanding of the neighborhood through

interviews

&

personal histories

"IT'S A SAFE PLACE. THAT'S GONE FROM A LOT OF NEIGHBORHOODS - KIDS BEING ABLE TO GO TO YOUR NEIGHBORS FOR HELP."

"IT'S SMALL ENOUGH HERE, I KNOW WHO THE KIDS BELONG TO, I DO LIKE THAT."

"WHEN I MOVED HERE, THIS WAS A NEIGHBORHOOD, STREETS WERE FILLED WITH HOMES, CHILDREN, SCHOOLS, NOW WE JUST SEE BUSES, EVERYTHING IS OUTSIDE."

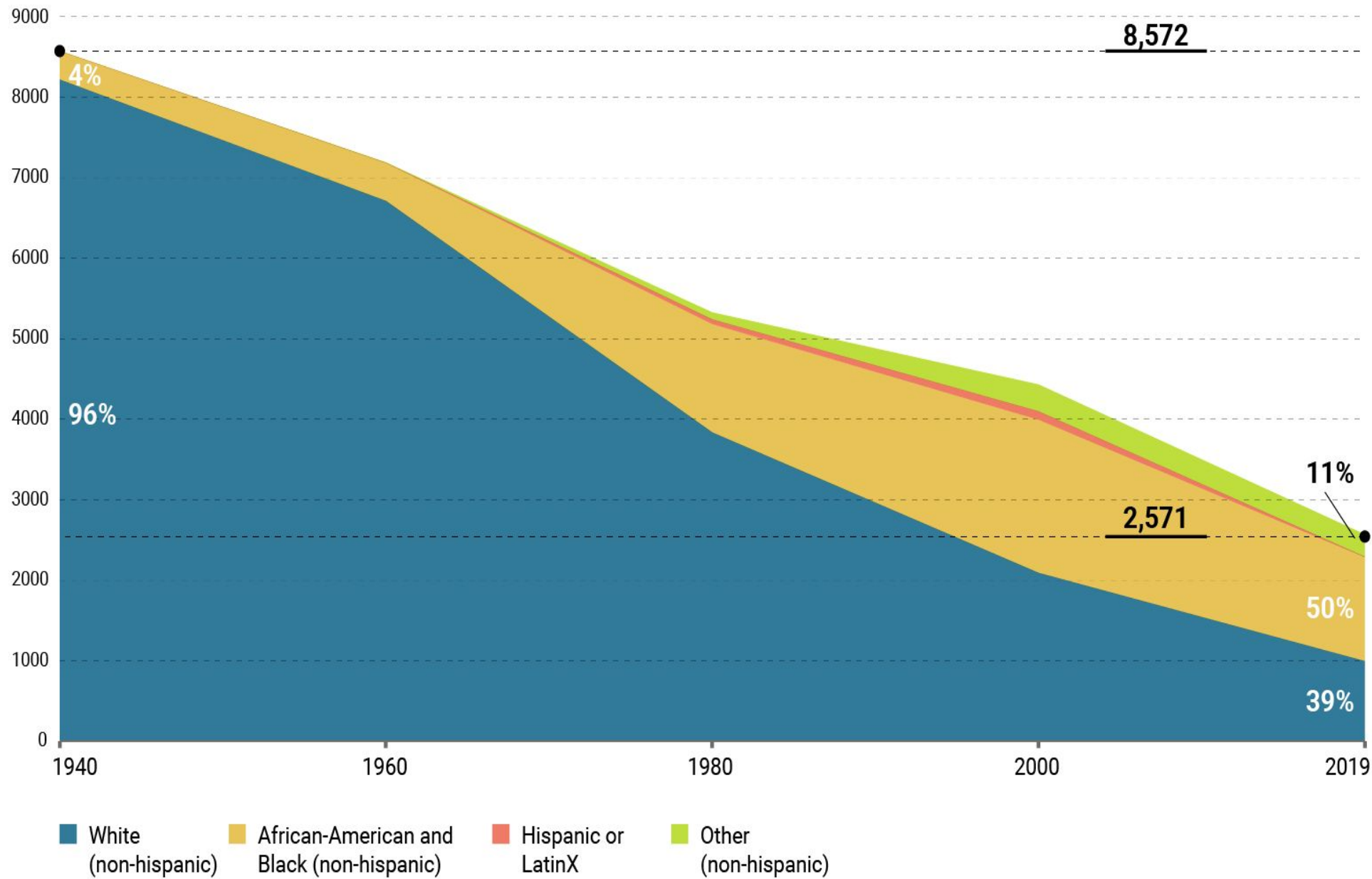
"I USED TO PUT MY BABY IN A STROLLER AND BRING THEM TO LINCOLN - ALL MY KIDS WENT THERE. THEY HAD A POOL... I WANT THAT FOR THE NEXT GENERATION - YOU CAN WALK TO THAT SCHOOL AND GET TO YOUR CHILD."

THE PAST

"I remember back in 19 [year], the Summit Lake Neighborhood was Fun & Educational [adjective/description]. We used to Swim and learn [activity] at Lincoln Elementary [place/street intersection]. My fondest memory from that time is every other Friday we [description] went swimming.

THE PAST

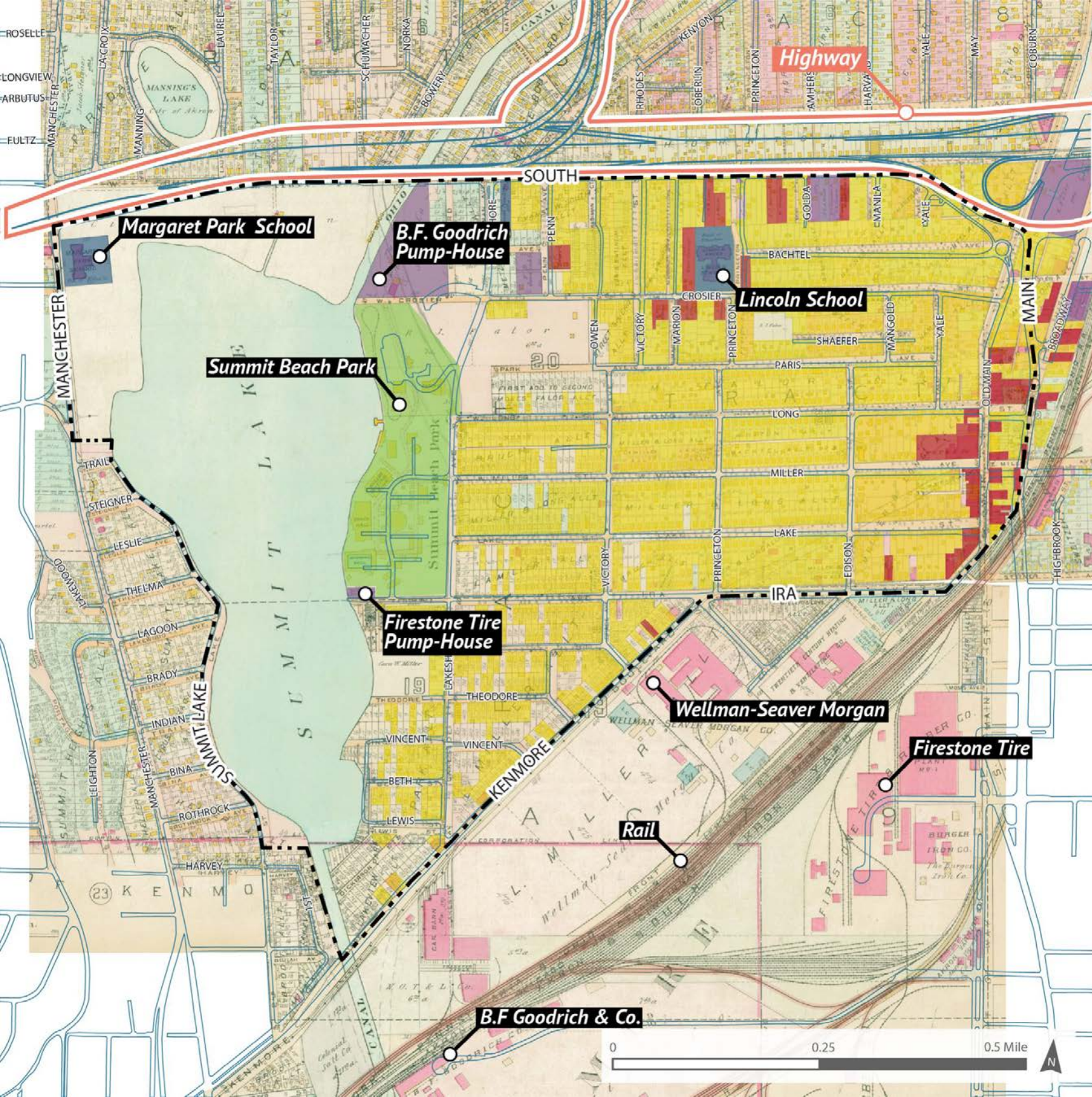
"I remember back in 2009 [year], the Summit Lake Neighborhood was very active [adjective/description]. We used to ride bikes around [activity] in where neighborhood [place/street intersection]. My fondest memory from that time is going to play in the [description] woods besides the trail, playing outside kitchen and house.



Since 1940, Summit Lake has lost **70%** of its population compared to Akron's decrease of **19%**

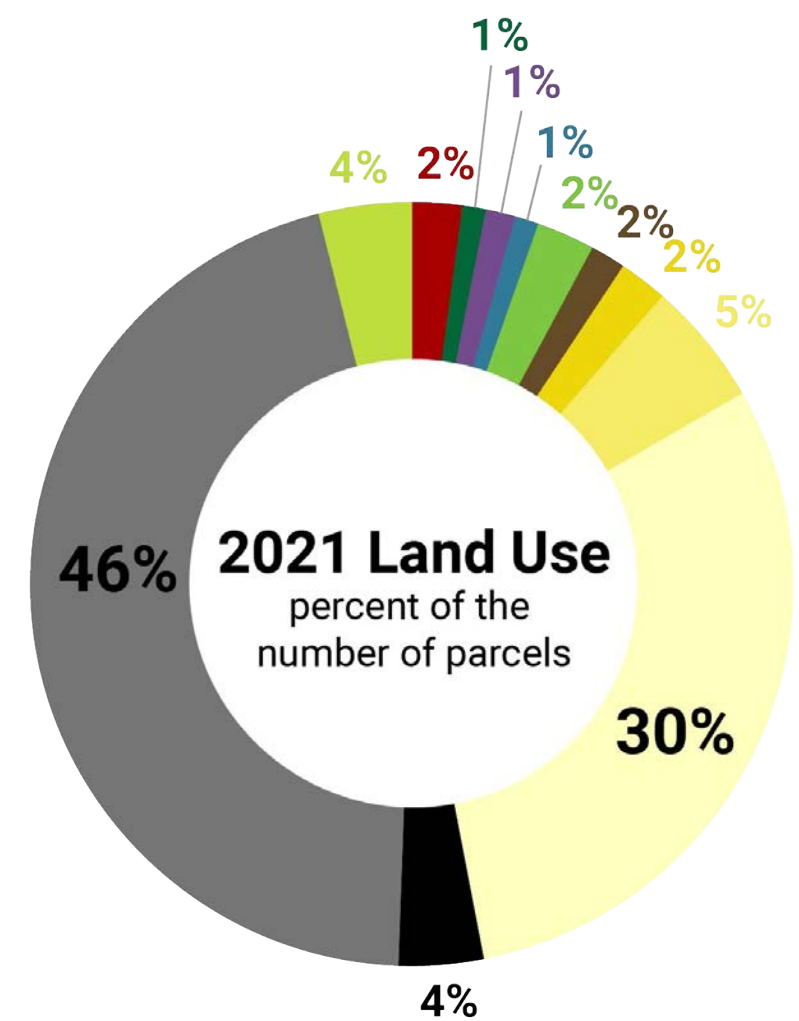
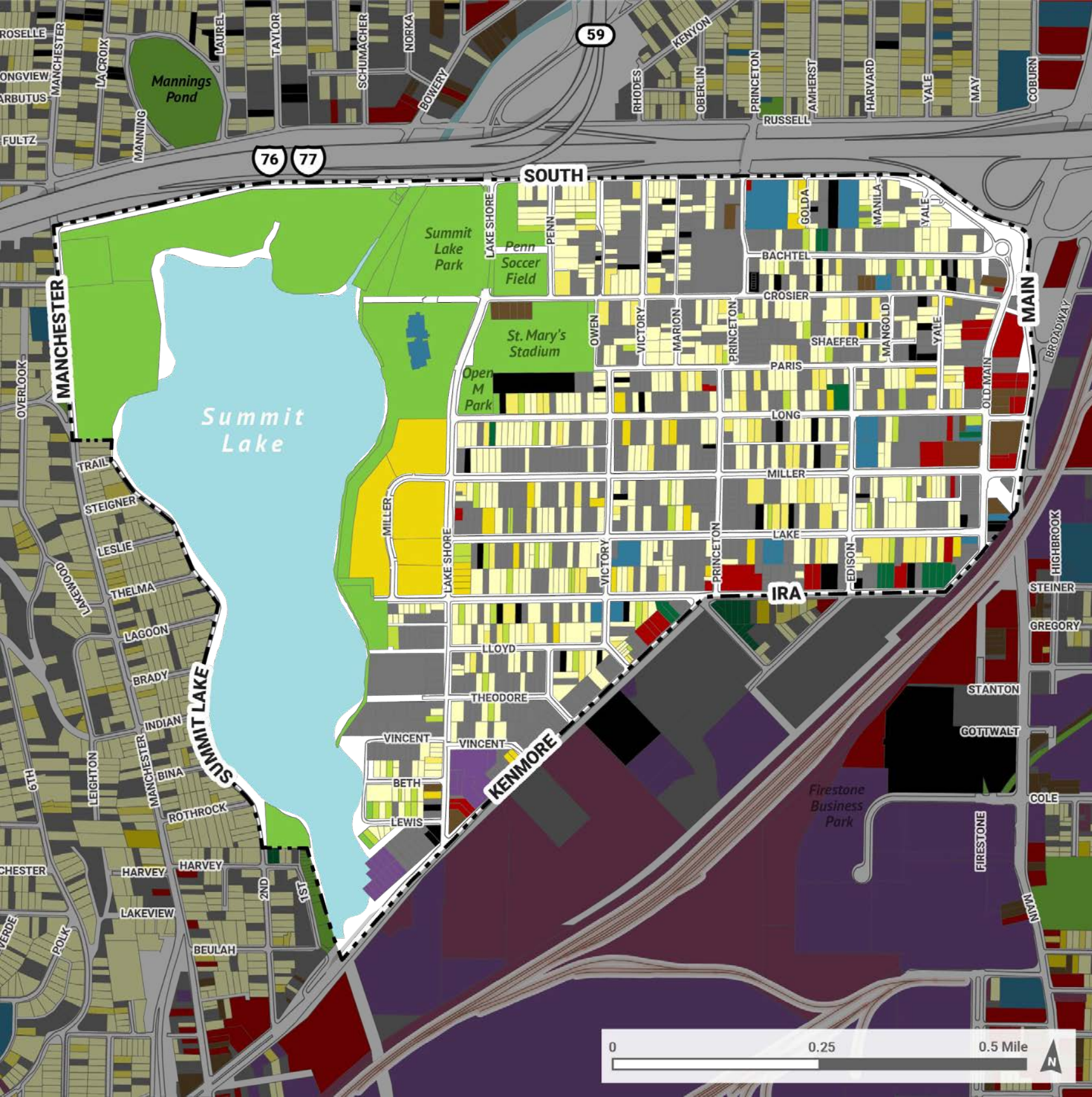
Source : Social Explorer, (U.S. Census, American Community Survey 5-year estimates, 2019)

In 1921, Summit Lake was almost fully built out with 2 schools, Summit Beach Park and commercial services



1921 Land Use

- Choice Study Area
- Current Curb Lines
- Residential
- Commercial
- Industrial
- Institutions
- Parks and Recreation

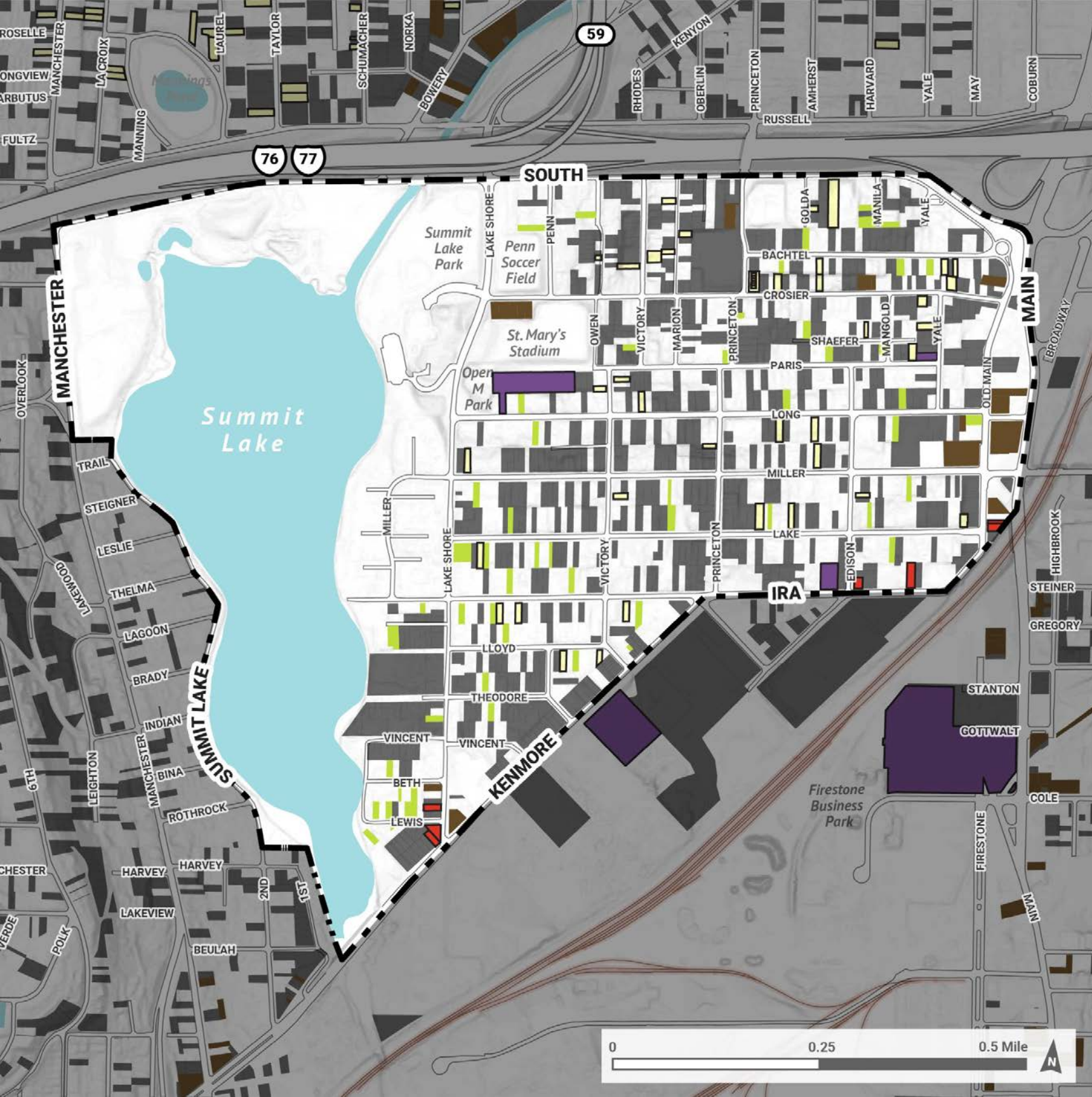


2021 Land Use

- Choice Study Area
- Single Family Residential
- Multi Family (3 units or less)
- Multi Family (4 units or more)
- Commercial
- Industrial
- Institutional
- Parks and Open Space
- Community Garden
- Side Yard
- Utility
- Parking
- Vacant Land
- Vacant Building



46% of the land is vacant



There are 83 acres of vacant land [63 football fields] & 54 vacant buildings in the Study Area [44 are residential]

2021 Vacancy

-  Choice Study Area
-  Vacant Residential Building
-  Vacant Commercial Building
-  Vacant Industrial Building
-  Vacant Land
-  Parking Lot
-  Side Yard

Houses in the neighborhood are old and large, making them difficult and costly to maintain



26%

Overall good condition



57%

Requires minor repairs



16%

Requires major repairs



1%

Appears unsafe

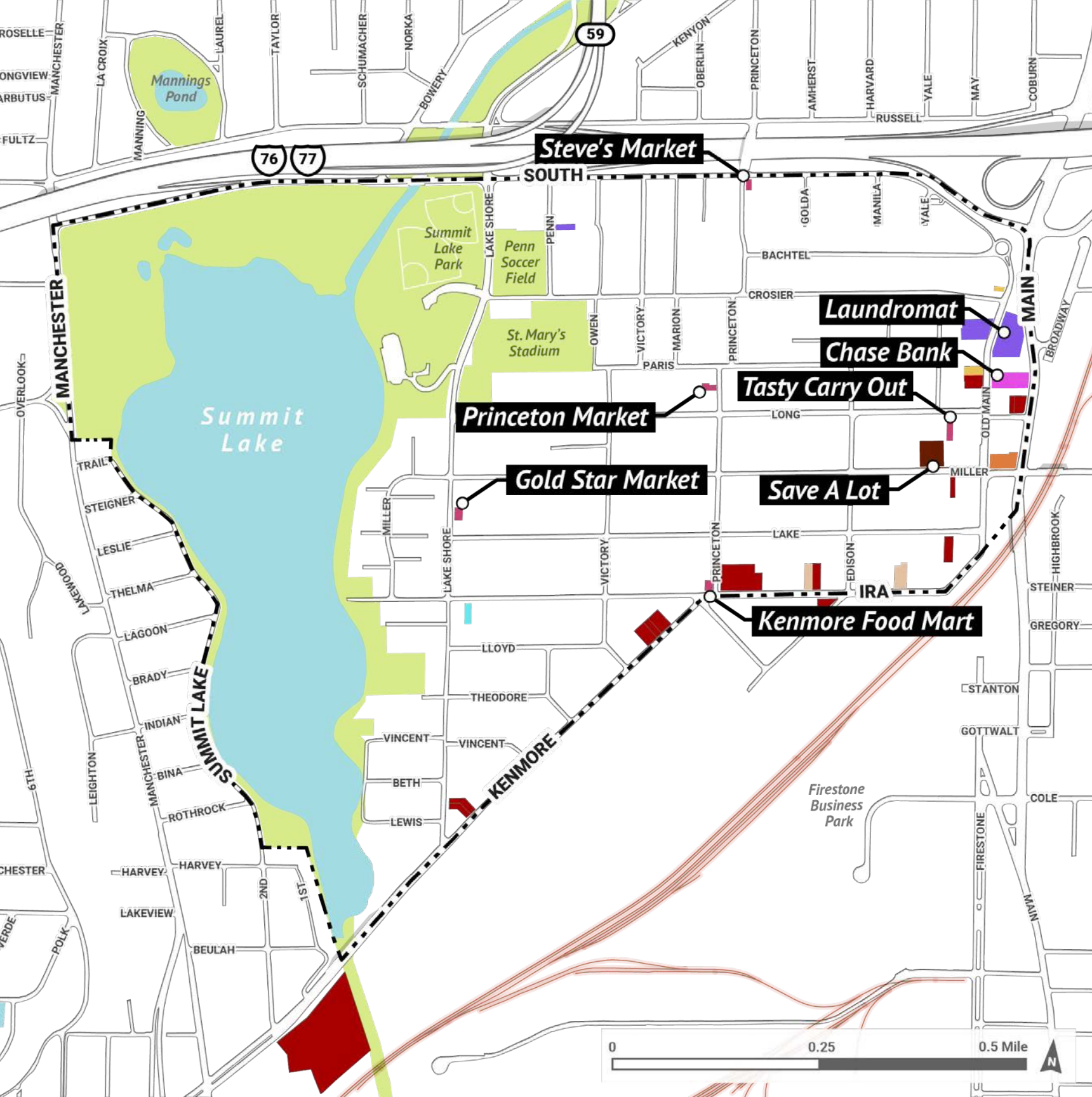
"THERE USED TO BE A PHARMACY
WHERE SAVE-A-LOT IS, A MEAT
MARKET ON MAIN, CLEANERS ON
OLD MAIN, BANKS, LOTS OF THINGS
THAT WERE ONCE HERE...."

**U DRIVE IT
AUTO SALES**
18 W. MILLER AV. AKRON, OH.
HOURS: MON. 11am: to 1:pm
330.701.1704 

**ShowCase Furniture
STORE**
NEW & USED 330-328-0530



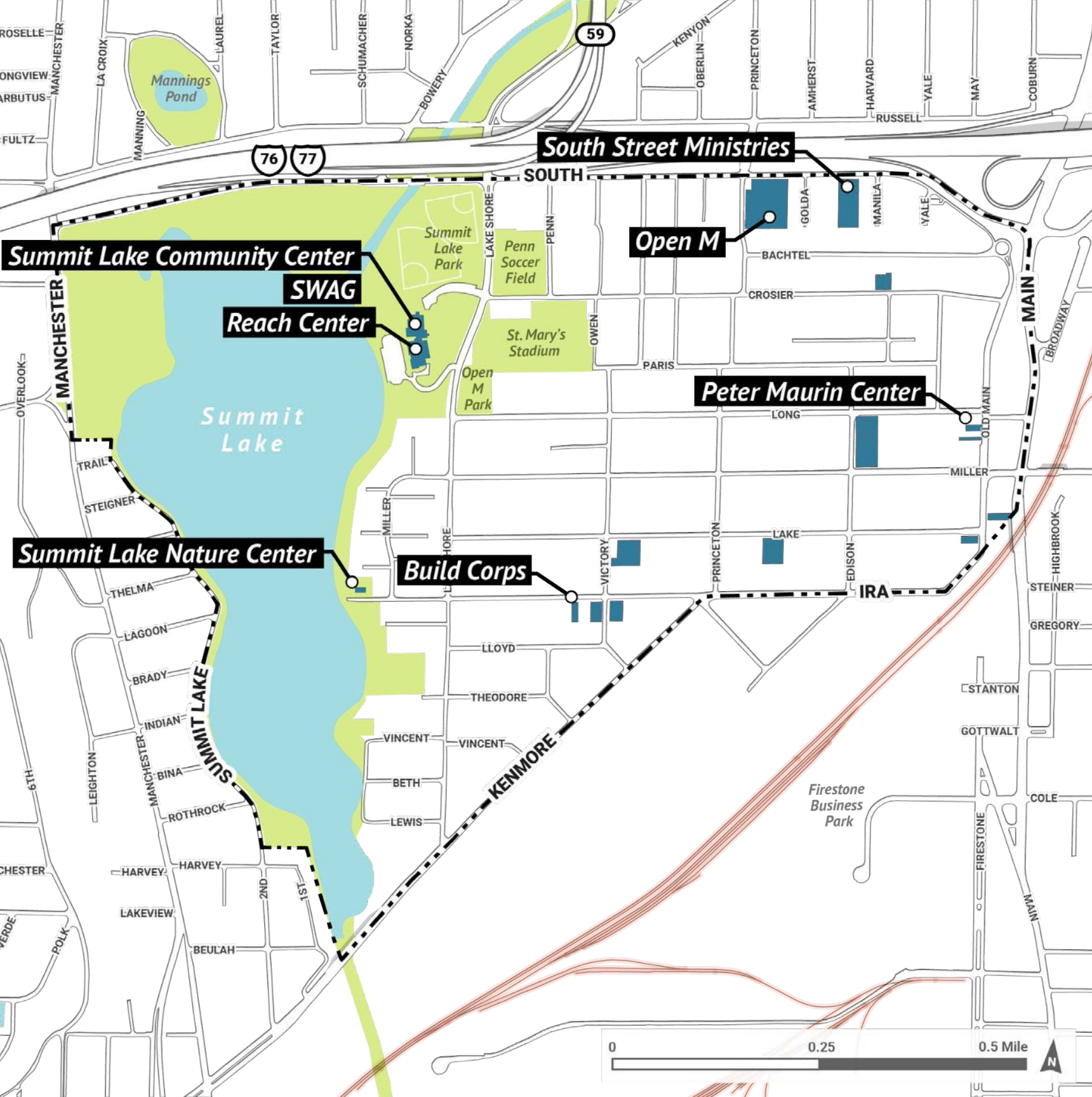
Services are limited in the neighborhood



The area is home to just one supermarket and five corner stores...

2021 Commercial Services

- Choice Study Area
- Auto-related
- Bar
- Bank
- Childcare
- Convenience Store
- Office
- Services
- Supermarket
- Other Commercial



...and services are spread out across the neighborhood.

2021 Institution

- Choice Study Area
- Religious and Social Services





Limited neighborhood access

Lakefront

Summit Lake Apartments

Most of the neighborhood is disconnected from the lake.

Lake Access

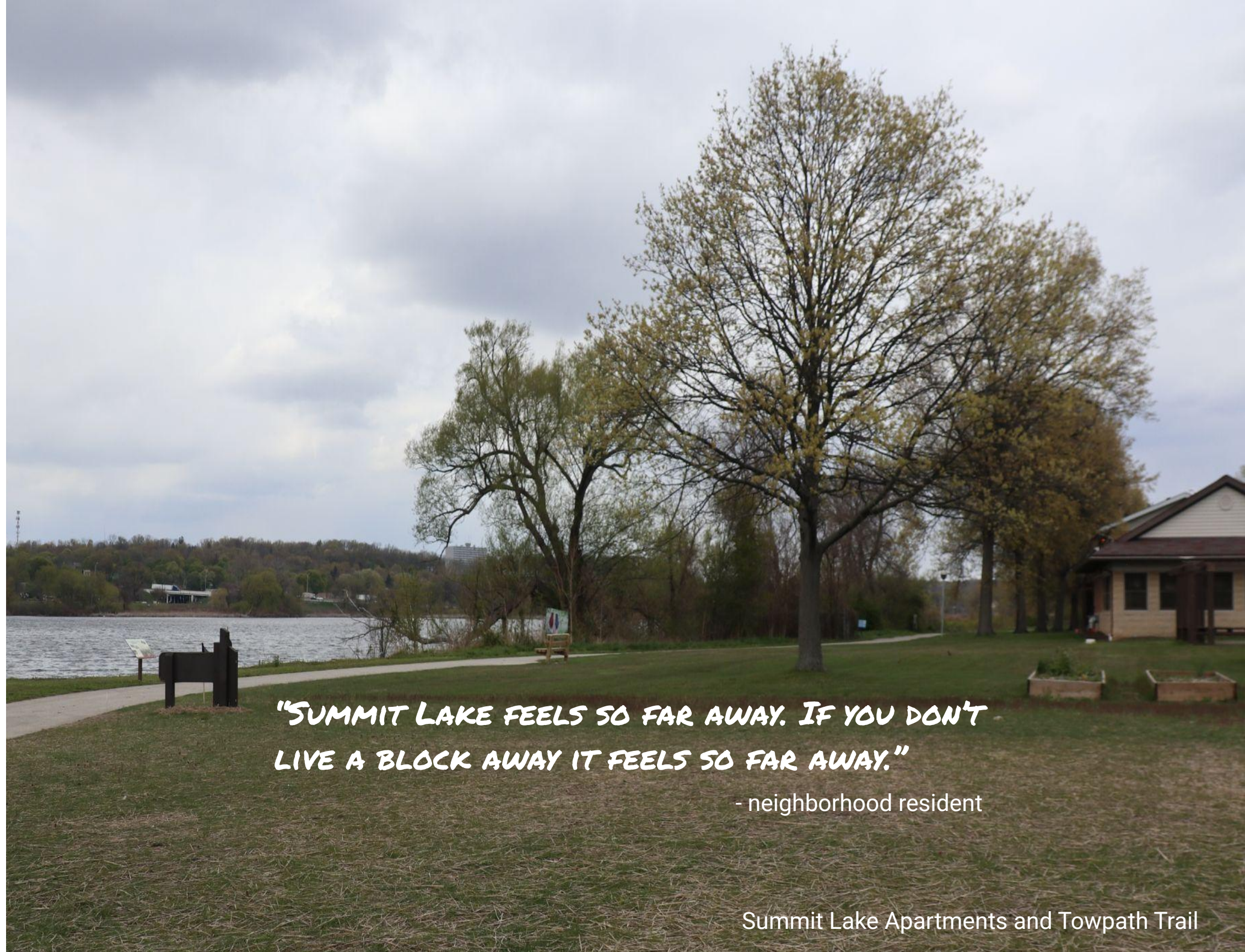
- < Lake Access Points
- Lake/River/Pond
- Parks/Open Space
- ▬ Existing Towpath Trail
- ▬ Proposed Summit Lake Trail
- Railroad

**On the west
side, streets
continue to
the lake**



Summit Lake Boulevard

**On the east
side, the
street grid
ends at Lake
Shore Blvd**



*"SUMMIT LAKE FEELS SO FAR AWAY. IF YOU DON'T
LIVE A BLOCK AWAY IT FEELS SO FAR AWAY."*

- neighborhood resident

Most sidewalks are in need of repair

"A LOT OF THE COMMUNITY WALKS IN THE STREETS, THE SIDEWALKS ARE TERRIBLE."



Positive developments are happening



Choice Next Steps



- **More interviews**
- **Completion of Summit Lake Apartments resident and Summit Lake neighborhood surveys**
- **Collection and analysis of additional community indicators**
- **Community workshop this summer**