

SUMMIT LAKE

CHOICE NEIGHBORHOODS



Neighborhood Task Force
November 18, 2021



DANIEL HORRIGAN, MAYOR

Welcome!

Today's Agenda

- **Choice Neighborhoods Update**
- **Akron Civic Commons update**
- **Land Use update**
- **Next steps**

Join us!
for the Summit Lake

Family Fall Festival

fun prizes
?



Come by when and where it is convenient for you!

Tuesday October 26th

Any time between 4:30 and 6 pm
Outside the Reach Opportunity Center
and Summit Lake Community Center

or

Thursday October 28th

Between 4:30 and 6 pm
Outside the Front Porch Fellowship
on Miller Avenue



Summit Lake on October 26



12

Spellbook
A Dozen Doughnut Incantations
For Your Spooky Celebration
RAISE A LOT OF BOUCHÉ!
12 Doughnuts
Krispy Kreme

Spellbook
A Dozen Doughnut Incantations
For Your Spooky Celebration
RAISE A LOT OF BOUCHÉ!
12 Doughnuts
Krispy Kreme

CLUTEN FREE
OREO
SINCE
Krispy Kreme

Front Porch Fellowship on Miller Avenue on October 28





2 Building Community Pride

ideas would you want to see happen in the next year?
your top three.

if there's something else you want to see

- 1. painted intersections
to slow down traffic and make it safer for walkers
- 2. murals
celebrating Summit Lake and its history / residents
- 3. welcome sign
or marker at the main entrance(s) to the neighborhood
- 4. neighborhood cleanup
addressing trash litter and
- 5. pop-up events
place pop-ups like and
- 6. exterior home improvements
improve exterior appearance of the neighborhood
- 7. neighborhood events





Halloween Parade

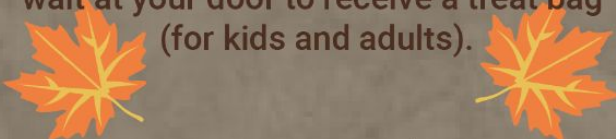


Wednesday,
October 27th,

Beginning at 5pm

The parade will start at Brutus parking lot.

Summit Lake staff will parade from door to door, please come outside and wait at your door to receive a treat bag (for kids and adults).



Costumes Welcome!

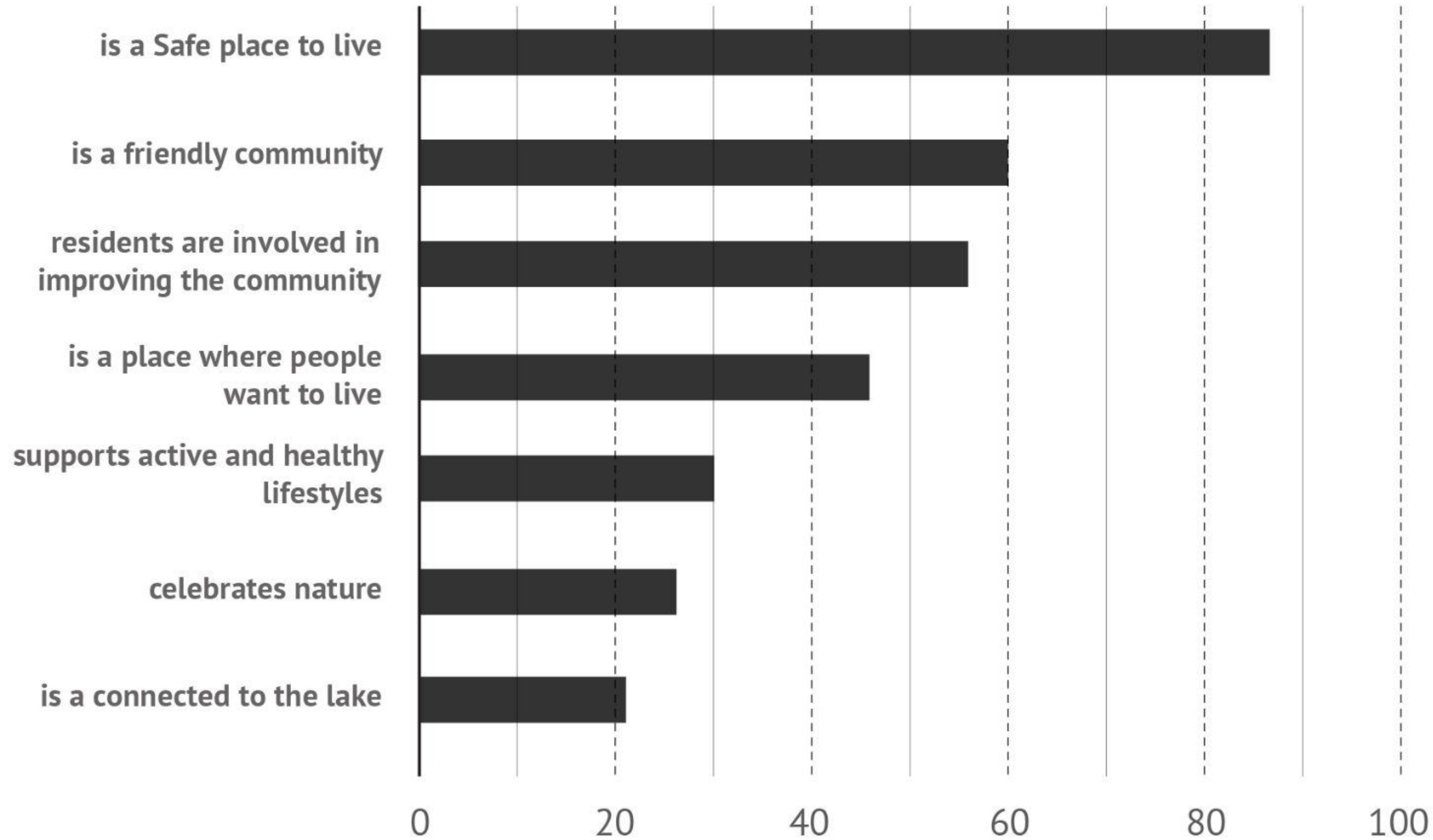
SUMMIT LAKE
CHOICE NEIGHBORHOODS



VISION

Which descriptions are most important to you? - (125 Responses)

Summit Lake ...



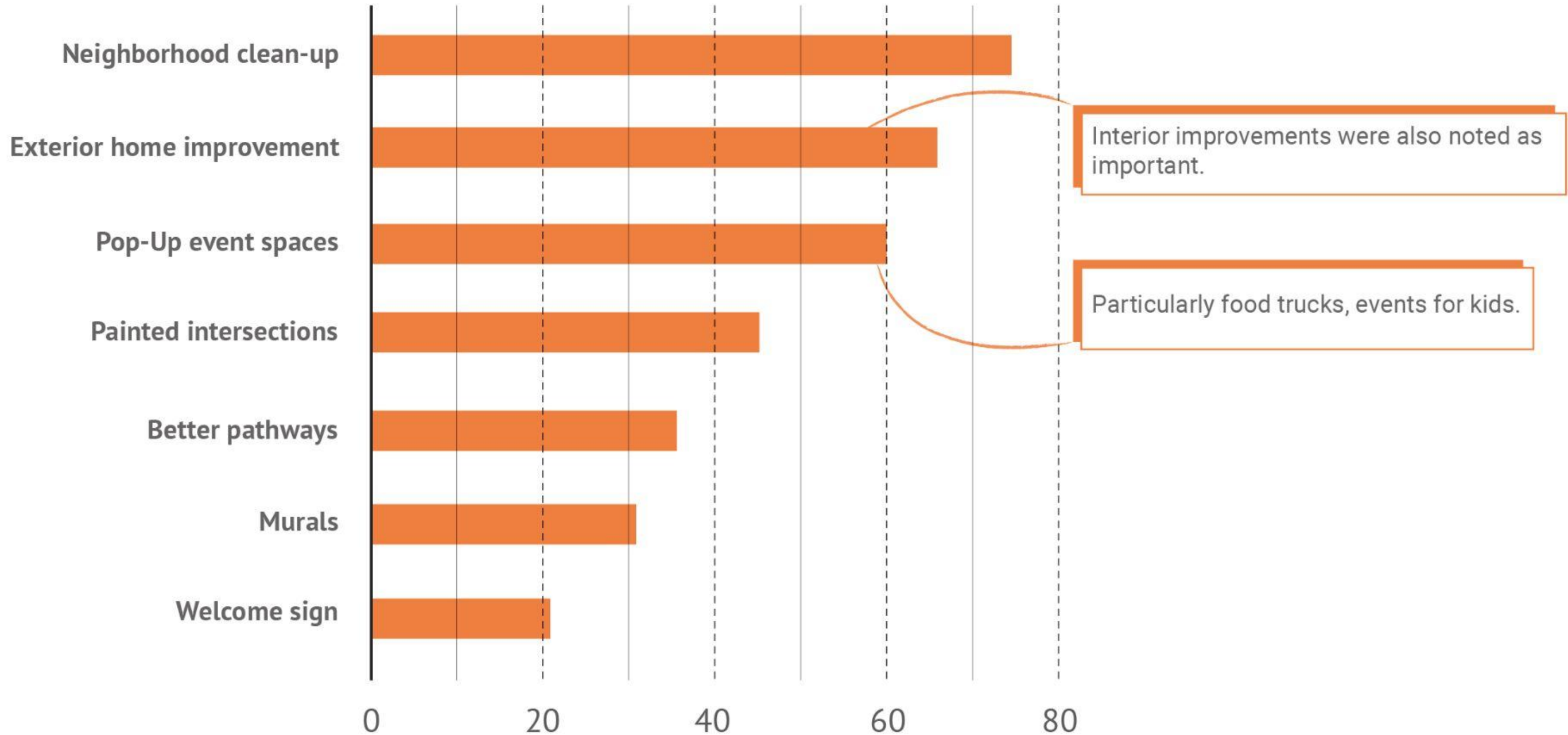
A Draft Vision

Summit Lake is a safe and thriving community with quality housing, local businesses, spaces that support active and healthy lifestyles, and residents who take pride in their community and work together to improve the neighborhood.

BUILDING COMMUNITY PRIDE

Which ideas would you want to see happen in the next year? - (119 Responses)

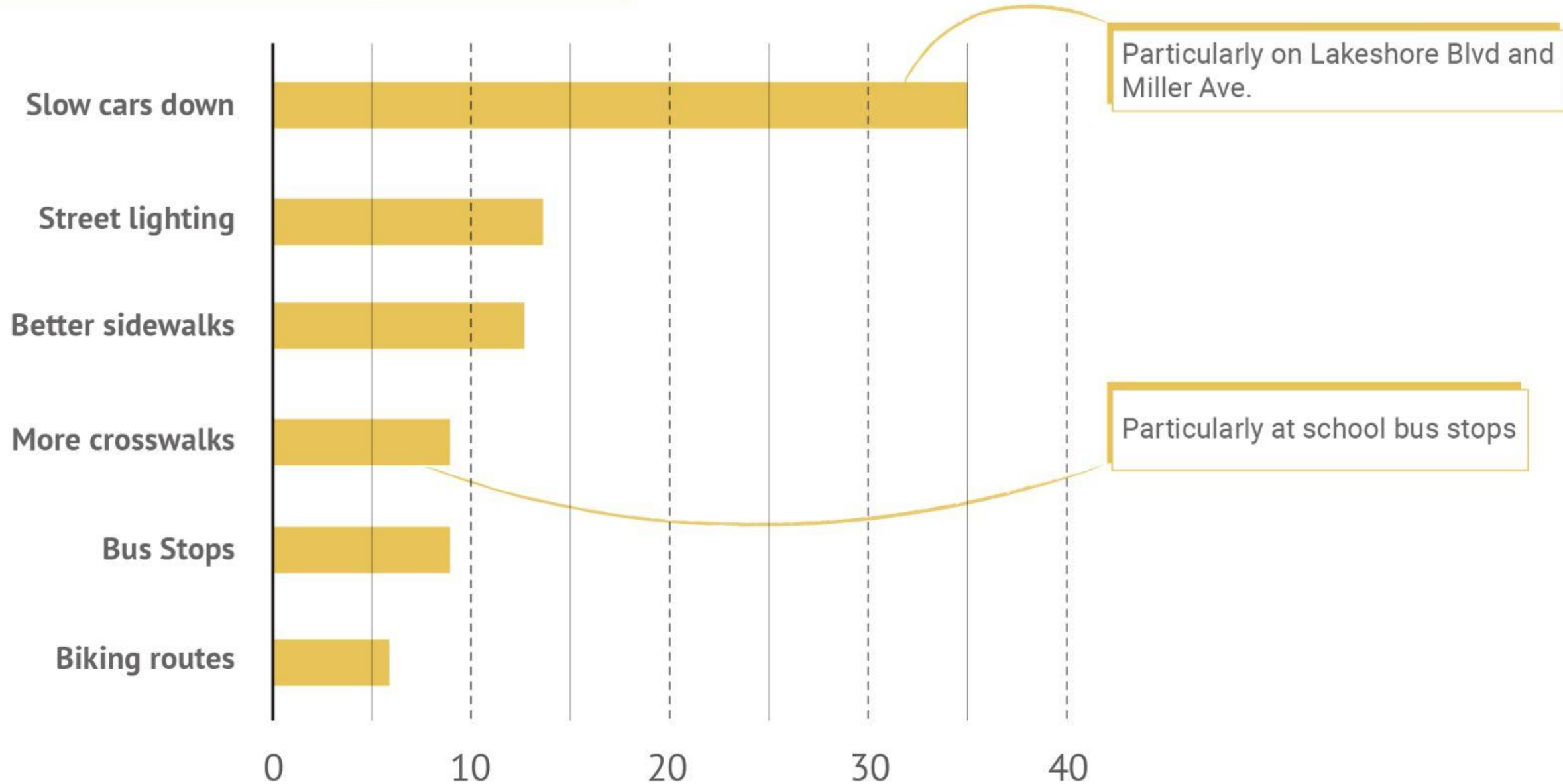
Choose your top three



SAFER STREETS

Which one is most important to you ? - (63 Responses)

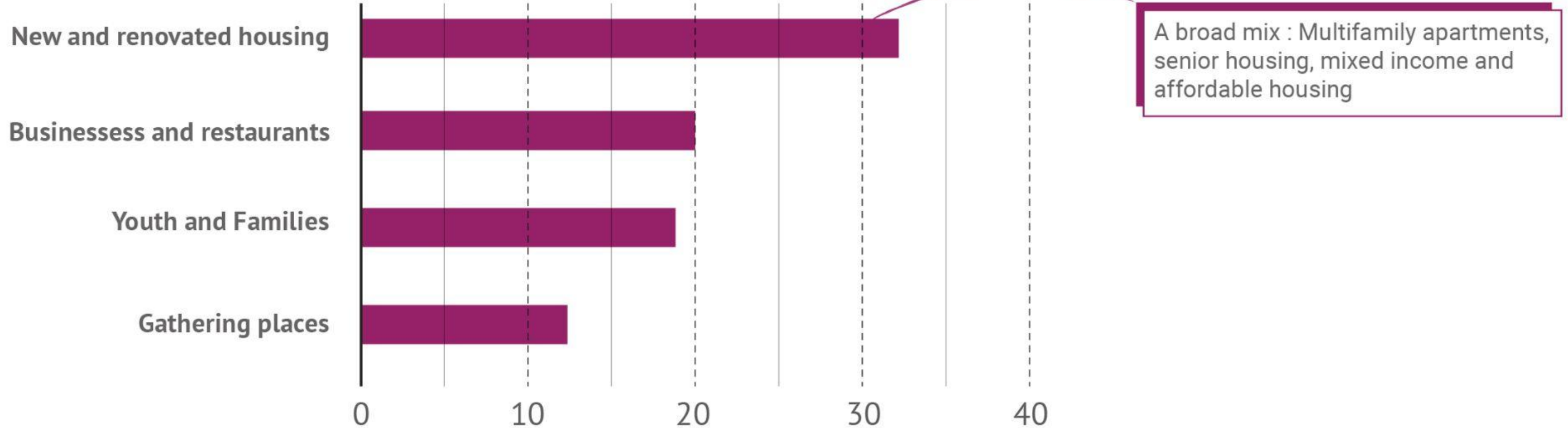
Which street or intersection would you target first ?



THRIVING COMMUNITY

Which is your top priority? - (69 Responses)

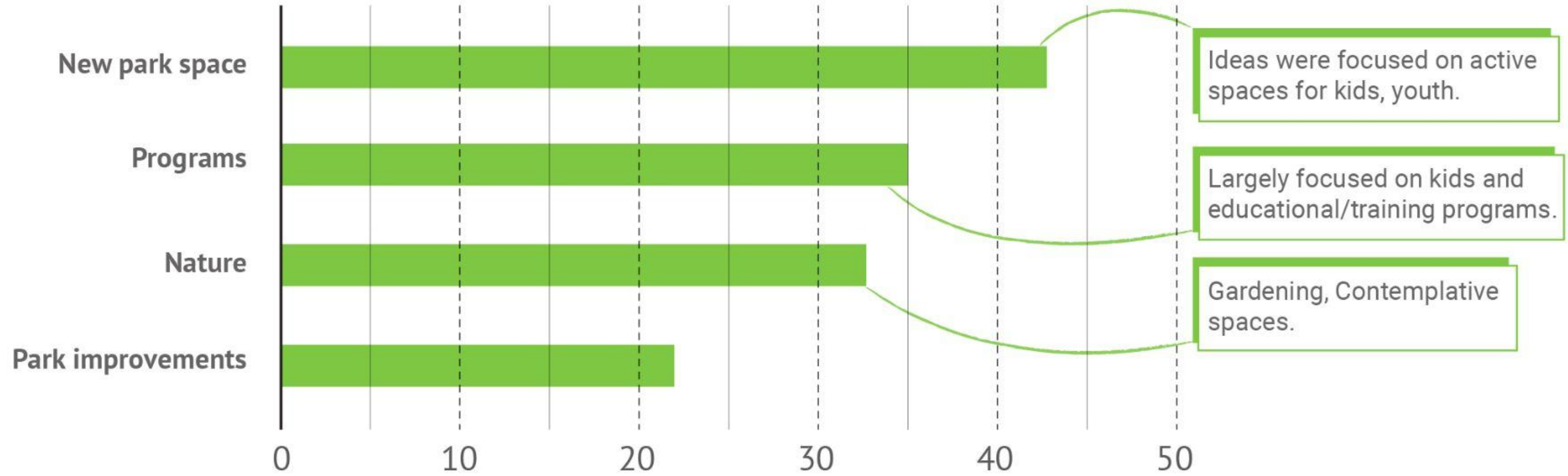
Give us an example of what you specifically want to see



PARKS AND OPEN SPACE

Which is your top priority? - (114 Responses)

Give us an example of what you specifically want to see



Akron Civic Commons Update

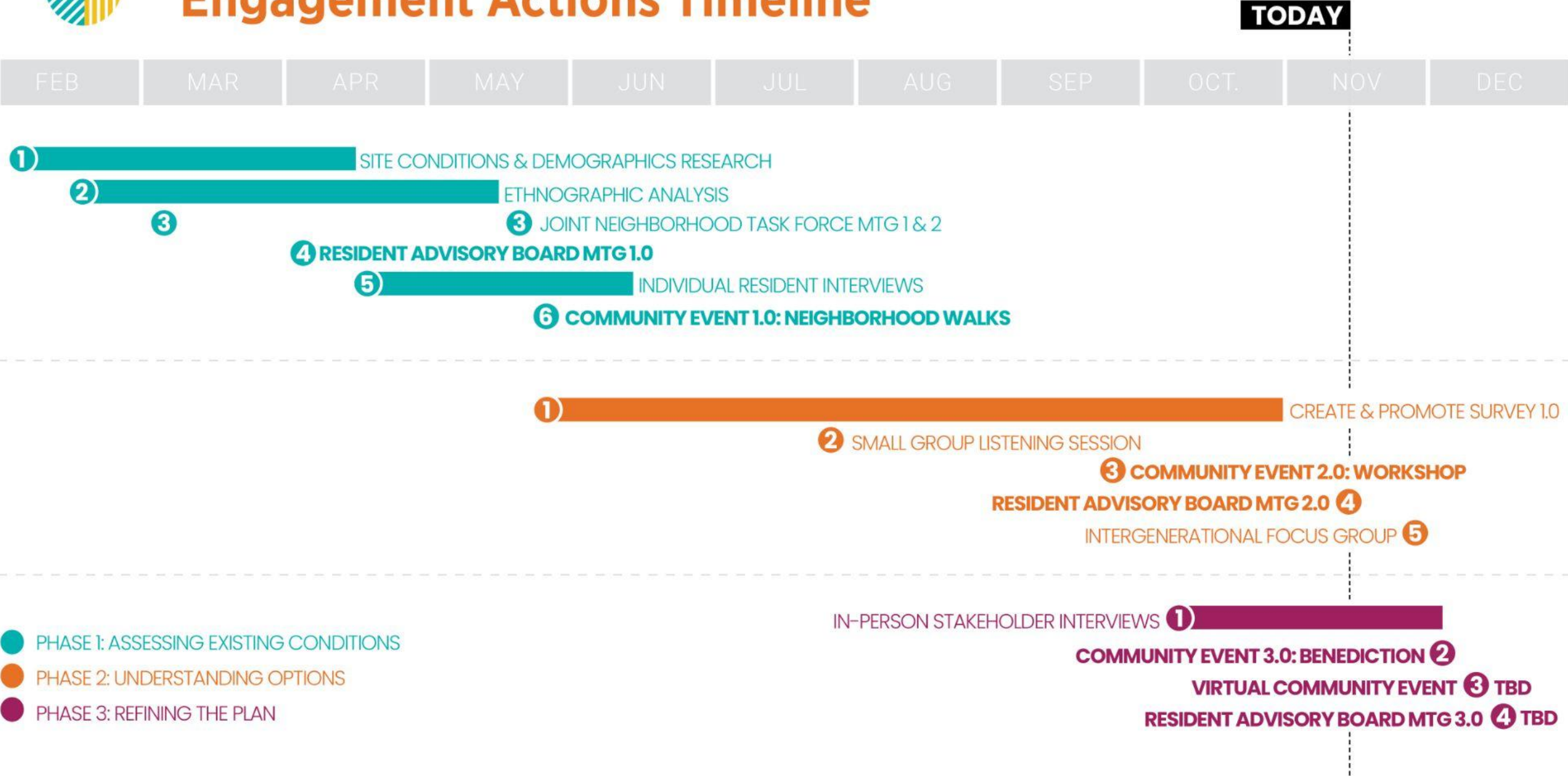
- **City of Akron Summit Lake Vision Plan American Rescue Plan Act funding announcement on November 17**



Land Use Plan Activities to Date

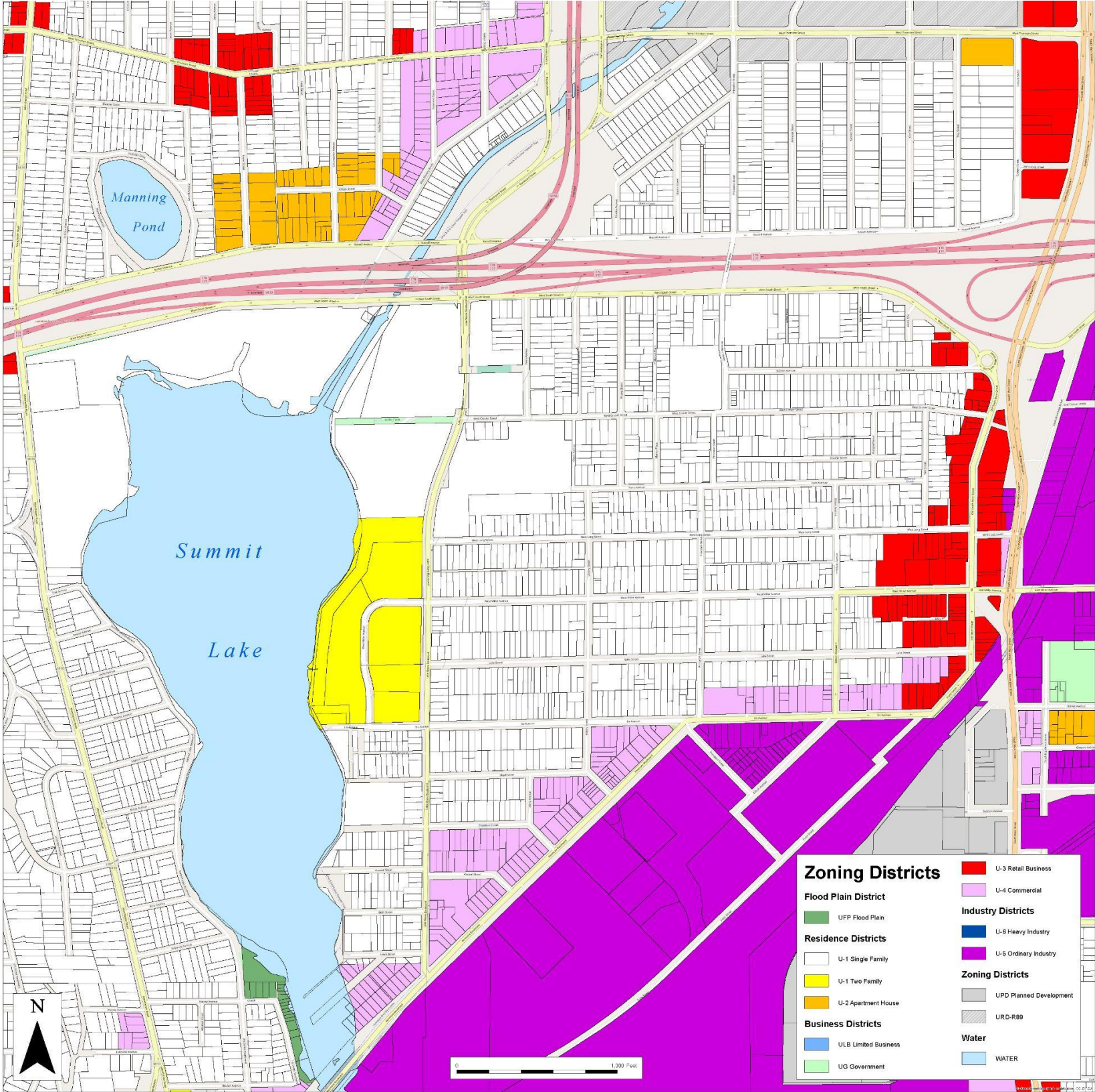


Overview of Our Summit Lake Engagement Actions Timeline

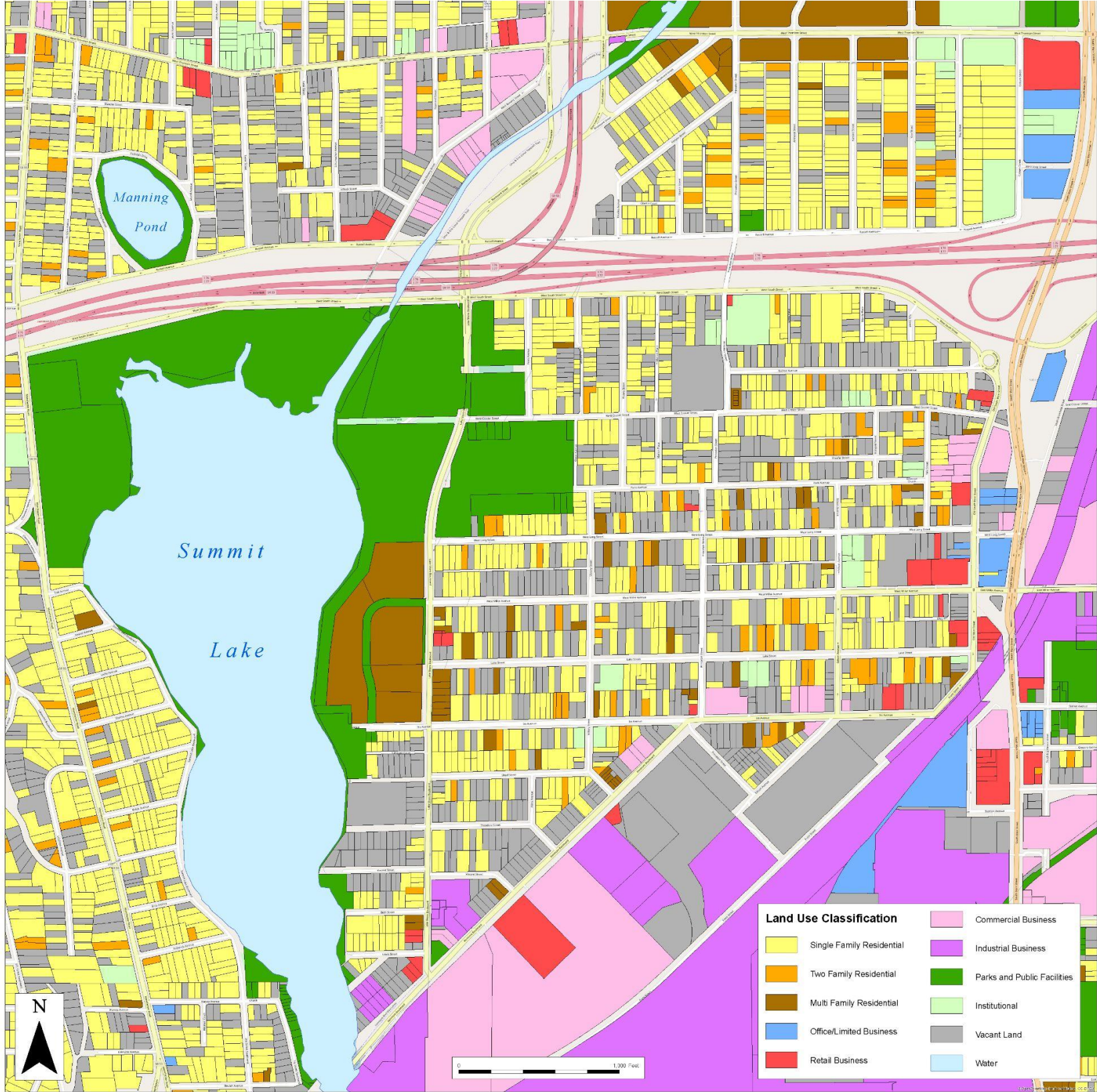


- PHASE 1: ASSESSING EXISTING CONDITIONS
- PHASE 2: UNDERSTANDING OPTIONS
- PHASE 3: REFINING THE PLAN

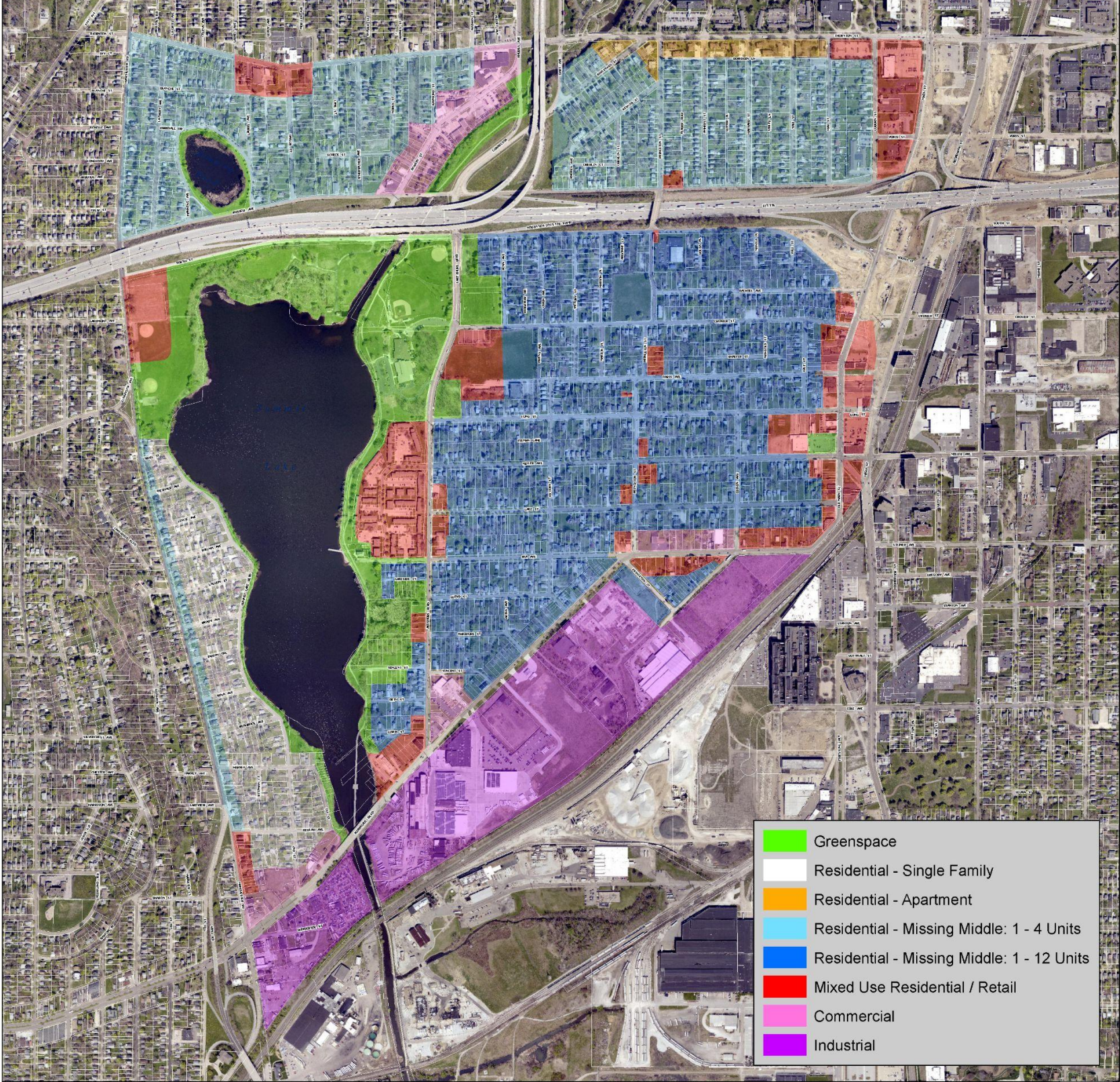
Summit Lake Existing Zoning



Summit Lake Existing Land Use



Summit Lake Draft Land Use



Greenspace



Typical Uses

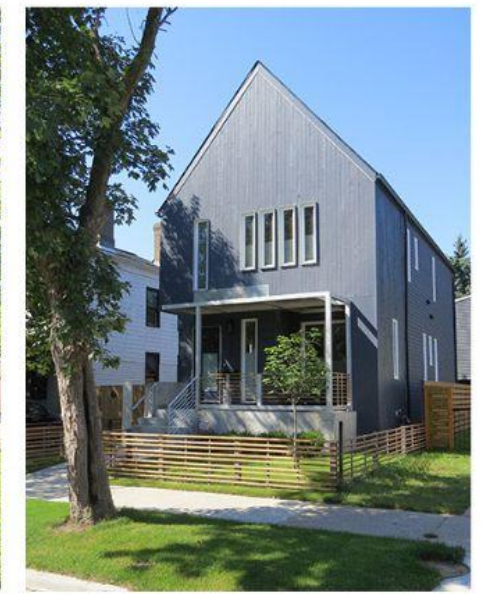
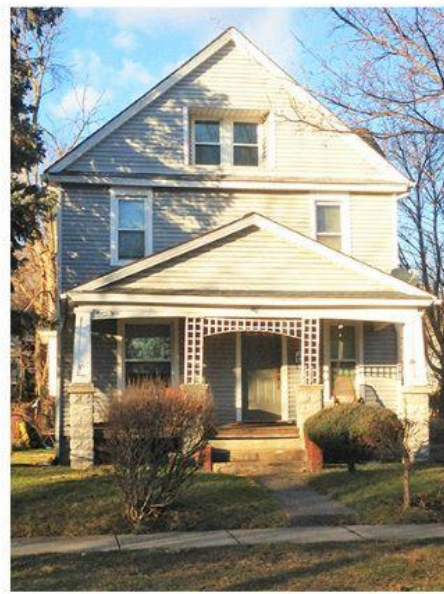
- Parks
- Playgrounds
- Athletic fields
- Neighborhood pathways
- Community gardens

Characteristics

- Accessibility for a range of users
- Provides space for social interaction
- Access to nature has wellness benefits



Single Family



Considerations

- Detached dwelling for one family
- Traditional neighborhood type
- Can be oversized for small household
- Larger yard, but more upkeep

Required Characteristics

- Two story height maximum
- Windows facing the street
- Front porch
- Garage set back 15 feet minimum



Missing Middle 1 - 4 Units



1 - 4 Dwelling Units per Building

- Single Family
- Doubles
- Townhouses
- Small Multi-family

Required Characteristics

- Two story height maximum
- Windows facing the street
- Front porch or stoop
- Garages set back 15 feet minimum



Missing Middle 1 - 12 Units



1 - 12 Dwelling Units per Building

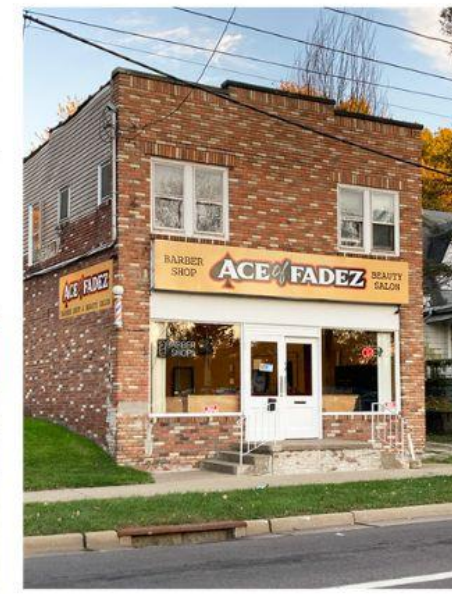
- Single Family
- Doubles
- Cottage Courts
- Townhouses
- Multi-family

Required Characteristics

- Two story height maximum
- Windows facing the street
- Front porch or stoop
- Parking in the back



Mixed-Use Residential & Retail



Mixed-Use Building Types

- Residential with Small-scale Retail
- Restaurant / Cafe / Coffee Shop
- Office / Maker Space
- Corner Store / Barber / Hair Salon
- Multi-family Apartment

Required Characteristics

- Four story height maximum
- Shallow front setback
- Storefront windows facing the street
- Parking in the back



Commercial



Typical Uses

- Automotive / parts shops
- Paint / coatings
- Repair shops
- Machine shop

Characteristics

- Business uses w/ less impact on surrounding area than industrial
- Involve interaction w/ the public
- Visitor parking requirements



Industrial



Typical Uses

- Fabrication
- Manufacturing
- Warehouses
- Shipping / Logistics

Characteristics

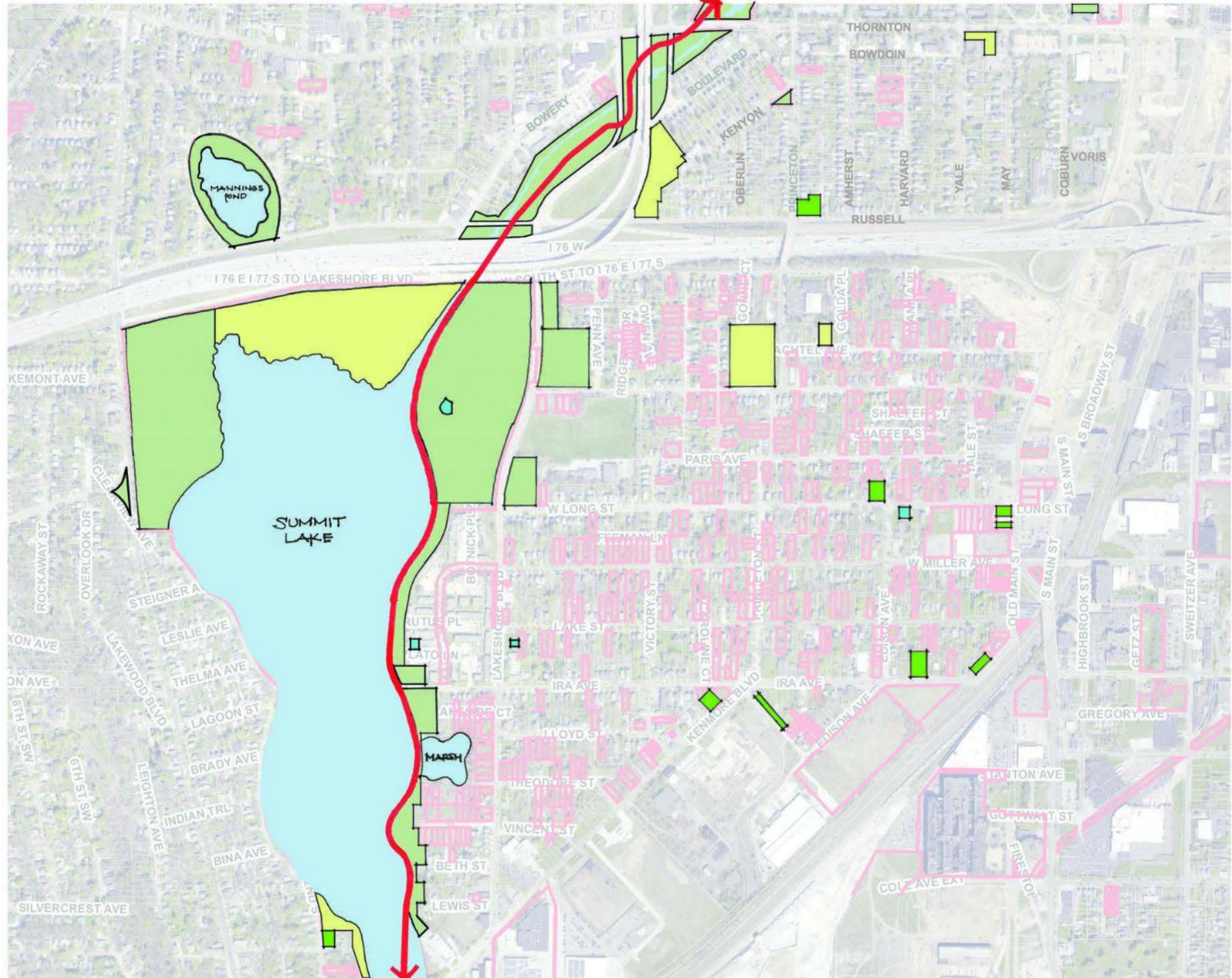
- Business uses w/ impacts on surrounding areas
- Truck traffic
- Shipping bays
- Employee parking requirements



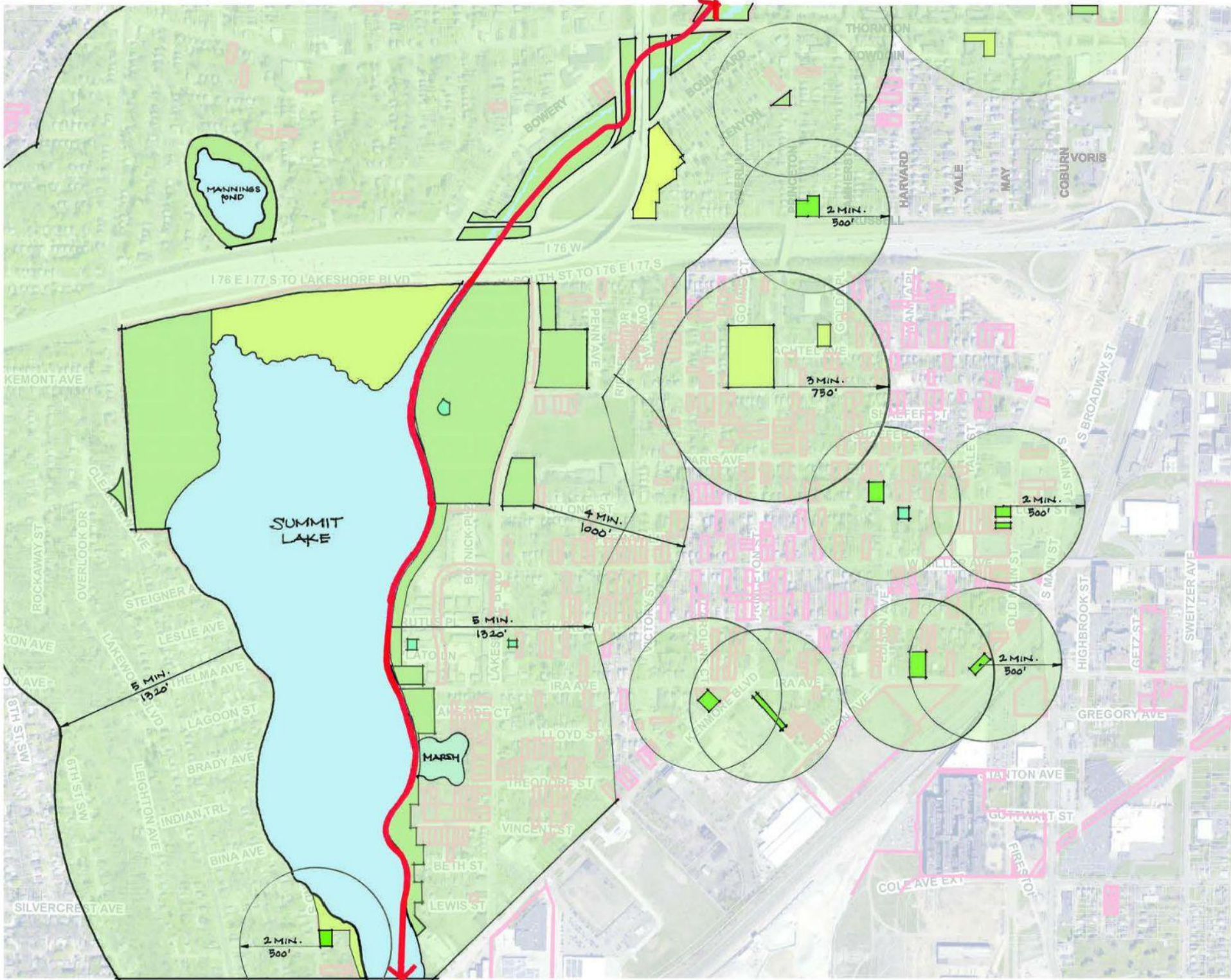
SUMMIT LAKE EXISTING GREENSPACE

DRAWING KEY









- TOWPATH TRAIL
- EXISTING PASSIVE GREENSPACE
- EXISTING PARKS
- PROPOSED NEW GREENSPACE
- COMMUNITY GARDEN
- PLAYGROUND
- GREENWAY CONNECTORS
- GREENSPACE WALKSHEDS



**SUMMIT LAKE
EXISTING GREENSPACE
WALKSHEDS / ACCESS**

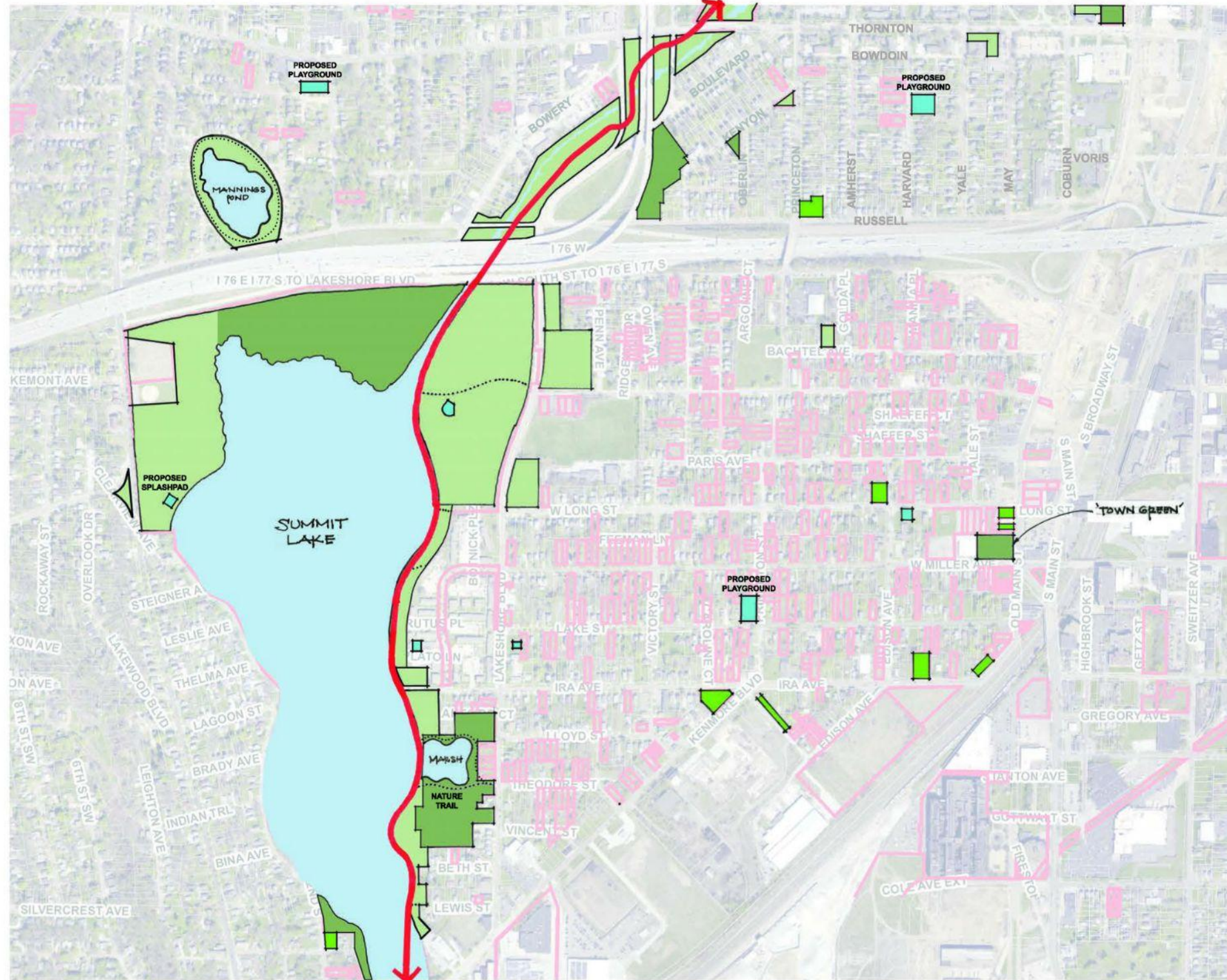


DRAWING KEY

	TOWPATH TRAIL
	EXISTING PASSIVE GREENSPACE
	EXISTING PARKS
	PROPOSED NEW GREENSPACE
	COMMUNITY GARDEN
	PLAYGROUND
	GREENWAY CONNECTORS
	GREENSPACE WALKSHEDS



SUMMIT LAKE PROPOSED GREENSPACE

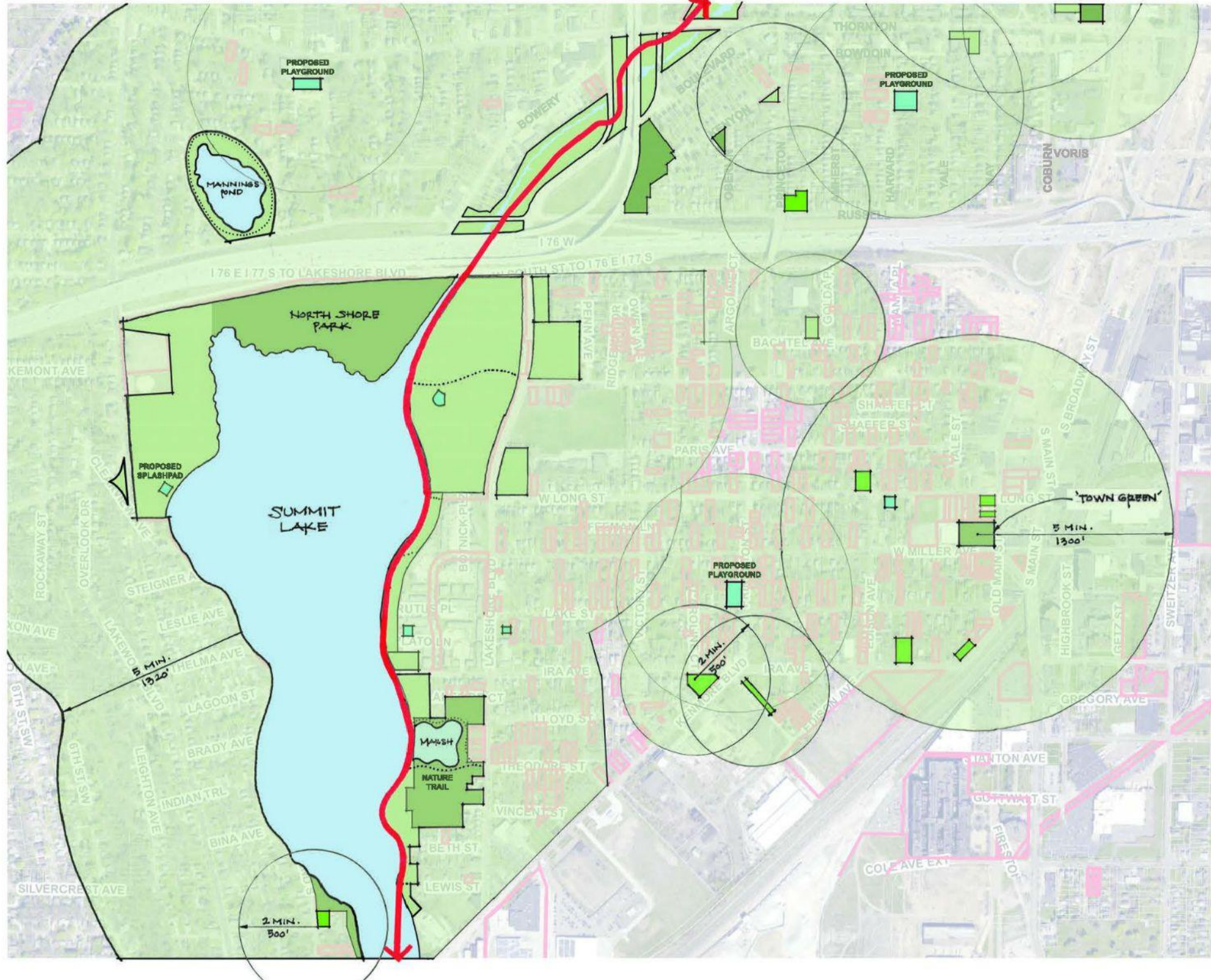


DRAWING KEY

	TOWPATH TRAIL
	EXISTING PASSIVE GREENSPACE
	EXISTING PARKS
	PROPOSED NEW GREENSPACE
	COMMUNITY GARDEN
	PLAYGROUND
	GREENWAY CONNECTORS
	GREENSPACE WALKSHEDS



**SUMMIT LAKE
PROPOSED GREENSPACE
WALKSHEDS / ACCESS**



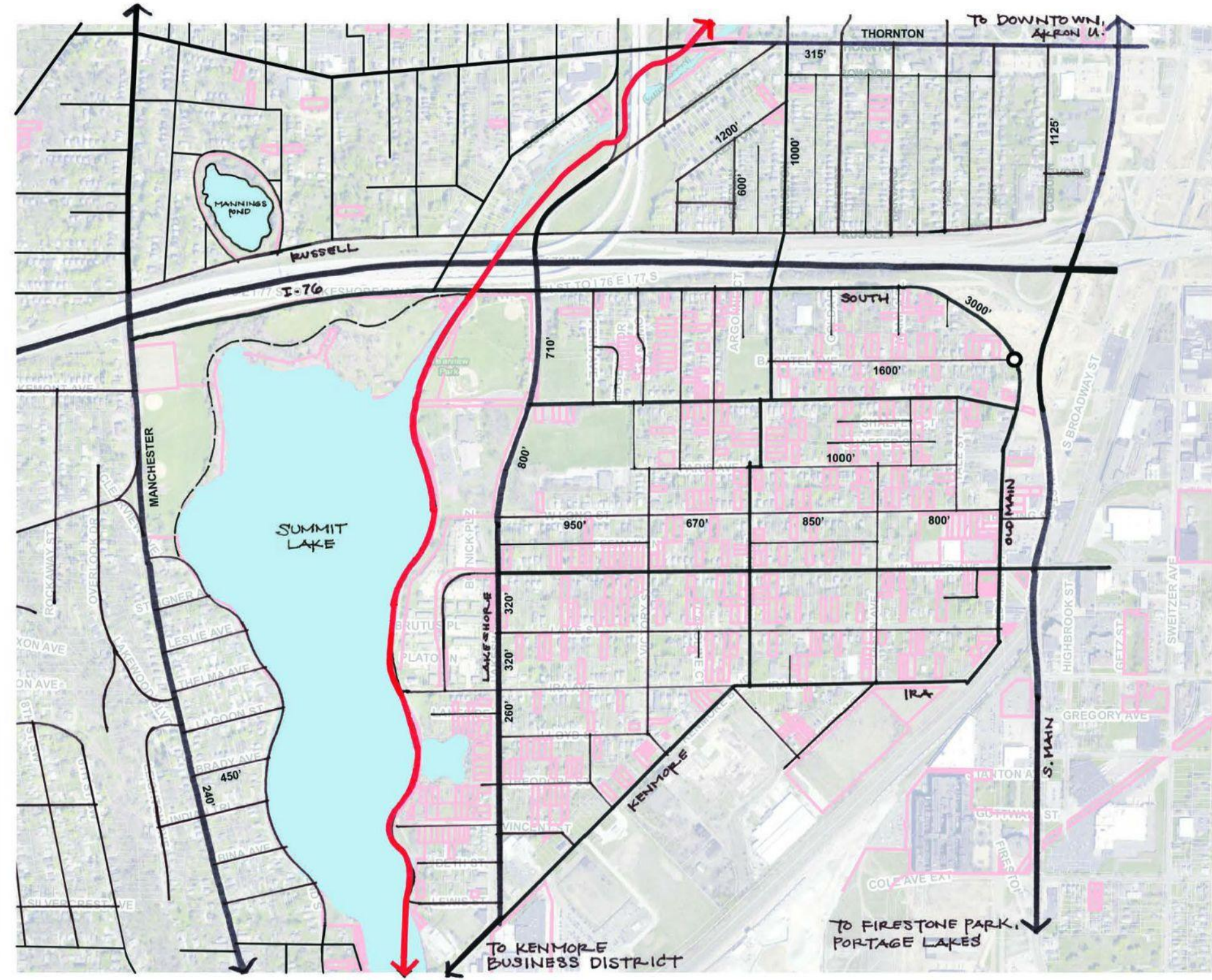
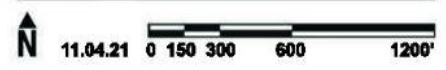
DRAWING KEY

	TOWPATH TRAIL
	EXISTING PASSIVE GREENSPACE
	EXISTING PARKS
	PROPOSED NEW GREENSPACE
	COMMUNITY GARDEN
	PLAYGROUND
	GREENWAY CONNECTORS
	GREENSPACE WALKSHEDS



**SUMMIT LAKE
EXISTING CIRCULATION
BLOCK LENGTHS**

- DRAWING KEY**
- CITY OF AKRON PROPERTY
 - STREETS, ALLEYS, PATHS
 - TOWPATH TRAIL
 - SUMMIT LAKE LOOP TRAIL
 - CONVERT 1-WAY TO 2-WAY & ADD BIKE LANES
 - ADD BIKE LANES
 - ADD PED / BIKE CONNECTOR - ON CITY LAND
 - ADD PED / BIKE CONNECTOR - ACQUIRE LAND
 - ADD CROSSWALKS



**SUMMIT LAKE
POSSIBLE GREENWAYS
AS PEDESTRIAN / BIKE CONNECTORS**





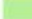




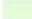
DRAWING KEY

	TOWPATH TRAIL
	EXISTING PASSIVE GREENSPACE
	EXISTING PARKS
	PROPOSED NEW GREENSPACE
	COMMUNITY GARDEN
	PLAYGROUND
	GREENWAY CONNECTORS
	GREENSPACE WALKSHEDS



**SUMMIT LAKE
POSSIBLE GREENWAYS
AS PEDESTRIAN / BIKE CONNECTORS**

DRAWING KEY

	TOWPATH TRAIL
	EXISTING PASSIVE GREENSPACE
	EXISTING PARKS
	PROPOSED NEW GREENSPACE
	COMMUNITY GARDEN
	PLAYGROUND
	GREENWAY CONNECTORS
	GREENSPACE WALKSHEDS



Land Use Plan Upcoming Event



OUR SUMMIT LAKE

**ALL-AMERICA CITY
AKRON**
181 1995 2008

FINAL COMMUNITY EVENT

Tuesday December 7th, 2021
6:00PM - 7:30PM
REACH Opportunity Center
390 W Crosier Street



RSVP at: OurSummitLake.com

Next Steps

- **Choice Neighborhoods**
 - **People - focus groups with residents and service providers in January/February**
 - **Housing - special discussion on draft housing market study on Nov 30**
 - **Neighborhood - review of land use report and next steps**
 - **First HUD Choice deliverable - annotated outline - due Dec 15**

Next Steps

- **Land Use**
 - **Intergenerational focus group Nov TBD**
 - **Land Use resident advisory board Nov 18**
 - **Land Use community meeting Dec 7**